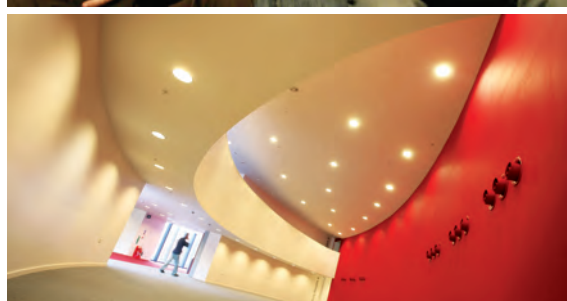


# Politics



'Research here has a pedigree of its own...'

*The Virgin Alternative Guide to British Universities*



### The University of Manchester...

- carries out research in a wider range of academic areas than any other UK university
- attracted around £266 million in research funding in the last year
- has more than 5,800 academic and research staff
- has completed the largest and most ambitious buildings and investment programme ever seen in British higher education – more than £400 million to date and a further £250 million by 2015
- has one of the largest and best resourced academic libraries in the country
- has a careers service that has been voted the best in the UK for five consecutive years
- is the most targeted university by the UK's top 100 graduate employers
- enjoys the best of both worlds: city life and campus community

There has never been a better time to be part of The University of Manchester. Choose to be a postgraduate student here and you can join us in achieving our ambitious goals for the future.

The University of Manchester **2**

Politics at Manchester **4**

facilities and support **30**

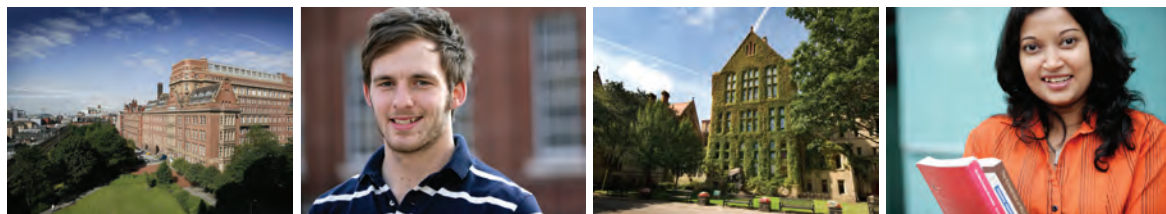
campus map **32**

city map **34**

how to apply **35**

contact details **35**

# The University of Manchester



Come and join one of Britain's most famous and forward-thinking universities, with a rich heritage stretching back 180 years and an exciting agenda for the future...

The birth of the computer, the splitting of the atom, the founding principles of modern economics – these and many more world-altering innovations have their roots at The University of Manchester. Today, our international research centres produce answers to global problems that truly change lives.

Famous for cutting-edge innovation and based in one of the world's most exciting student cities, The University of Manchester offers you excellent prospects. Our aim to become one of the world's top 25 universities – attracting the best tutors, researchers, students and reputation – is backed by British higher education's most ambitious capital building programme, an investment of more than £650 million by 2015.

## Research, discovery and innovation

The 2008 Research Assessment Exercise placed us third in the UK in terms of "research power" and assessed virtually all of our research as reaching international or national standards of excellence. We research in a wider range of areas than any other UK university, and are continuing to increase our number of first-rate professorships, improve our strong links to industry and public services, and invest in world-class facilities.

Whether studying for a taught or research postgraduate degree, you'll be directly involved with groundbreaking research, encouraged to adopt innovative approaches and discover interdisciplinary ways of working that open up exciting new areas of discovery.

## Turning knowledge into enterprise

Your postgraduate work could contribute towards business and economic development outside academia. Manchester has an impressive track record of turning ideas into commercial reality, attracting

world-class academics by providing a dynamic, first-class support system for them to participate and succeed in commercialisation projects. More than 100 'spin-out' companies have been created in recent years based on our current research.

## Career opportunities

As a Manchester graduate you will be in good company: 23 Nobel Prize winners have worked or studied here, and our alumni have an impressive track record of becoming leaders in their fields, from philosopher Wittgenstein to women's rights campaigner Christabel Pankhurst, and from Sir Terry Leahy, Chief Executive of Tesco, to George Richards, President of Trinidad and Tobago.

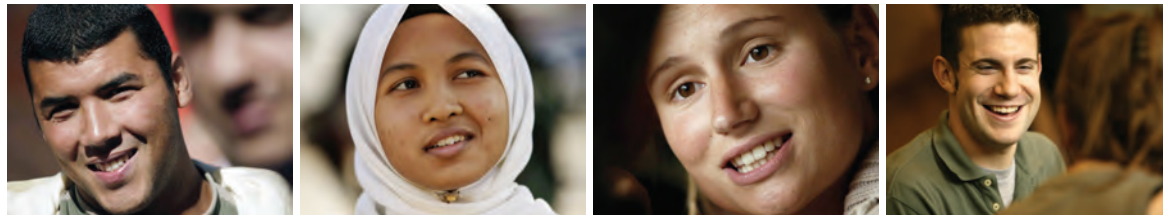
More than 4,000 recruiters each year from countries around the globe target our graduates. Consistently voted the best in the UK by employers, our Careers Service offers diverse practical, innovative services and events – many exclusively for postgraduates – to make you more employable.

## Cosmopolitan campus

One of the UK's largest and best-resourced academic libraries, premier IT services and extensive student support services are all on our campus, along with impressive sports facilities, restaurants, bars, cafés and a shopping centre. Campus-based cultural attractions include The Manchester Museum, Whitworth Art Gallery and Contact Theatre, with the University's Jodrell Bank Observatory based further afield in Macclesfield. Europe's largest Students' Union provides excellent support services, hundreds of active student societies and four live venues, including the famous Academy, attracting the best big name and upcoming bands.



# Politics at Manchester



## Why choose to study Politics at Manchester?

### Wide range of subject areas

With one of the largest groupings of politics staff in Europe, we enable you to choose from a truly comprehensive and diverse range of subject areas.

### Taught by internationally renowned academics

Our University has a reputation for excellence in teaching and research, and you will be taught by some of the world's leading scholars.

### Excellent resources

Our University library is one of the best research libraries in the country, with a comprehensive range of journals; it also gives you access to the internationally renowned John Rylands Library and the Manchester Central Reference Library. Facilities for quantitative analysis are provided by the University's IT Services.

### Situated in the great European city of Manchester

The birthplace of modern capitalism and the industrial revolution, Manchester is a hugely popular and vibrant city. Traditional architecture represents a high point of Victorian achievement, while the modern city is a major centre of business, finance, manufacturing and the creative industries. With several universities located within the boundaries of the metropolis, it caters to a very large student population. Manchester's cosmopolitan atmosphere draws visitors from across the world, while its cultural and sporting life is internationally renowned.

### Funding available

Politics at Manchester offers a range of competitive studentships, scholarships and bursaries for both home and overseas students. For full details, see our section below on fees and funding, or visit our website:

[www.manchester.ac.uk/socialsciences/postgraduate/research/funding](http://www.manchester.ac.uk/socialsciences/postgraduate/research/funding)

### The Graduate Centre in Politics

Welcome to one of Europe's top centres for outstanding research and teaching. The discipline area of Politics is part of the School of Social Sciences. This is a very exciting time for us; in 2007, the School of Social Sciences moved to our new, purpose-built accommodation in the £30 million Arthur Lewis Building – a statement of confidence in the future of social sciences here at Manchester.

We bring together one of the largest groupings of politics staff throughout the European Union, covering almost all areas of the discipline. Our highly developed research culture emphasises excellence, originality and the dissemination of knowledge. We have a long tradition of being at the forefront of our politics sub-disciplines: our origins go back to the late 1940s, with the emergence of the Department of Government. This grew to be the leading politics department in the UK, under the leadership of founding Professor WJM Mackenzie and his successors.

We have maintained these high standards to the present day. In the 2008 Research Assessment Exercise, Politics performed very well, with 50% of our research activity identified as "world-leading" or "internationally excellent". We also scored top marks of 24 in the most recent external evaluations of teaching held in 2001. Many of our staff have also won teaching awards. With such extensive and high quality teaching and training resources, we are able to offer you a vast range of course unit choices and areas for thesis supervision.

### Postgraduate study at the Graduate Centre

We welcome applicants from the UK and from abroad. The Graduate Centre in Politics offers a flexible and comprehensive range of postgraduate taught courses (MA and PGDip), externally approved research training and research degrees (PhD and MPhil). Our aim is to provide a challenging intellectual atmosphere for postgraduate study, along with the best possible support for individual students.

The Graduate Centre is a recognised outlet for the UK's Economic and Social Research Council's (ESRC) and Arts and Humanities Research Council's (AHRC) postgraduate awards and for University, School and discipline-level studentships. All our masters courses have been vetted and highly praised by external evaluation bodies. Our research training MAs in Political Science, Human Rights, and International Politics have ESRC recognition and are eligible for ESRC funding under its '1+3' scheme. We have a strong record in gaining scholarships for our students and we have a number of ESRC quota awards. Many of our 180 postgraduates are recipients of awards.

We welcome informal as well as formal enquiries and we will advise masters applicants on the choice of course that will best meet your needs and interests. We also work with prospective research students in order to identify appropriate supervisors and sources of funding and to develop research proposals. In particular, potential applicants for ESRC, AHRC, ORS awards and School, discipline-level and University studentships are invited to seek our expert advice at an early stage. The University of Manchester studentships are highly competitive, but a number are available each year, as are School and Politics-specific awards.

We look forward to welcoming you.

### Francesca Gains

Director of Graduate Studies  
Politics

# programme details

## research programmes

### Doctoral research

Carrying out doctoral research allows you to explore an aspect of the study of politics that you find particularly intriguing. By writing a PhD thesis, you will make an original contribution to knowledge. This is a personal challenge that some students particularly enjoy – and it also allows you to acquire important qualifications.

If you wish to pursue an academic career, having a PhD is a central requirement, while you are also provided with research training skills that are valued by a range of employers. Beyond this, doctoral students at Manchester have access to many increasingly significant skills training and personal development opportunities.

### Registration period

In order to gain a doctorate, you will carry out a research project over three years (with the possibility of a fourth year for 'writing up') and formulate your findings in a thesis of 80,000 words. The PhD registration period is three years full-time, or six years part-time. The University requires that all full-time PhD students complete within four years (seven years part-time).

### Supervision

Good supervision is essential to successful PhD work. As one of the largest politics departments in the UK, we are able to provide expert supervision in a wide range of areas (see 'staff research interests' below). We are committed to providing you with excellent support and guidance throughout your PhD programme.

You will be allocated two supervisors, who will meet with you regularly and provide feedback on your work. In addition, your progress is assessed regularly by review panels and the graduate team throughout your PhD. The graduate team – and, in particular, the PhD director – are also available to assist you in overcoming challenges that may arise during the research process.

### Graduate community

Our large community of more than 60 PhD students are fully integrated into the Politics research environment via membership of research clusters and other specialist research groups, attending seminars and other events. They also have access to work areas on the fourth floor of the Arthur Lewis Building, where the Politics discipline area is located.

Groups of PhD students are encouraged to develop their own initiatives to contribute to the research culture in Politics, organising seminar series,

workshops and conferences. A graduate online journal – Political Perspectives – is also edited by students within the discipline area.

### Research training

All our research students must undertake research training as part of their doctoral preparation. The precise requirements will depend on your prior training (eg whether you already hold an ESRC-recognised research route masters degree). We have research council recognition for our PhD (MA Research) training programmes in Political Science, International Politics and Human Rights. This means that applicants from the UK and other EU countries can apply through us for either three or four years of funding from the ESRC, in order to undertake training and research leading to a doctorate.

### Funding opportunities

To be considered for funding, you must apply for a place on the PhD programme and return the School of Social Sciences Funding Application Form by 1 March. The form is available online:

[www.manchester.ac.uk/socialsciences/postgraduate/research/funding](http://www.manchester.ac.uk/socialsciences/postgraduate/research/funding)

### Studentships

The School of Social Sciences offers studentships that cover home fees, plus a maintenance award. In 2009/10, Politics was able to award three such studentships. Award holders are expected to do a limited amount of seminar teaching. Please note that award holders from outside the EU have to pay the difference between home and international fees. Awards to cover this difference are available, but these require a separate application (see below under ORS).

Economic and Social Research Council (ESRC): Politics is able to award between one and two ESRC awards annually and may also put forward another student each year for the ESRC competition awards. To be eligible for an ESRC doctoral award, you must already have an MA in a relevant subject with the requisite amount of research training (as provided by ESRC-approved 'RT' MAs, or an equivalent programme).

If you do not yet have this training, you may apply for what is known as a '1+3' award, giving you a full four years of funding. In this case you will need to follow a Research Route MA in the first year of the doctoral programme (apply for a place on a Research Route MA and indicate in your cover letter that you wish to pursue a '1+3' programme). If you are a UK or non-UK EU citizen, you could be eligible for an ESRC

award, although non-UK EU students may only be eligible for a fees-only award. You can only apply for one of these awards through us, or one of the other select politics departments in the UK that have been accorded ESRC recognition for postgraduate training.

Arts and Humanities Research Council (AHRC): In the case of Political Theory, applicants from the UK and the EU can apply through Philosophy for funding from the Arts and Humanities Research Council (AHRC), depending on your research topic.

British Council Awards: International students are encouraged to contact the British Council in their home countries to find out about funding opportunities. Information can be found online:

[www.britishcouncil.org](http://www.britishcouncil.org)

### Overseas Research Students Award Scheme

The School of Social Sciences funds its own award scheme to cover the difference between tuition fees for a home postgraduate student and the full cost fee chargeable to an overseas postgraduate student. Full-time postgraduate students from outside the European Union are eligible.

Further information on fees and funding is available in our 'Fees, funding and applications' section below. For the latest up-to-date information, see the Politics funding and the School of Social Sciences funding web pages:

[www.manchester.ac.uk/socialsciences/disciplines/politics/postgraduate/funding](http://www.manchester.ac.uk/socialsciences/disciplines/politics/postgraduate/funding)

[www.manchester.ac.uk/socialsciences/postgraduate/research/funding](http://www.manchester.ac.uk/socialsciences/postgraduate/research/funding)

### Teaching opportunities

You will have the opportunity to apply to act as a Graduate Teaching Assistant (GTA). GTAs receive training and gain valuable teaching experience.

### Entry requirements

You are expected to have a UK masters degree, or overseas equivalent, in a relevant social science subject with a minimum overall average of 60%. You will also need a strong research proposal. Guidance for writing a proposal can be found online: [www.manchester.ac.uk/socialsciences/disciplines/politics/postgraduate/research/proposal](http://www.manchester.ac.uk/socialsciences/disciplines/politics/postgraduate/research/proposal)

If your first language is not English, you must prove your English Language skills. For details, see 'English Language requirements' towards the end of this brochure.



### MPhil

Our MPhil programme involves supervised research over one to two years, leading to the submission of a 40,000-word thesis.

For those of you seeking information about research degrees and training, you will find below lists of staff and their research interests, our research centres and a list of doctorates completed in the last year.

### Research interests of Politics staff

#### Dr Claire Annesley

Welfare politics and policy (UK and comparative); gender politics and policy; comparative European and German politics.

#### Dr Elena Barabantseva

Chinese nation-state; nationalism, transnationalism and ethnic politics.

#### Dr Adrian Blau

Democratic theory; electoral systems; corruption.

#### Dr Kimberley Brownlee

Philosophy and political theory; practical ethics and legal philosophy.

#### Dr Ian Bruff

Evolving and interactive relationships between European societies – particularly the Netherlands and Germany – and the world economy, and how Antonio Gramsci's writings enable us to analyse them in distinctive and innovative ways.

#### Professor William A. Callahan

Identity and security; Chinese foreign policy; IR theory; transnational flows of people, capital and ideas; East Asian IR; post-structuralism.

#### Dr Greig Charnock

Marxism, globalisation and anti-globalisation; neo-liberal restructuring; politics of development and Latin America.

#### Dr Karen Clarke

Social policy, gender relations, family policy, state; family relations, poverty and inequality.

#### Dr Paul Copeland

The political economy of European integration; varieties of capitalism; varieties of welfare capitalism and EU enlargement.

# staff research interests



## Dr Helen Dexter

Political violence and war; ethics in the context of war; critical security and strategic studies; cosmopolitanism.

## Professor Rosaleen Duffy

Global governance; global environmental politics; the environmental impact of criminalisation; conservation; tourism.

## Dr Francesca Gains

Comparative public policy; British government and politics; gender policy machinery; political management arrangements; public sector reform.

## Dr Jane Green

Comparative politics; British Government and politics; Britain and Europe; political sociology; research methods and research design.

## Professor Rachel Gibson

Politics of the new media; the impact of the internet on political parties; election campaigning and citizen participation.

## Professor Yoram Gorlizki

Contemporary Russian, Caucasian and Central Asian politics; Soviet political history; models of dictatorship; empirical analyses of trust.

## Dr Emmanuel-Pierre Guittet

Antiterrorism; surveillance and intelligence theories and practices; police and judicial cooperation; political violence; defence and security issues; critical security studies.

## Professor Alan Hamlin

Rational actor political theory; public choice theory; constitutional political economy; institutional and constitutional design; political motivations; the analysis of conservatism.

## Professor Alan Harding

Urban and regional development; governance and policy; spatial policy; state restructuring.

## Professor Peter Humphreys

Comparative European politics and policy; media and telecoms policy and regulation in Europe.

## Dr William Jennings

Comparative and British politics; government and public opinion; political behaviour; public policy; agenda-setting dynamics; blame avoidance by public officeholders; political methodology; the politics and management of risk in mega-projects and mega-events, such as the Olympic Games (London 2012) and the Millennium Dome.

## Professor Peter John

Local governance (UK); urban politics and policy; social capital; political behaviour (quantitative) and public policy theory.

## Dr Peter Lawler

Normative IR theory; war and armed intervention; discourses and practices of Western internationalism.

## Dr Jill Lovecy

Comparative political economy; politics of the EU, with special interest in France.

## Dr Huw Macartney

Gramscian historical materialism and financial markets.

## Dr Cristina Masters

Militarised masculinities; violence; feminist theory; war.

## Dr Laura Morales

Civic and political participation; social capital; migrants' integration and participation; West European political parties; survey data collection and analysis; gender and politics.

## Professor Mick Moran

Business and politics in the UK, US, Europe; the comparative study of regulation.

## Professor Kevin Morgan

Comparative labour movements; history of socialism; political ideas in Britain in the 19th and 20th centuries.

## Dr Martin O'Neill

Political philosophy; ethics; philosophy of action and in bioethics, especially the political dimension of bioethics.

## Dr Dimitris Papadimitriou

EU enlargement; EU governance; Greek politics; Romanian politics; pension reform in the EU.

## Professor Inderjeet Parmar

US foreign policy establishment; foundations and US foreign policy, neo-conservative and liberal internationalist think tanks and foreign policy; Anglo-American relations during wars.

## Dr James Pattison

International political theory, particularly the ethics of war, the privatisation of military force, humanitarian intervention, and the responsibility to protect.

## Professor Nicola Phillips

International political economy; development; political economy of the Americas; US hegemony.

## Dr Véronique Pin-Fat

Ethics, human rights and International Relations theory.

## Dr Thomas Porter

Political philosophy and ethics; focuses on justice, equality and the relations between political morality and morality more generally.

## Dr Jonathan Quong

Political liberalism; public reason; deliberative democracy; multiculturalism; distributive justice.

## Dr Piers Robinson

Media and world politics; news media and intervention; media coverage of civil war; new communication technologies and word politics.

## Dr Andrew Russell

Voting behaviour; party politics, participation and turnout; British politics.

## Dr Angleos Sepos

Europeanization, EU-Member State relations, differentiated integration, and EU as Empire.

## Dr Stuart Shields

Global political economy; historical materialism; Eastern Central European transition; EU enlargement.

## Dr Shogo Suzuki

International politics of China and Japan; international theory with reference to East Asia; Sino-Japanese relations.

## Dr Nick Turnbull

Social policy; interpretative public policy; political rhetoric; British politics.

## Dr Stephen de Wijze

Anglo-American theories of justice; political morality; multiculturalism and 'dirty hands'.

## Professor Rorden Wilkinson

Global governance; international trade; globalisation; critical historicism; international labour standards.

## Dr Angelia Wilson

Feminist theory, sexuality and politics; social policy.

## Japhy Wilson

Informed by the work of Henri Lefebvre, and concerns the relationship between globalisation, resistance and the transformation of social space, with particular attention to contemporary processes of regional development in Latin America.

## Professor Maja Zehfuss

War and the politics of ethics; memory, poststructural thought and international relations theory.

# programme details

## research programmes

### Research centres in Politics

**Centre for International Politics (CIP):** Includes specialists in International Relations theory, foreign policy, international political economy, security studies and development, who take theoretically informed, critical approaches to such research areas as globalisation, human rights, ethics, war, global governance, inequality, democratisation, and neo-liberalism.

**European Politics Research Unit (EPRU):** Promotes research by staff and doctoral students on European politics and policy – national, comparative and EU – and supports the dissemination of the results through workshops, seminars, conferences and its working paper and Manchester University Press monograph series.

**Manchester Centre for Political Thought (MANCEPT):** Provides an active forum for research in all aspects of political theory, from the history of political thought to contemporary analytical political philosophy. It pursues this aim by organising a series of seminars and one-day conferences on theoretical themes of current interest; by fostering research on particular topics through more specialised workshops; by sponsoring an annual international conference – Brave New World – for the presentation of postgraduate research in political theory; and by the publication of staff and postgraduate research in its MANCEPT Working Papers series.

**Institute of Political and Economic Governance (IPEG):** Co-directed by Professors Alan Harding and Peter John from Politics, but involves staff from across the University. Its aim is to build and extend the considerable research expertise on Governance at all spatial levels, from the neighbourhood, to the international. The Institute specialises in ensuring not only the excellence of its research work, but also in reaching out to practitioners and policymakers.

**Governance, Representation and Public Policy (GRP):** Focuses on issues of public policy in a range of fields, stretching from economic to social regulation. Underlying concerns are the role of democratic and representative politics in addressing these issues and how to better design policies and institutions of governance.

**Jean Monnet Centre of Excellence:** Provides a portal website for European integration-focused activities and studies in The University of Manchester and partners and stakeholders in the North West. The Centre aims to develop a platform to establish and strengthen local and regional links between stakeholders, practitioners, researchers, teachers and students. It supports seminars and conferences, usually held in conjunction with discipline-based research centres such as EPRU, as well as a series of Jean Monnet Cafés, which are open to the public. It is co-directed by Dr Dimitris Papadimitriou.

### Research clusters in Politics

Politics at Manchester has a number of clusters of distinctive research strength which bring together significant numbers of researchers.

**The Global Political Economy** cluster brings together research on a range of global issues including aspects of global governance and international institutions, political and economic development, and environmental issues. Researchers within the cluster embrace a range of methodological and theoretical perspectives.

Members of the **Poststructural and Critical Thought** cluster work within or are inspired by poststructural and critical thought. They share research interests in the politics of violence, the politics of ethics and the politics of knowledge. The majority of the group studies these themes in the context of international politics.

The **Comparative Public Policy** cluster examines the causes and consequences of public policies in contemporary democracies, with particular interest in the practice and application of the comparative method. The group is interested in developing the methodology of the study of public policy, including the use of experiments, quantitative analysis and mixed methods. Topics include gender and the policy process, the policy agenda, social policy, policy in the European Union, rhetoric and public policy, the media, and the role of bureaucracy.

The **Electoral Politics** cluster specializes in the study of elections, including: voting behaviour, public opinion, political parties, electoral systems, social movements and organisations, race and ethnicity, political geography, political psychology, new media, participation and voter turnout. Members of the cluster offer particular strength in quantitative and experimental methods, amongst a broad range of methodological and normative expertise.

The **Analytical Political Theory** cluster focuses on the core areas of contemporary analytical political theory including theories of justice (including global justice), liberalism, equality, rights, responsibility, democracy, and the links between political and moral philosophy. Members of the cluster also work on the interaction between theory and more practical and policy concerns.

### Other areas of research strength

Other areas in which high quality research is underway include:

- European Politics,
- East Asian Politics,
- Political History,
- Historical Materialism
- Politics of Gender,
- Politics of War and Terrorism.

### Links to cross disciplinary research centres

There are strong links between the research cluster on Comparative Public Policy and the Institute of Political and Economic Governance (IPEG), and between the research cluster on Electoral Politics and the Democracy, Citizenship and Elections Research Network (DCERN), just as there are links between researchers in Politics and the Jean Monnet Centre of Excellence in European Studies (JMCE) and the Centre for Chinese Studies (CCS), and other bodies. We recognize the strategic value of these links, and actively support links between Politics and such cross-disciplinary groupings.

**IPEG**  
[www.ipeg.org.uk](http://www.ipeg.org.uk)

**DCERN**  
[www.socialsciences.manchester.ac.uk/dcern](http://www.socialsciences.manchester.ac.uk/dcern)

**JMCE**  
[www.socialsciences.manchester.ac.uk/jeanmonnet](http://www.socialsciences.manchester.ac.uk/jeanmonnet)

**CCS**  
[www.ccs.humanities.manchester.ac.uk](http://www.ccs.humanities.manchester.ac.uk)

# programme details

## research programmes

### Recently completed PhD theses

#### **CASSIMATI, Anneta Antigoni**

The Role of the European Union in the Establishment of Regional Institutions: The Cases of Greece and England Compared.

#### **CHO, Young Chul**

South Korea's National Security, State Identity and Engagement Policy toward North Korea during the Kim Dae Jung Administration (1998-2003).

#### **FERGUSON, Lucy**

Production, Consumption and Reproduction in Global Political Economy: The Case of Tourism Development in Central America.

#### **DUROSE Catherine**

Street Level Bureaucrats or Civic Entrepreneurs: The Role of Public Officials in a Governance Era.

#### **GEORGIEVA, Mihaela**

Constructing Justice: Motivating and Justifying Liberal Neutrality.

#### **GOFIE, Solomon**

State-Society Relationships and Human Rights in Ethiopia: A Critique of State-Centred Approach.

#### **GURGEL Jnr, Garibaldi Dantas**

Health Sector Reform in Brazil: Past, Present and Future.

#### **HARMAN, Sophie**

The World Bank, Civil Society Organisations, and HIV/AIDS: A Critical Assessment of the Dynamics of Engagement.

#### **MAK, Stephen**

Future War: The Revolution in Military Affairs and Unconventional Warfare.

#### **MONTOYA, Catalina**

Framing 'Event-Driven News' in the Colombian War: The Promotion of the US Agenda in the Colombian Armed Conflict Through the Pages of El Tiempo Newspaper.

#### **MURPHY, Denis**

Between the State and International: A Critical Realist Analysis of US Decline.

#### **NEAL, Rebecca**

Women in National Socialist Europe: A Question of Moral Responsibility.

#### **RAMBAREE, Komalsingh**

The Ecology of Internet and Early Adult Sexuality in a Technology-Driven Mauritian Society.

#### **REDHEAD, Robin**

Reading the Visual: Gender, Human Rights and International Relations.

#### **RENTEA, Simona**

The Limits of Weberian State in International Relations Theory.

#### **SCOTT, James**

A Critical Evaluation of Developing Countries' Participation in the General Agreement on Tariffs and Trade and World Trade Organisation.

#### **SCOTT, Nicola**

The North-South 'Triple Helix' of Research and Development in Crop Biotechnology: A Study of Depoliticising 'Capacity Building' Through a Mexican Case Analysis.

#### **STAPLES, Kelly Louise**

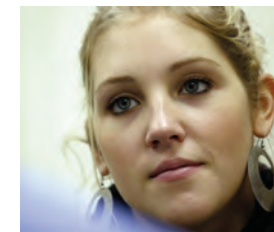
Justice, Community and Membership: Revisiting Statelessness in Political Theory.

#### **THOMPSON, McPherse**

The Funding of Political Parties: An Analysis of Some of the Underlying Factors that Lead to the Proliferation of Corruption in the Caribbean.

#### **WORTHY, Ben**

Policy Making in British Central Government: The Freedom of Information Act 2000: A Case Study.



# programme details

## taught courses

**NB We are always in the process of improving our degree courses and therefore changes ahead of 2010/11 are likely. Please consult our web pages and contact the relevant pathway directors (listed below) for the most up-to-date information.**

### MA

We offer you three comprehensive suites of MA courses in Political Science, International Politics and Human Rights. Each has two routes: an ESRC-approved research route, allowing you to go on to study for a Doctorate, and a standard route. Within each of these routes, you choose a specialist subject pathway.

**MA in Political Science:** Choose between four pathways: European Politics and Policy; Governance and Public Policy; Political Theory; Gender, Politics and Policy; and Democracy and Elections.

**MA in International Politics:** Choose either International Relations, or International Political Economy.

**MA in Human Rights:** Choose either the Law/Political Science pathway, or the Political Science pathway.

We also offer the following:

**MA in Politics:** This degree allows you to choose from the full range of course units available in Politics. It is especially suited to those who, for career or professional reasons, have a specific requirement for extra qualifications and the acquisition of specific knowledge and skills. It is available by standard route only.

**MA in Political Economy:** Offered in collaboration with the Political Economy Institute, this degree has an ESRC-approved research route as preparation for further doctoral study, and a standard route. The course is taught by academic staff drawn from across the Faculty of Humanities: in the School of Social Sciences, the School of Environment and Development and the Manchester Business School. The MA can be pursued through one of four pathways: Theoretical Political Economy; Political Economy of Society, Space and Environment; Political Economy of Finance, Business and Work; or Political Economy of Development.

### Assessment

All Politics MA courses are examined on the basis of continuous assessment (eg essays, oral presentations and participation, and a 12,000 to 15,000-word dissertation). All last for 12 months full-time, or 24 months part-time, and consist of eight examined course units, taught in weekly two or three-hour classes over a single semester.

Your dissertation is written between May and September. Four course units are usually taken in semester one (September to December) and four in

semester two (February to May). You can also receive training in computing, career and communication skills.

### Entry requirements

To apply for a place on a taught graduate MA in Politics, you must have obtained or be likely to obtain at least a first degree in Politics, or a related subject. This degree must be of a standard at least equivalent to a UK Upper Second class Honours degree (eg a CGPA of 3.0/4.0 or better) from a recognised university.

If you do not have this type and standard of qualification, you can still apply for a place on the postgraduate diploma route.

### Postgraduate diplomas

Our postgraduate diploma (PGDip) course offers a bridge between undergraduate and MA courses, for those who lack the qualifications for direct entry to the MA. The diploma can meet the needs of graduates who wish to transfer from a related discipline, or who in other ways do not qualify for immediate admission to the MA courses. On the diploma path, you take eight course units over two semesters, but do not write a dissertation – this diploma combines appropriate undergraduate and postgraduate course units.

The diploma course offers two pathways: the diploma-only pathway and the 'diploma route to MA'. In liaison with the MA director, students on the diploma-only pathway choose 50% of their courses from the third-year undergraduate syllabus and 50% from the MA postgraduate course units on offer. This pathway does not allow you to transfer to the MA in the same academic year. Subject to satisfactory completion of this pathway, you can apply for the MA course in subsequent years.

The 'diploma route to MA' requires you to take courses on your chosen 'standard route' MA course. All of the courses that you undertake will be at the MA level. If you achieve course assessment marks at MA level (that is, at or above the pass mark of 50%) on all of your courses, you are upgraded to the MA course and permitted to proceed to the dissertation. If you do not qualify to move over to the MA but you pass all the courses at diploma level (that is, at or above the pass mark of 40%), you will receive a postgraduate diploma in lieu of the MA.

### Research route MAs

- MA in Political Science (Research)
- MA in International Politics (Research)
- MA in Human Rights (Research)
- MA in Political Economy

**Intended for:** Those seeking to go on to complete a three-year doctoral programme, or who wish to obtain an externally credited MA with rigorous research training.

UK and EU candidates on this route are eligible to apply for three ('+3') or four ('1+3') year Economic and Social Research Council (ESRC) scholarships, or AHRC scholarships.

Please note that training in generic social science research methods is fundamental to the research route MA. The strong emphasis upon theories and research methods in the social sciences reflects the view that preparation for a successful research career – whether pursued through a PhD, or in future employment – requires a general grounding in social science research methods, as well as specialisation in a particular field. Grounding in the philosophy of social science provides an awareness of what is at stake in contrasting approaches and a basis for critical evaluation of those approaches and the research methods they advocate. Training in qualitative and quantitative methods provides basic competence in core research methods.

The three Research MAs have a common training element consisting of the five following course units:

### Quantitative Methods (15 credits)

Provides a basic level training in quantitative methods, and is designed around the ESRC training guidelines for research methods. It features training in the theory and method of survey analysis, and lectures are supported by weekly lab classes providing integral hands-on learning using real government surveys. Training in SPSS is provided and there is a well-developed system of student support, including optional weekly drop-in tutorial sessions.

### Qualitative Methods (15 credits)

Offers both an overview of qualitative approaches as a whole that focuses upon the different rationales and issues they entail, and hands-on training in at least three specific methods. After two introduction sessions, you will choose three five-credit, workshop-based options from a menu including: Archival Research; Narrative Analysis; Elite Interviewing; Focus Groups for Social Research; Doing Interviews; Computerised Qualitative Analysis; Qualitative Comparative Analysis and Case Study Methods; Practising Participant Observation; and Photography as a Research Method.

### Philosophy of Social Science

How and why do we study politics in the ways that we do – and should we do things differently? This

course unit examines key issues in the philosophy of social science, with special attention to the way we actually do political science and political theory. While many philosophy of social science courses are very abstract, this unit is also aimed at guiding the practice of research in politics. We will examine such issues as: whether politics is a science; the logic of comparison; post-positivism and the social construction of reality; meaning and interpretation; facts and values; different ideas of rationality; and the conceptual basis of political research.

### Advanced Research in Politics

Offers an opportunity for you to make the transition from student of politics to independent scholar. It provides an essential introduction to some of the most important concepts in social science research theoretical as well as empirical. They offer ways of thinking about politics and ways of testing theories in politics. Understanding of major theoretical and empirical debates underpins all advanced scholarly work. By the end of this course unit, you are expected to have a deep understanding of the contribution of these concepts and to be capable of critically evaluating their strengths and weaknesses. You will complete the unit prepared to apply these concepts in two ways: the first in evaluating original published research by leading scholars across all fields and your main area of interest, and the second in developing testable theoretical hypotheses in original research ideas, in the form of specifying your own research questions.

### Dissertation Research Design

Assists you in planning your dissertation by: introducing research programmes in the department; identifying appropriate supervisors; addressing the selection of appropriate data sources and methods; considering the proposed outcomes, users and beneficiaries of the proposed research; considering the issues of time management, group work and presentation skills; and completing a research design.

If you have chosen the MA Political Science (Research), you must then choose which of the five subject specialist pathways you wish to study: European Politics and Policy; Governance and Public Policy; Political Theory; Gender, Politics and Policy; or Democracy and Elections. For those taking the MA International Politics (Research), the choice is either International Relations, or International Political Economy. For those taking the MA Human Rights (Research), the choice is either the 'Law/Political Science' pathway or 'Political Science' pathway.



# programme details

## taught courses - research route MAs

### MA in Political Science (Research)

#### European Politics and Policy pathway

**Dr Jill Lovecy**  
tel +44 (0)161 275 4881  
fax +44 (0)161 275 4925  
email Jill.Lovecy@manchester.ac.uk

This course draws from one of the strongest centres for European politics in the UK. It combines analytical and conceptual rigour with topical subjects relating to the governance and policies of the European Union and their impact on the domestic politics of its member states. The course also focuses on processes of Europeanisation, both within the context of the EU's existing member states, and also on candidate countries and the EU's neighbours.

Building on a strong comparative perspective (across Europe and the EU), the course offers you an excellent range of compulsory and optional units with strong areas of expertise in gender and media policies; varieties of European capitalism; nationalism and political violence; and the EU's external relations.

#### Who is this pathway for?

The course is designed for those who want to combine strong transferable research skills with focused expertise in European politics. It is ideal if you seek to pursue a doctoral degree, or a career in research. It will also appeal to those seeking employment in government at the supranational, national and sub-national levels, as well as to those wishing to pursue careers in journalism, teaching and international commerce.

The course also attracts students from other European countries wishing to pursue postgraduate study abroad, as well as growing numbers employed in business and government elsewhere who have to deal with the European Union.

#### Course structure

- Five compulsory training course units (as above)
- Two compulsory core course units: The Politics of Europeanisation, and The European Union: Politics and Policy-Making
- Further options – you choose one unit from the full list of Politics-wide optional units (see page 26)

#### Political Theory pathway

**Dr Tom Porter**  
tel +44 (0)161 275 4908  
fax +44 (0)161 275 4925  
email thomas.porter-2@manchester.ac.uk

There is a long tradition of specialising in the study of political theory at Manchester. Between them, those teaching on this pathway cover a wide variety of fields of interest: from the major debates in contemporary political philosophy (around topics of rights, justice and political morality), to an emphasis on those traditions of European political thought (from the Enlightenment to the Frankfurt School) that have shaped the self-understanding of modernity.

#### Course structure

- Five compulsory training course units (as above)
- Two compulsory core course units: Normative Analysis and Moral Reasoning, and Political Theory – Research Training Seminar
- Further options – you choose one unit from the full list of Politics-wide optional units (see page 26)

#### Democracy and Elections pathway

**Dr Andrew Russell**  
tel +44 (0)161 275 4250  
fax +44 (0)161 275 4925  
email andrew.russell@manchester.ac.uk

#### Who is this pathway for?

This pathway will appeal to students interested in aspects of formal and informal politics, party and non-party engagement, the elected and electors and in the relationship between the process of government and the normative foundations of democracy.

#### Course structure

- Five compulsory training course units (as above)
- Two compulsory core course units: Political Parties in Contemporary Britain, and Democracy Theory and Practice
- Further options – you choose one course unit from the full list of Politics-wide optional units (see page 26)

#### Governance and Public Policy pathway

**Dr Andrew Russell**  
tel +44 (0)161 275 4250  
fax +44 (0)161 275 4925  
email andrew.russell@manchester.ac.uk

This course offers you an opportunity to explore one of the key political science and public policy issues of the 21st century: how, in a complex and globalised world, can forms of decision-making over public affairs be constructed in a way that delivers not only legitimacy, but also an effective capacity for action? What impact do governance arrangements have on the relationship between the state and citizens?

#### Who is this pathway for?

Unpacking core concepts around democracy, citizenship and public policy, drawing on a variety of contemporary material, this course will appeal to those interested in governance at any level: neighbourhood, local, national, European and global. It will provide a base if you intend to either go on to undertake a PhD in the area, or seek employment requiring advanced research skills in the public, private or voluntary sector. You also benefit from a close connection to the Institute of Political and Economic Governance (est. 2002), which provides a major focus for research and practitioner and academic exchange over governance issues. For details, see: [www.ipeg.org.uk](http://www.ipeg.org.uk)

#### Course structure

- Five compulsory training course units (as above)
- Two compulsory core course units: Understanding Governance, and Governance and the Welfare State
- Further options – you choose one unit from the full list of Politics-wide optional units (see page 26)



# programme details

## taught courses - research route MAs



### MA in International Politics (Research)

#### International Relations pathway

Dr Stuart Shields

email [stuart.shields@manchester.ac.uk](mailto:stuart.shields@manchester.ac.uk)

This pathway provides extensive coverage of the field, with a significant emphasis on the critical and normative dimensions of contemporary international relations scholarship. As well as research training, it provides you with a critical grounding in the theory and practice of international politics in an era of globalisation. Compulsory course units are complemented by core course units in global ethical and normative issues, security studies, foreign policy and international political economy.

#### Course structure

- Five compulsory training course units (as above)
- Two compulsory core course units: Graduate Seminar in International Politics, and Advanced Graduate Seminar in International Politics
- Choice between two course units: EITHER Security Studies OR Contemporary US Foreign Policy
- Further options – you choose one unit from the full list of Politics-wide optional units (see page 26)

### International Political Economy pathway

Dr Greig Charnock

tel +44 (0)161 275 4899

fax +44 (0)161 275 4925

email [greig.charnock@manchester.ac.uk](mailto:greig.charnock@manchester.ac.uk)

International Political Economy is a growing component of our graduate programme. Two compulsory course units are complemented by optional course units, which allow a focus on issues of political and economic change and regulation at global or transnational level; or on the domestic and international politics and political economy of specific regions or states; or on further topics in IPE and international relations.

Alternatively, the programme director may approve other course units offered in the Centre, or elsewhere in the Graduate School, where they fit with your individual research plans, and with the broad interdisciplinary field of international political economy.

#### Course structure

- Five compulsory training course units (as above)
- Two compulsory core course units: Critical Approaches to International Political Economy, and Globalisation and IPE
- Further options – you choose one unit from the full list of Politics-wide optional units (see page 26)

### MA in Human Rights (Research)

Dr James Pattison

tel +44 (0)161 275 4931

fax +44 (0)161 275 4925

email [james.pattison@manchester.ac.uk](mailto:james.pattison@manchester.ac.uk)

As well as generic research training, this course provides you with an advanced, critical, interdisciplinary and systematic understanding of human rights issues within a global context via two pathways. It is an interdisciplinary degree, which gives you exposure to developments in international politics, political theory, and law in order to better understand the complex global environment in which human rights claims are made.

Questions addressed include, what are human rights? Can there be space for human rights in world affairs? Who is responsible for the protection of human rights in world politics? How effective is human rights law? These theoretical and practical concerns form the central focus of the degree.

#### Who is this course for?

This degree is recognised by the ESRC (Economic and Research Council) as fulfilling the training requirements for the '1+3' four-year PhD programme, and will primarily be of interest to students eligible for ESRC funding for which a recognised research MA is essential, those seeking to go on to PhD, or those seeking a research-training MA to enhance their employment prospects.

To reflect the diversity of students' interests, we have developed two pathways: The 'Political Science' pathway and the 'Law/Political Science' pathway.

#### Human Rights: 'Political Science' pathway

- Five compulsory training course units (as above)
- Three compulsory core course units: Theories of Rights, Ethics in World Politics, and Human Rights in World Politics

#### Human Rights: 'Law/Political Science' pathway

- Five compulsory training course units (as above)
- Two compulsory core course units: Human Rights Law, and Human Rights in World Politics

### MA in Political Economy (Research)

Professor John O'Neill

tel +44 (0)161 275 4853

fax +44 (0)161 275 4925

email [john.f.o'neill@manchester.ac.uk](mailto:john.f.o'neill@manchester.ac.uk)

This degree offers you an exciting and unique cross-disciplinary curriculum of study in political economy.

#### Who is this course for?

It is an ESRC-recognised programme that is aimed at students who intend to continue to doctoral study, or who are looking to develop research skills for later employment. The programme will enable you to understand and critically engage in contemporary debates on the nature and future of the national and global economy and, through your chosen pathway, to acquire a detailed understanding of one of the constituent areas of Political Economy.

#### Course structure

There are five compulsory course units: Theoretical Approaches to Political Economy; Philosophy of Social Science; Dissertation Research Design, Quantitative Methods; and Qualitative Methods.

You will choose a further two course units from one of four MA pathways:

Theoretical Political Economy pathway: Draws on politics, philosophy and economics to critically engage with both classical and more recent theoretical approaches to political economy.

Political Economy of Society, Space and Environment pathway: Provides the opportunity to analyse and understand interrelationships between political action, economic activity and environmental change at local, regional and global scales.

Political Economy of Finance, Business and Employment pathway: Draws together course units from specialists in business and the social sciences to bring political economy analysis to bear on contemporary issues around business, finance and employment.

Political Economy of Development pathway: Enables you to analyse and understand the nature and determinants of economic, and more broadly, human development.

You take at least one core course unit from your chosen pathway together with one other optional unit from that pathway.

# programme details

## taught courses - standard route MAs



### 'Standard route' MAs

- MA in Political Science (Standard)
- MA in International Politics (Standard)
- MA in Human Rights (Standard)
- MA in Politics (Standard)
- MA in Political Economy (standard)

**Intended for:** Those wishing to obtain a high-level specialist subject qualification, but who do not wish to pursue rigorous research training. While less training-based than the Research route MAs, they still give you the opportunity to explore an area in-depth and at a high level of understanding.

We currently offer four standard route MAs. All have two common training course units – Advanced Research in Politics (15 credits) and Dissertation Research Design (15 credits) – and, with the exception of the MA in Politics, all consist of two/three core units, leaving you to choose three/four units to suit your interests. Please note that the remaining credits must be chosen from the optional units list (see page 26).

Please note: Although this MA does not preclude you from undertaking a PhD in the UK, it does not provide the training required by the ESRC for eligibility to apply for one of its funding awards. Students from outside the UK or the EU are not eligible for ESRC funding. Nevertheless, many universities, including Manchester, require you to undertake research training equivalent to that provided in our research MAs during the first year of a doctoral course, before permitting you to proceed.

### Aims of standard route MA courses

- Provide an advanced, systematic and critical understanding of issues at the forefront of political science, international politics or human rights
- Provide an advanced critical awareness of the location of political science, international politics, or human rights within the wider field of social science, both in terms of its subject matter and the most prominent theoretical and methodological orientations therein
- Provide research practice through a required dissertation, linked to a research course located within Politics and supervised by an active researcher
- Train you to become an autonomous and self-aware life-long learner, able to apply your existing knowledge and skills in innovative ways in a variety of contexts
- Enable you to communicate your acquired knowledge and research findings to specialist and non-specialist audiences
- Provide you with the knowledge and skills to equip you for a range of careers in the public and private sectors that require advanced knowledge of the theoretical and practical dimensions of political science and international politics; and permit you to specialise, according to your anticipated career progression

## MA in Political Science (Standard route)

You take:

- Advanced Research in Politics
- Dissertation Research Design

Then you choose your other six course units from one of five specialist pathways:

### European Politics and Public Policy pathway

**Dr Jill Lovecy**

tel +44 (0)161 275 4881

fax +44 (0)161 275 4925

email [jill.lovecy@manchester.ac.uk](mailto:jill.lovecy@manchester.ac.uk)

This course draws from one of the largest and most successful centres for European politics in the UK. It combines analytic questions with applications to subjects of direct relevance to contemporary European government and governance. Units offered focus on the relationship between political systems, policy processes and outputs, while the course as a whole emphasises the comparisons, contrasts and linkages between systems in the various parts of Europe.

### Who is this pathway for?

The course has been designed with maximum flexibility in mind. It will appeal to students for whom a taught MA will be a prelude to employment in government service at the supranational, national and sub national levels, or to careers in journalism, teaching and international commerce. The course also attracts students from other European countries wishing to pursue postgraduate study abroad, as well as growing numbers employed in business and government elsewhere who have to deal with the European Union.

As well as the above two compulsory course units, you take two core units:

- The Analysis of European Politics and Policy
- The European Union: Politics and Policy Making

You also choose four units from the full list of Politics-wide optional units (see page 26).

### Political Theory pathway

**Dr Tom Porter**

tel +44 (0)161 275 4908

fax +44 (0)161 275 4925

email [thomas.porter-2@manchester.ac.uk](mailto:thomas.porter-2@manchester.ac.uk)

This course introduces you to major debates in contemporary political theory and to those traditions of European political thought – from the Enlightenment, to the Frankfurt School and postmodernism – which have shaped the self-understanding of modern societies. The compulsory units provide rigorous analytical training through the examination of central concepts, and of methodological approaches to texts and historical contexts. The core units allow you to pursue your interest in areas of specialised knowledge.

### Who is this pathway for?

The course is ideal for those who plan to pursue non-academic careers in fields related to business, government and non-government organisations, and who wish to acquire useful skills of theoretical analysis, clarity of argument and of practical application of philosophical issues to the pressing concerns of current politics.

As well as the above two compulsory course units, you take two core units:

- Normative Analysis and Moral Reasoning
- Political Theory – Research Training Seminar

You also choose four units from the full list of Politics-wide optional units (see page 26).

# programme details

## taught courses - standard route MAs

### Governance and Public Policy pathway

Dr Andrew Russell

tel +44 (0)161 275 4250

fax +44 (0)161 275 4925

email andrew.russell@manchester.ac.uk

This course offers you an opportunity to explore the key political science question of the 21st century: how, in a complex and globalised world, can forms of decision-making over public affairs be constructed in a way that delivers not only legitimacy, but also an effective capacity for action? The approach to this core question involves a theoretical and analytical unpacking of core concepts to do with democracy, governing through conflict and co-operation and methods for creating the conditions for collective action. It also involves in the units on offer an opportunity for you to apply insights gleaned in a variety of contemporary settings.

#### Who is this pathway for?

The pathway is perfect for those interested in governance at any level: neighbourhood, local, national, European and global. It will provide a base for employment in a range of sectors, from public service employment at the cutting edge, through corporate responsibility units in the private sector, to a variety of non-profit organisations. You will also benefit from a close connection to the Institute of Political and Economic Governance (IPEG), which aims to provide a major focus for research, as well as practitioner and academic exchange over governance issues.

As well as the above two compulsory course units, you take two core units:

- Understanding Governance
- Governance and the Welfare State

You also choose four units from the full list of Politics-wide optional units (see page 26).

### Democracy and Elections pathway

Dr Andrew Russell

tel +44 (0)161 275 4250

fax +44 (0)161 275 4925

email andrew.russell@manchester.ac.uk

#### Who is this pathway for?

This pathway will appeal to students interested in aspects of formal and informal politics, party and non-party engagement, the elected and electors and in the relationship between the process of government and the normative foundations of democracy.

As well as the above two compulsory course units, you take two core units:

- Political Parties in Contemporary Britain
- Democracy Theory and Practice

You also choose four units from the full list of Politics-wide optional units (see page 26).

## MA in International Politics (Standard route)

You take:

- Advanced Research in Politics
- Dissertation Research Design

Then you choose your other six course units from one of two specialist pathways:

### International Relations pathway

Dr Stuart Shields

tel +44 (0)161 275 7824

fax +44 (0)161 275 4925

email stuart.shields@manchester.ac.uk

This course provides you with critical grounding in the theory and practice of international politics in an era of globalisation. Compulsory course units in the theory and methods of international relations are complemented by optional course units in: ethical and normative issues; security studies; foreign policy; international political economy; global governance; and the international politics of Europe and the developing world.

#### Who is this pathway for?

The course is designed for students for whom a taught MA will be a prelude to careers in fields related to government and non-governmental organisations, as well as teaching, journalism, or any career where advanced knowledge of international politics coupled with an advanced capacity to communicate effectively will be an advantage. It will appeal particularly to those with an interest in the political and ethical issues which arise from current disparities in wealth and power in the international system.

As well as the above two compulsory course units, you take two core units:

- Graduate Seminar in International Politics

And one of the following:

Either

- Contemporary US Foreign Policy

Or

- Security Studies

You also choose four units from the full list of Politics-wide optional units (see page 26).

### International Political Economy pathway

Dr Stuart Shields

tel +44 (0)161 275 7824

fax +44 (0)161 275 4925

email stuart.shields@manchester.ac.uk

This course explores the foundations of the rapidly developing discipline of International Political Economy. Through two compulsory course units, it first looks at the major approaches to the field, and then applies these to key topics linking international, transnational and global levels. Issues include: finance; multinational corporations; international organisation; global governance; transnational civil society; and regional, national and sub-national perspectives from around the world.

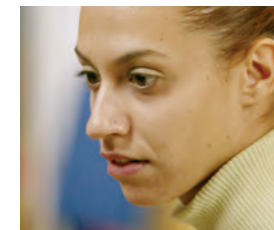
#### Who is this pathway for?

The course is ideal for students who plan to pursue non-academic or research careers in international business, government, regional and international organisations, non-governmental bodies, among others. It will appeal particularly to those with a broad interest in the politics of globalisation as well as developments in particular states, regions, international organisations, and problems such as regulatory reform, development, international crises, and the like.

As well as the above two compulsory course units, you take two core units:

- Critical approaches to International Political Economy
- Globalisation and IPE

You also choose four units from the full list of Politics-wide optional units (see page 26).



# programme details

## taught courses - standard route MAs

### MA in Human Rights (Standard route)

Dr James Pattison

tel +44 (0)161 275 4931

fax +44 (0)161 275 4925

email james.pattison@manchester.ac.uk

The MA in Human Rights focuses on the pressing questions of human rights. Can there be space for human rights in world affairs? Who is responsible for the protection of human rights in world politics? How effective is human rights law? These theoretical and practical concerns form the central focus of the degree and are addressed through the compulsory course units.

#### Who is this course for?

This 'standard route' course is designed for students for whom a taught MA will be a prelude to careers in fields related to government and non-governmental organisations, as well as teaching, journalism or any career where advanced knowledge of human rights coupled with an advanced capacity to communicate effectively will be an advantage. It will appeal particularly to those with an interest in the political and ethical issues that arise from widespread human rights violations globally.

The course provides you with an advanced, critical, interdisciplinary and systematic understanding of human rights issues within a global context. It is an interdisciplinary degree, which allows you exposure to developments in international politics, political theory, and law in order to better understand the complex global environment in which human rights claims are made.

You take:

- Advanced Research in Politics
- Dissertation Research Design

Then you choose your other six course units from one of two specialist pathways.

#### Human Rights: 'Political Science' pathway

As well as the above two compulsory course units, you take three core units:

- Theories of Rights
- Ethics in World Politics
- Human Rights in World Politics

You also choose three units from the full list of Politics-wide optional units (see page 26).

#### Human Rights: 'Law/Political Science' Pathway

As well as the above two compulsory course units, you take two core units:

- Human Rights Law
- Human Rights in World Politics

You also choose four units from the full list of Politics-wide optional units (see page 26).

### MA in Politics (Standard route)

Dr Tom Porter

tel +44 (0)161 275 4908

fax +44 (0)161 275 4925

email thomas.porter-2@manchester.ac.uk

#### Who is this course for?

This MA allows you to choose from the full range of course units available in Politics, according to your professional and personal needs. It is especially suited to those who have a specific requirement for extra qualifications and the acquisition of specific knowledge and skills, such as public servants, administrators, journalists and teachers in secondary and further education, among others.

You take two compulsory course units:

- Advanced Research in Politics
- Dissertation Research Design

You also choose six units from the full list of Politics-wide optional units (see page 26). We will agree with you the exact range of courses to be chosen according to your professional requirements, or personal interests.

### MA in Political Economy (standard route)

Professor John O'Neill

tel +44 (0)161 275 4853

fax +44 (0)161 275 4925

email john.f.o'neill@manchester.ac.uk

This degree offers an exciting and unique cross-disciplinary curriculum of study in political economy. The course will enable you to understand and critically engage in contemporary debates on the nature and future of the national and global economy and, through your chosen pathway, to acquire a detailed understanding of one of the constituent areas of Political Economy.

On the Standard Route there are three compulsory course units: Theoretical Approaches to Political Economy; Philosophy of Social Science; Dissertation Research Design. You then choose a further two units from one of four MA pathways:

**Theoretical Political Economy pathway:** Draws on politics, philosophy and economics to critically engage with both classical and more recent theoretical approaches to political economy.

**Political Economy of Society, Space and Environment pathway:** Provides the opportunity to analyse and understand interrelationships between political action, economic activity, and environmental change at local, regional and global scales.

**Political Economy of Finance, Business and Employment pathway:** Draws together course units from specialists in business and the social sciences to bring political economy analysis to bear on contemporary issues around business, finance and employment.

**Political Economy of Development pathway:** Enables you to analyse and understand the nature and determinants of economic, and more broadly, human development.

You will take at least two core course units from your chosen pathway, together with two other optional units, at least one of which will be from that pathway.

All our courses are flexible and can be studied part-time over two years; however, we do not at present offer an evening programme. Prospective part-time students are invited to consult us regarding the timetabling of course units, where appropriate.



# programme details

## taught courses

### Politics optional course units

Below is a list of all politics optional course units, organised by unit code. All Politics course units are worth 15 credits. For further information on Politics postgraduate course units, visit the Politics MA course unit database online:

[www.manchester.ac.uk/socialsciences/postgraduate/taught/units/courselist.html?department=13](http://www.manchester.ac.uk/socialsciences/postgraduate/taught/units/courselist.html?department=13)

### Course units by code

POLI 60031	Varieties of Capitalism
POLI 60052	Democracy and Administration
POLI 60071	International Terrorism under Question
POLI 60121	Political Parties in Contemporary Britain
POLI 60182	Global Justice
POLI 60221	The Ethics of Killing
POLI 60242	Rhetoric in Politics
POLI 60321	Perspectives on Contemporary China
POLI 61022	Migration and the Global Political Economy of Inequality
POLI 70102	The Politics of Europeanisation
POLI 70191	Media, Politics and Policy
POLI 70272	Understanding Governance
POLI 70282	Globalisation and IPE
POLI 70311	Critical Approaches to International Political Economy
POLI 70381	The European Union: Politics and Policy-Making
POLI 70401	Graduate Seminar in International Politics
POLI 70412	Advanced Graduate Seminar in International Politics
POLI 70422	Global Governance
POLI 70451	Ethics in World Politics
POLI 70462	Security Studies
POLI 70492	Human Rights in World Politics
POLI 70602	Political Theory Research Training Seminar
POLI 70611	Normative Analysis and Moral Reasoning
POLI 70671	Women, Sex and Politics
POLI 70692	Justice and Pluralism
POLI 70721	Theories of Rights

POLI 70772	Philosophy of Social Science
POLI 70832	Contemporary US Foreign Policy
POLI 70852	EU as an International Actor
POLI 70872	Democracy: Theory and Practice
POLI 70891	Governance and the Welfare State
POLI 71032	Comparative Gender Politics
POLI 71052	Post-Communist Transitions
POLI 71062	China in the International System

**Please note** that course availability of optional units may be subject to change.

We are always in the process of improving our programmes and therefore changes ahead of 2010/11 are likely. Please consult our web pages and contact the relevant pathway directors (listed above) for the most up-to-date information.

### Graduate organisation

The Graduate Centre in Politics is part of the School-wide Graduate School of Social Sciences, which supplements discipline-level provision with a range of half-day and day-long workshops in computing, data handling, bibliographical skills, career development and employment-related skills. The School also co-ordinates the course units on Quantitative and Qualitative Research Methods.

The Arthur Lewis Building has a dedicated area in the atrium with computer terminals, which is accessible to taught postgraduate students 24/7. There is also a study area with computers and wireless access, which is mainly an area for reading and studying. Research postgraduate students have access to desks and networked computers adjacent to the Politics discipline area on the fourth floor of the building.

We encourage and assist graduates to publish the results of their research and doctoral students to become involved in undergraduate teaching, for which compulsory training is provided. Our graduate students regularly organise major conferences, which attract participants from across the UK and abroad. Politics is also home to six major research groupings and centres: the European Policy Research Unit (EPRU), the Centre for International Politics (CIP), the Manchester Centre for Political Thought (MANCEPT), the Centre for Philosophy, Governance, Representation and Public Policy (GRP) and the Institute for Political and Economic Governance (IPEG). Doctoral research students are given associate status in one of these groupings as appropriate.

The scale and diversity of our postgraduate student body brings a range of experience and viewpoints that enriches and enlivens debate.

### Fees, funding and applications

#### Fees

Current fee levels can be found online: [www.campus.manchester.ac.uk/ssc/tuitionfees](http://www.campus.manchester.ac.uk/ssc/tuitionfees)

#### Funding

Politics at Manchester offers a range of competitive studentships, scholarships and bursaries. These include: the School of Social Sciences Politics Research Studentships; the Economic and Social Research Council (ESRC) 1+3/+3 Open Studentship Competition; the Economic and Social Research Council (ESRC) Quota Awards in Politics; the Manchester School of Social Sciences Bursary for Postgraduate Study and the Arts and Humanities Research Council (AHRC) Doctoral Competition (administered by Philosophy).

If you wish to be considered for one of these you must apply in time for the 1 March deadline and also return the School of Social Sciences Funding Application form.

UK and EU applicants can apply for ESRC and AHRC (fees only for non-UK EU students) funding through us. Potential applicants for our ESRC 1+3 MA / PhD quota awards should contact us by the middle of February at the very latest. Our training courses have ESRC recognition, which means that applicants are eligible for their three and four year doctoral awards. Applicants may seek advice from the Graduate Centre on the content of their application.

[www.esrc.ac.uk](http://www.esrc.ac.uk)  
[www.ahrc.ac.uk](http://www.ahrc.ac.uk)

The School of Social Sciences also offers research studentships that cover home fees, plus a maintenance award. In 2009/10, Politics was able to award three such studentships. Awards holders are expected to do a limited amount of seminar teaching. Please note that award holders from outside the EU have to pay the difference between home and international fees. Awards to cover this difference are available, but these require a separate application. The deadline for applying for these awards is 1 March 2009.



# programme details

## taught courses

The School of Social Sciences also runs the Stanley Jevons Postgraduate Loyalty Bursary of £1,500 for Manchester graduates who obtain a First class Honours degree, who are fully self-financing and who are applying for a research-recognised masters degree.

The British Council has some funding support for overseas students, such as one year Chevening Scholarships. Details can be found on the website: [www.britishcouncil.org](http://www.britishcouncil.org)

The Association of Commonwealth Universities has a Scholars Fellowship scheme for Commonwealth citizens – tel +44 (0)20 7380 6702, website – [www.acu.ac.uk](http://www.acu.ac.uk)

For more information on funding, see:

[www.manchester.ac.uk/socialsciences/postgraduate/taught/funding](http://www.manchester.ac.uk/socialsciences/postgraduate/taught/funding)

### Applications

If applying for the PhD or MPhil, please make sure that you include a detailed research proposal.

Overseas students are also required to send an English Language certificate. The minimum scores required are under English Language requirements.

Your completed application package should therefore include the following:

- Completed application form
- Two academic references
- Certificates or transcripts of degree (or equivalent)
- Research proposal (research degrees only)
- English Language certificate, where relevant

If you are unable to send a complete application package, please send what you have available, together with a covering letter explaining what is missing and giving an indication when you will be able to send the outstanding papers.

### English language requirements

Advanced study in Politics requires a good capacity to both read and write English. Our teaching and assessment methods also require a good capacity to communicate orally in English. For these reasons, overseas applicants whose first language is not English should pay particular attention to our language requirements, as follows:

- IELTS – Overall 7, writing score 7
- TOEFL – Overall 623, TWE 5 (PBT)
- TOEFL – Overall 100, with 25 in each of the four sections (IBT)

Applicants with scores below our requirements may be eligible to attend one of our pre-session English courses. Duration will be confirmed when an official result has been received.

Exemption to the requirements is at the discretion of the School. Applicants who have been taught and assessed in English on previous degrees may still be required to show proof of English proficiency via TOEFL/IELTS.

TOEFL Certificates – Please designate The University of Manchester as a recipient of your result. The code is 0757. Results must come directly from ETS (TOEFL).

Test scores are valid for two years.

For further details see:

[www.manchester.ac.uk/socialsciences](http://www.manchester.ac.uk/socialsciences)

### Disabled applicants

Applications from students with additional support needs – eg a disability, medical condition or specific learning difficulty – are considered on the same academic grounds as all other applications.



# facilities and support



As you'd expect from a world-class institution, The University of Manchester provides a wide range of comprehensive support services and facilities. Here is a brief outline – use the web links to find out more.

## Academic Advisory Service

This confidential information and advice service is for anyone with academic worries. Our advisers have excellent knowledge and resources to help you make informed decisions to manage your situation.

tel +44 (0)161 275 3033

email [caas@manchester.ac.uk](mailto:caas@manchester.ac.uk)

[www.manchester.ac.uk/academicadvisoryservice](http://www.manchester.ac.uk/academicadvisoryservice)

## Accommodation

With more than 9,200 rooms, The University of Manchester has more university-owned accommodation than any other university in the country, almost all of which is within two miles of campus. A number of residences are reserved exclusively for postgraduates; in others, every effort is made to room graduate students together.

tel +44 (0)161 275 2888

fax +44 (0)161 275 3213

[www.manchester.ac.uk/accommodation](http://www.manchester.ac.uk/accommodation)

In addition to the University's halls of residence, Manchester has a sizeable stock of private accommodation for rent.

tel +44 (0)161 275 7680

fax +44 (0)161 275 7684

email [manchesterstudenthomes@manchester.ac.uk](mailto:manchesterstudenthomes@manchester.ac.uk)

[www.manchesterstudenthomes.com](http://www.manchesterstudenthomes.com)

## Careers Service

A team of careers professionals who specialise in working with postgraduates offer you personal support, training and development opportunities and extensive careers information. Our Careers Service has

been voted the best in the UK by employers for five consecutive years; recognition for the work we do to ensure leading employers get the chance to meet and recruit our students.

[www.manchester.ac.uk/careers](http://www.manchester.ac.uk/careers)

## Childcare

There are two nurseries close to campus for children aged six months to five years.

tel +44 (0)161 272 7121 (Dryden Street Nursery)

tel +44 (0)161 200 4979 (Echoes Nursery)

[www.manchester.ac.uk/studentexperience/childcare](http://www.manchester.ac.uk/studentexperience/childcare)

## Counselling

Our Counselling Service can help you with any personal problems that may affect your work or wellbeing. All help is free and entirely confidential.

tel +44 (0)161 275 2864

email [counsel.service@manchester.ac.uk](mailto:counsel.service@manchester.ac.uk)

[www.manchester.ac.uk/counselling](http://www.manchester.ac.uk/counselling)

## Cultural facilities

Some of the city's finest cultural venues are right here on the University campus.

Manchester Museum

[www.manchester.ac.uk/museum](http://www.manchester.ac.uk/museum)

Whitworth Art Gallery

[www.manchester.ac.uk/whitworth](http://www.manchester.ac.uk/whitworth)

Contact Theatre

[www.contact-theatre.org](http://www.contact-theatre.org)

Jodrell Bank Observatory and Visitor Centre

[www.manchester.ac.uk/jodrellbank](http://www.manchester.ac.uk/jodrellbank)

'Shopping, bars and the epic architecture of the city's industrial past and vibrant present are all a short walk away...'

*The Guardian University Guide*



[www.manchester.ac.uk](http://www.manchester.ac.uk)

## Disability Support Office (DSO)

If you have additional needs arising from a medical condition, a physical or sensory disability, or a specific learning disability, you are strongly encouraged to contact the University's Disability Support Office to discuss your needs, any arrangements that may be necessary and the extent to which appropriate support is available.

tel +44 (0)161 275 7512

fax +44 (0)161 275 7018

minicom +44 (0)161 275 2794

email [dso@manchester.ac.uk](mailto:dso@manchester.ac.uk)

[www.manchester.ac.uk/dso](http://www.manchester.ac.uk/dso)

## International postgraduates

Around 6,000 students from outside the UK are welcomed into postgraduate study at the University every year, from more than 150 countries. A range of facilities and services are available to make your application and move to Manchester go smoothly, including an in-depth arrival guide, a free airport collection service and an orientation programme.

[www.manchester.ac.uk/international](http://www.manchester.ac.uk/international)

## IT services

IT Services provides staff and students with extensive computing facilities, as well as a variety of services around the campus for postgraduate research staff.

[www.manchester.ac.uk/itservices](http://www.manchester.ac.uk/itservices)

## Library and information services

The John Rylands University Library is one of the best-resourced academic libraries in the UK and is widely recognised as one of the world's great research libraries.

[www.manchester.ac.uk/library](http://www.manchester.ac.uk/library)

## Religious support

There are two chaplaincy centres for the major Christian churches: St Peter's House, for the Anglican, Baptist, Methodist and United Reformed Churches; and Avila House for the Roman Catholic Chaplaincy. Hillel House provides facilities for Jewish worship. There are prayer facilities on campus for Muslim students and student societies for many religions.

## Sport

We have an active Athletic Union, a diverse 'Campus Sport' programme and a huge variety of health, fitness and wellbeing classes, as well as volunteering and scholarship opportunities.

[www.manchester.ac.uk/sport](http://www.manchester.ac.uk/sport)

## Student Services Centre (SSC)

The SSC is where you complete all your administrative transactions with the University – eg issues relating to tuition fees, loans, swipe cards, scholarships and awards, examinations and graduation.

tel +44 (0)161 275 5000

email [ssc@manchester.ac.uk](mailto:ssc@manchester.ac.uk)

[www.manchester.ac.uk/ssc](http://www.manchester.ac.uk/ssc)

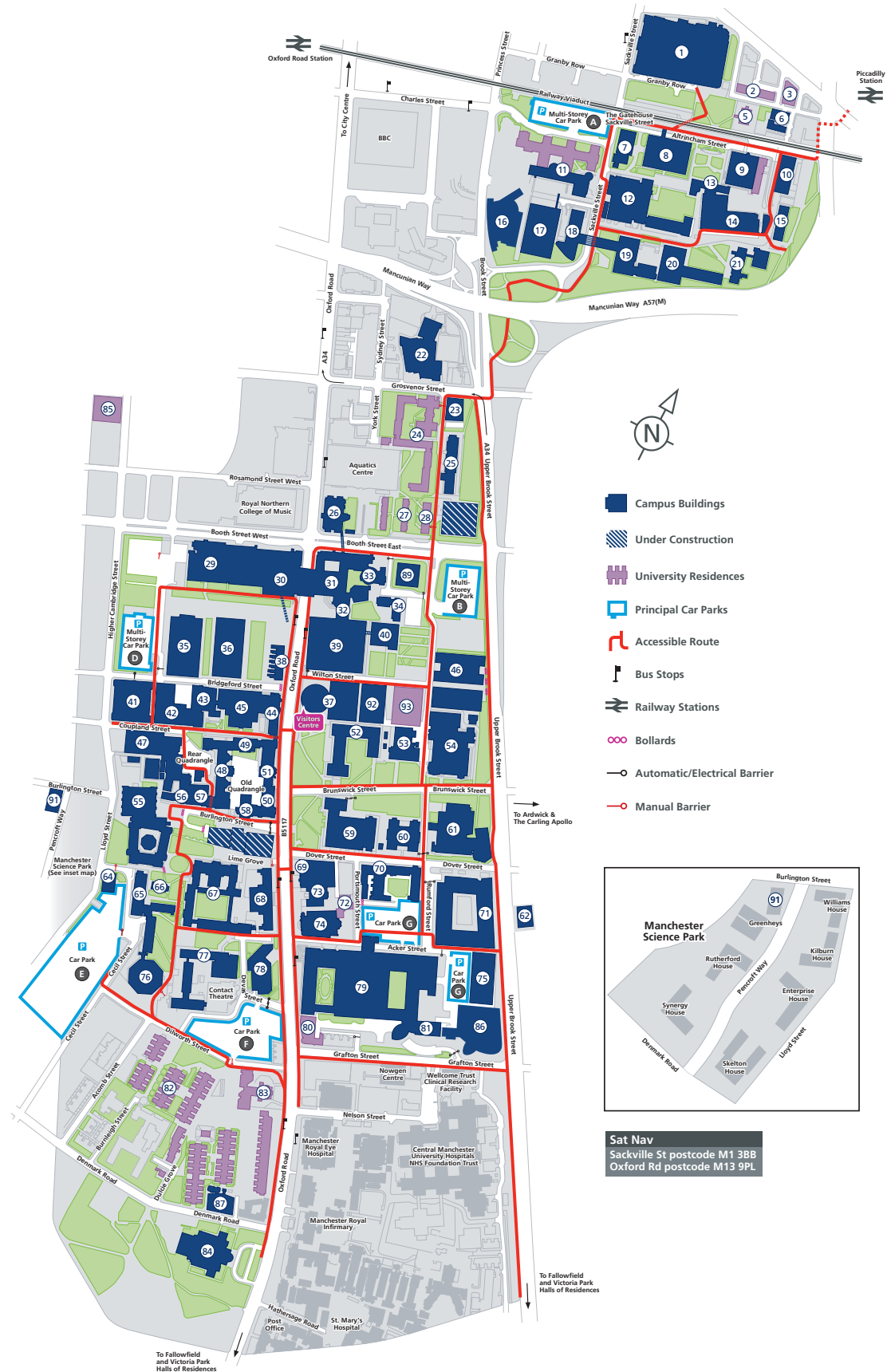
## Students' Union

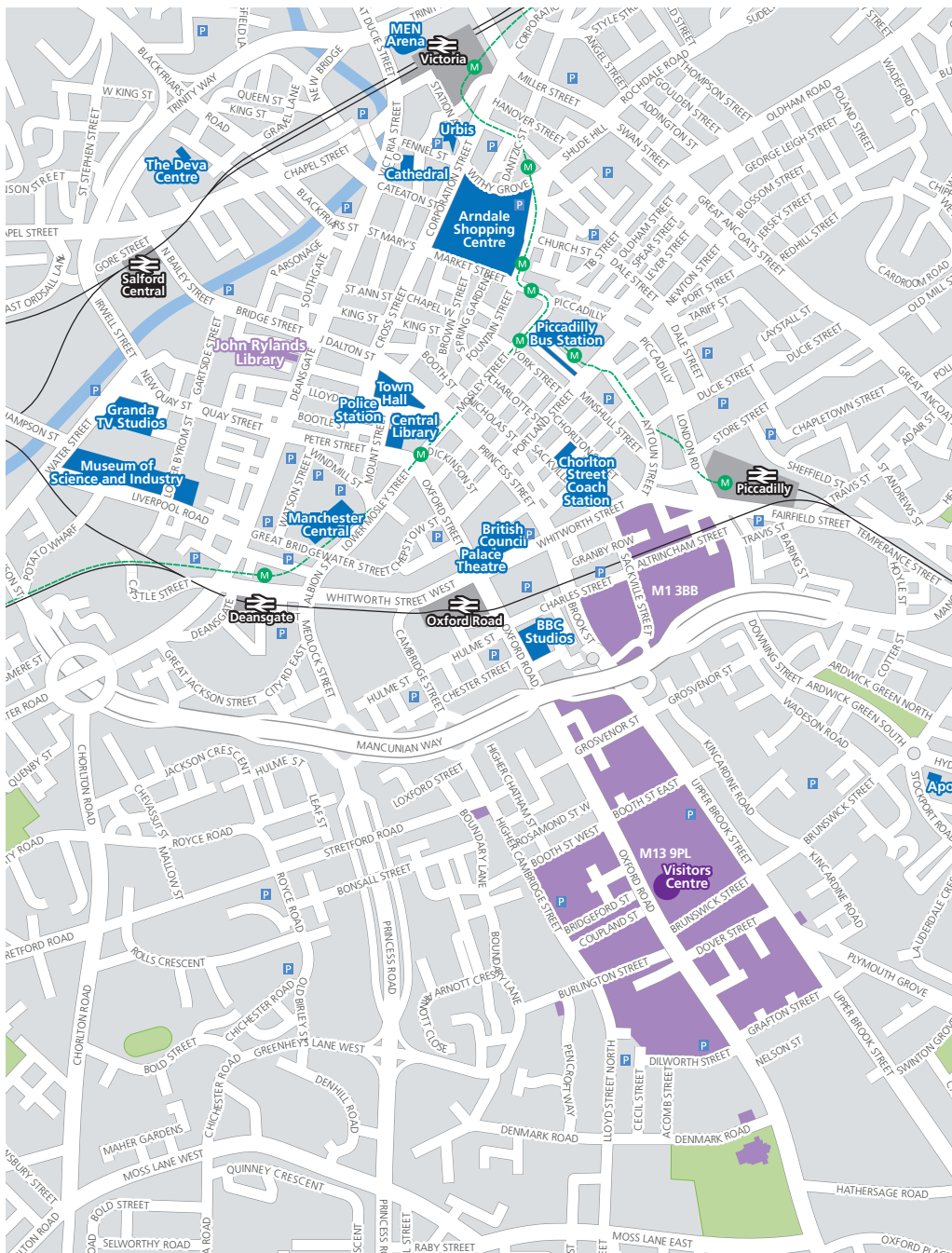
The University of Manchester Students' Union (UMSU) is the largest Students' Union in Europe, offering everything from live bands to student representation. UMSU has some of the largest and most active student societies in the country and complements the University's overall provision of support and welfare services.

[www.umsu.manchester.ac.uk](http://www.umsu.manchester.ac.uk)

# campus map

- |  |   |
|--|---|
| 1 Sackville Street Building  | 45 Rutherford Building  |
| 2 Lambert Hall   | 46 Alan Turing Building   |
| 3 Fairfield Hall   | 47 Coupland Building 3  |
| 5 Chandos Hall   | 48 John Owens Building  |
| 6 Echoes Day Nursery   | 49 Beyer Building   |
| 7 Paper Science Building   | 50 Whitworth Hall   |
| 8 Renold Building  | 51 Whitworth Building   |
| 9 Barnes Wallis Building / Students' Union / Wright Robinson Hall          | 52 Williamson Building  |
| 10 Vision Centre / Moffat Building   | 53 Roscoe Building  |
| 11 The Manchester Conference Centre and Weston Hall                        | 54 Schuster Building  |
| 12 Pariser Building  | 55 The John Rylands Library   |
| 13 Staff House Sackville Street  | 56 Schunck Building / Burlington Rooms  |
| 14 The Mill  | 57 Student Services Centre  |
| 15 Morton Laboratory   | 58 Christie Building  |
| 16 Manchester Interdisciplinary Biocentre - John Garside Building          | 59 Simon Building   |
| 17 George Begg Building  | 60 Zochonis Building  |
| 18 Faraday Tower   | 61 Chemistry Building   |
| 19 Faraday Building  | 62 Dryden Street Nursery  |
| 20 Ferranti Building   | 64 Environmental Services Unit  |
| 21 Maths and Social Sciences Building                                      | 65 Mansfield Cooper Building  |
| 22 Sugden Sports Centre  | 66 Stephen Joseph Studio  |
| 23 Oddfellows Hall   | 67 Samuel Alexander Building  |
| 24 Grosvenor Halls of Residences   | 68 Students' Union Oxford Road (also at number 9)                             |
| 25 Materials Science Centre  | 69 William Kay House  |
| 26 Manchester Business School East   | 70 Dover Street Building  |
| 27 Bowden Court  | 71 Michael Smith Building   |
| 28 Ronson Hall   | 72 Vaughan House  |
| 29 Manchester Business School West   | 73 Avila House RC Chaplaincy  |
| 30 Precinct Shopping Centre<br>Harold Hankins Building<br>Devonshire House | 74 Holy Name Church   |
| 31 Crawford House  | 75 AV Hill Building   |
| 32 St Peters House/Chaplaincy  | 76 AQA  |
| 33 Crawford House Lecture Theatres   | 77 Ellen Wilkinson Building   |
| 34 Prospect House  | 78 The Academy  |
| 35 Humanities Bridgeford Street  | 79 Stopford Building  |
| 36 Arthur Lewis Building   | 80 Horniman House   |
| 37 University Place  | 81 The Manchester Incubator Building  |
| 38 Waterloo Place  | 82 Whitworth Park Halls of Residence  |
| 39 Kilburn Building  | 83 Grove House  |
| 40 Information Technology Building   | 84 The Whitworth Art Gallery  |
| 41 Dental School and Hospital  | 85 Opal Hall  |
| 42 Martin Harris Centre for Music and Drama                                | 86 Core Technology Facility   |
| 43 Coupland Building 1   | 87 Denmark Building   |
| 44 The Manchester Museum   | 89 Lamb Building  |
|  | 91 McDougall Centre   |
|  | 92 Jean McFarlane Building (formerly 37b)                                     |
|  | 93 George Kenyon Building and Hall of Residence and PC cluster (formerly 37a) |





## how to apply      contact details

Our preferred method of application for all postgraduate programmes is via our online application form:

[www.manchester.ac.uk/pgapplication](http://www.manchester.ac.uk/pgapplication)

If you are unable to apply online and require a printed application form, contact the Postgraduate Admissions Office:

tel +44 (0)161 275 4740  
 email [pg-admissions@manchester.ac.uk](mailto:pg-admissions@manchester.ac.uk)  
 (remember to include your postal address)

### address

Postgraduate Admissions Office  
 School of Social Sciences  
 Arthur Lewis Building  
 The University of Manchester  
 Oxford Road  
 Manchester  
 M13 9PL  
 United Kingdom

tel +44 (0)161 275 1296  
 (taught course enquiries)

tel +44 (0)161 275 4743  
 (research programme enquiries)

fax +44 (0)161 275 0000

email [pg-soss@manchester.ac.uk](mailto:pg-soss@manchester.ac.uk)  
 website [www.manchester.ac.uk/socialsciences/politics](http://www.manchester.ac.uk/socialsciences/politics)

### Disclaimer

This brochure is prepared well in advance of the academic year to which it relates. Consequently, details of programmes may vary with staff changes. The University therefore reserves the right to make such alterations to programmes as are found to be necessary. If the University makes an offer of a place, it is essential that you are aware of the current terms on which the offer is based. If you are in any doubt, please feel free to ask for confirmation of the precise position for the year in question, before you accept the offer.

### From Piccadilly Gardens Bus Station

(a short walk from Piccadilly Rail Station), take buses 40, 41, 42, 43, 44, 45, 46, 142, 143, 149, 249, 157, W2, or 11. Ask for The University of Manchester Precinct Centre.

### From Victoria Rail Station

Either take the Metrolink tram, or walk to Piccadilly Gardens Bus Station (not the Rail Station) and follow the directions above.

### Parking

Please note that parking near the School is available in several car parks on campus and in a new multi-storey car park.

School of Social Sciences  
Arthur Lewis Building  
The University of Manchester  
Oxford Road  
Manchester  
M13 9PL  
United Kingdom

tel +44 (0)161 275 1296 (taught course enquiries)  
tel +44 (0)161 275 4743 (research programme enquiries)  
fax +44 (0)161 275 0000  
email [pg-soss@manchester.ac.uk](mailto:pg-soss@manchester.ac.uk)  
[www.manchester.ac.uk/socialsciences/politics](http://www.manchester.ac.uk/socialsciences/politics)

Royal Charter Number RC000797  
Jxxxx 11.09

