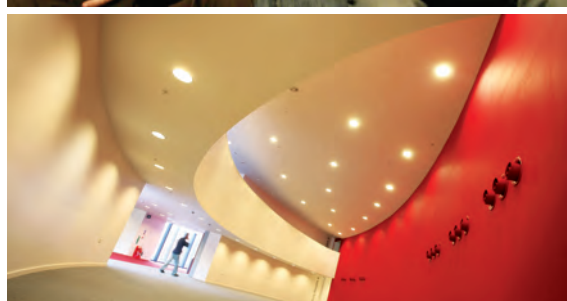


# Social Statistics



'Research here has a pedigree of its own...'

*The Virgin Alternative Guide to British Universities*



### The University of Manchester...

- carries out research in a wider range of academic areas than any other UK university
- attracted around £266 million in research funding in the last year
- has more than 5,800 academic and research staff
- has completed the largest and most ambitious buildings and investment programme ever seen in British higher education – more than £400 million to date and a further £250 million by 2015
- has one of the largest and best resourced academic libraries in the country
- has a careers service that has been voted the best in the UK for five consecutive years
- is the most targeted university by the UK's top 100 graduate employers
- enjoys the best of both worlds: city life and campus community

There has never been a better time to be part of The University of Manchester. Choose to be a postgraduate student here and you can join us in achieving our ambitious goals for the future.

The University of Manchester	2
Social Statistics at Manchester	6
facilities and support	16
campus map	18
city map	20
how to apply	21
contact details	21

# The University of Manchester



www.manchester.ac.uk

Come and join one of Britain's most famous and forward-thinking universities, with a rich heritage stretching back 180 years and an exciting agenda for the future...

The birth of the computer, the splitting of the atom, the founding principles of modern economics – these and many more world-altering innovations have their roots at The University of Manchester. Today, our international research centres produce answers to global problems that truly change lives.

Famous for cutting-edge innovation and based in one of the world's most exciting student cities, The University of Manchester offers you excellent prospects. Our aim to become one of the world's top 25 universities – attracting the best tutors, researchers, students and reputation – is backed by British higher education's most ambitious capital building programme, an investment of more than £650 million by 2015.

## Research, discovery and innovation

The 2008 Research Assessment Exercise placed us third in the UK in terms of "research power" and assessed virtually all of our research as reaching international or national standards of excellence. We research in a wider range of areas than any other UK university, and are continuing to increase our number of first-rate professorships, improve our strong links to industry and public services, and invest in world-class facilities.

Whether studying for a taught or research postgraduate degree, you'll be directly involved with groundbreaking research, encouraged to adopt innovative approaches and discover interdisciplinary ways of working that open up exciting new areas of discovery.

## Turning knowledge into enterprise

Your postgraduate work could contribute towards business and economic development outside academia. Manchester has an impressive track record of turning ideas into commercial reality, attracting

world-class academics by providing a dynamic, first-class support system for them to participate and succeed in commercialisation projects. More than 100 'spin-out' companies have been created in recent years based on our current research.

## Career opportunities

As a Manchester graduate you will be in good company: 23 Nobel Prize winners have worked or studied here, and our alumni have an impressive track record of becoming leaders in their fields, from philosopher Wittgenstein to women's rights campaigner Christabel Pankhurst, and from Sir Terry Leahy, Chief Executive of Tesco, to George Richards, President of Trinidad and Tobago.

More than 4,000 recruiters each year from countries around the globe target our graduates. Consistently voted the best in the UK by employers, our Careers Service offers diverse practical, innovative services and events – many exclusively for postgraduates – to make you more employable.

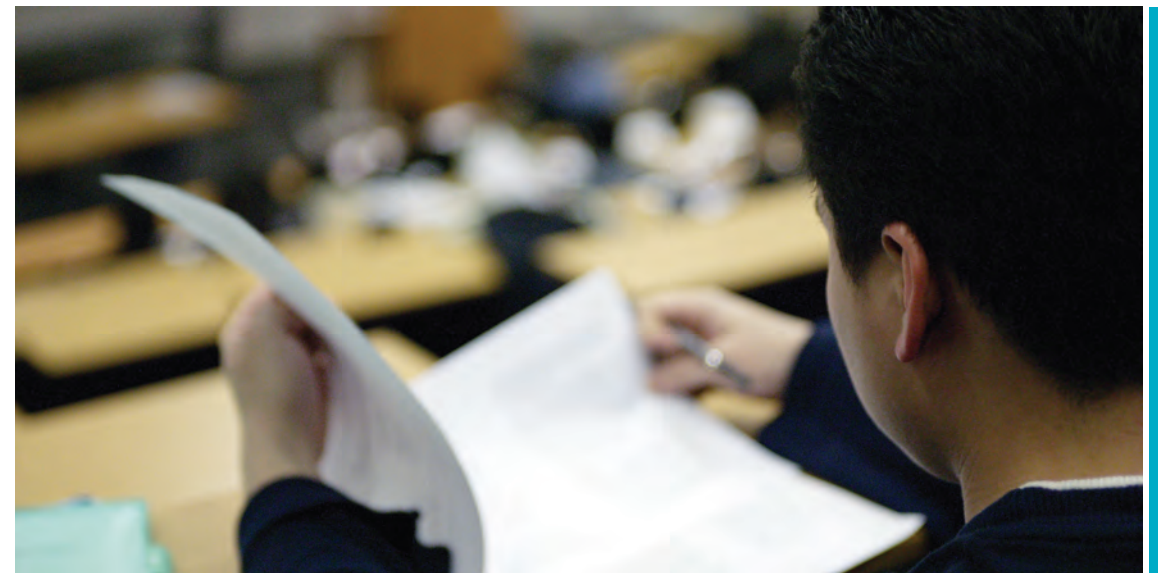
## Cosmopolitan campus

One of the UK's largest and best-resourced academic libraries, premier IT services and extensive student support services are all on our campus, along with impressive sports facilities, restaurants, bars, cafés and a shopping centre. Campus-based cultural attractions include The Manchester Museum, Whitworth Art Gallery and Contact Theatre, with the University's Jodrell Bank Observatory based further afield in Macclesfield. Europe's largest Students' Union provides excellent support services, hundreds of active student societies and four live venues, including the famous Academy, attracting the best big name and upcoming bands.



The University of Manchester

# Social Statistics at Manchester



The School of Social Sciences at The University of Manchester hosts an expanding graduate programme in social statistics, comprising the MSc and PGDip in Social Research Methods and Statistics and a thriving PhD programme. Our research, along with colleagues in Sociology, was rated joint first in the 2008 Research Assessment Exercise, with the highest proportion of research judged to be “world leading” of any UK higher education institution.

Social Statistics is a new discipline area, set up as part of The University of Manchester’s commitment to develop the study of social statistics as a key component of our School of Social Sciences. Our graduate programme is located within not only the discipline of Social Statistics, but also the Cathie Marsh Centre for Census and Survey Research, and the Institute of Social Change.

## The Cathie Marsh Centre for Census and Survey Research (CCSR)

This internationally recognised, interdisciplinary centre of research excellence boasts teaching staff who are all research-active in their fields of expertise. There is a strong connection between CCSR and Social Statistics, reflecting our commitment to integrated research and teaching activities; nearly all academic staff from CCSR are formally located within this discipline.

## The Institute for Social Change (ISC)

Some Social Statistics staff are located within the Institute for Social Change, an interdisciplinary research institute that examines the causes and consequences of social change in a comparative perspective. ISC is host to a major, five-year research programme in collaboration with Harvard University entitled ‘Social Change, a Harvard-Manchester Initiative’, directed by Harvard Scholar and Manchester Visiting Professor Robert Putnam. ISC runs a masters course that shares several course units with Social Research Methods and Statistics.

## Research areas

Our research is broadly characterised by the application of advanced quantitative methods in an interdisciplinary social science context. All academic staff belong to one or more research groups that reflect the particular range of interests:

- Social Statistics Research Group (SSRG)
- Confidentiality and Privacy (CAPRI)
- Population, Ethnicity, Religion and Migration (PERM)
- Spatial Estimation and Analysis Group (SEAG)
- Work and Employment Research Group (WERG)
- Social Network Analysis (SNA)

For more details on our research groups and information about our current research projects, see:

[www.ccsr.ac.uk/research](http://www.ccsr.ac.uk/research)

Postgraduate students are fully integrated into these research groups, which help provide a supportive and stimulating environment for study, and offer you many opportunities to get involved in more collaborative activities with other research students and staff.

In addition to the research groups, CCSR hosts the Economic and Social Data Service (ESDS Government), providing research-based development and support for academic users of the large-scale government datasets. The Centre also hosts the 1991 and 2001 Samples of Anonymised Records (SARs), from the UK census, and is a partner in the National Centre for e-Social Science.

## Postgraduate study

Postgraduate study is supported under the graduate course in Social Research Methods and Statistics comprising both taught (MSc and PGDip) and research (PhD and MPhil) degrees.

The graduate programme is recognised by the Economic and Social Research Council (ESRC) and home students are able to apply for ESRC studentships (EU students can apply on a fees-only basis) to study either for 1+3 (MSc in Social Research Methods and Statistics, followed by a three-year PhD programme), or +3 (three-year PhD programme). See ‘Financial Support’ for more details. Our research students are provided with excellent facilities alongside academic staff.

## Career prospects

There is an increasing need for well-trained social scientists who can apply advanced methods of analysis to complex data. Graduates of our Social Research Methods and Statistics course are in a good position to obtain jobs in central government, including the Office for National Statistics (ONS), the academic sector, local government and within the commercial research sector. CCSR and Social Statistics have excellent links with ONS and government departments such as the Department for Children, Schools and Families (DCSF), local authorities and many commercial organisations, and are thus well placed to assist students in finding jobs.

A number of our students already hold research positions (typically in local government, or overseas) and take the MSc as part of career development programmes. The SRMS course is also ideal preparation if you wish to pursue doctoral study, and is a formal component of our 1+3 PhD training model. Typically, CCSR/Social Statistics has between five and eight funded PhD studentships per year with many of those studentships taken up by graduates of the SRMS masters course.

# programme details

## taught courses

### MSc and PGDip in Social Research Methods and Statistics (SRMS)

**Duration: One year full-time, two years part-time**

The SRMS course provides a thorough grounding in advanced quantitative methods, taught within an applied social science framework. While the training focuses on advanced quantitative methods, the course is designed to be accessible to students coming from a broad range of disciplinary backgrounds and with varying levels of prior statistical knowledge.

The course may be studied as either an MSc or a postgraduate diploma.

#### Course outline

All students take eight course units totalling 120 credits (15 credits each) over the year. Units include:

- Methodology and Research Design
- Introduction to Statistical Modelling
- Statistical Foundations
- Qualitative Research Methods
- Survey Research
- Multilevel Models
- Longitudinal Data Analysis
- Advanced Survey Methods
- Social Network Analysis
- Demographic Analysis
- Systematic Mixed Methods Research

Finally, all students proceeding to MSc must complete a research dissertation of up to 15,000 words. Those on the PGDip may upgrade to the full MSc, subject to satisfactory course performance.

### MSc and PGDip in Social Change

**Duration: One year full-time, two years part-time**

This course was developed as part of a collaborative research initiative with Harvard University on the themes of social, political, ethnic and religious change in contemporary society. As well as addressing theoretical accounts for the causes and consequences of the ongoing major changes to our social fabric, you will learn the research and analysis skills to critically assess the evidence cited in support of these theories, using both qualitative and quantitative empirical methods.

The MSc in Social Change is suitable for students with an interest in broad, fundamental social science issues, who would like to learn empirical research skills to critically evaluate competing accounts.

The course is ideal preparation for students wishing to apply for the fully funded PhD studentships in Social Change offered by the Institute for Social Change.

#### Course outline

You will complete several course units from SRMS (above), as well as:

- Social Capital and Social Change
- Religious and Ethnic Change
- Comparative Citizen Politics

MSc students also complete a research dissertation on a topic related to social change. PGDip students may upgrade to an MSc subject to satisfactory course performance.

### Taught course entry requirements

**Direct entry onto the MSc:** A degree qualification equivalent to an Upper Second class Honours in a social science subject.

**Entry onto the PGDip:** A degree equivalent to a Lower Second class Honours in a social science subject.

#### English language requirements

If your first language is not English, you must attain one of the following:

- IELTS – Overall 7, writing score 7
- TOEFL – Overall 623, TWE 5 (PBT)
- TOEFL – Overall 100, with 25 in each of the four sections (IBT)

Applicants with scores below our requirements may be eligible to attend one of our pre-sessional English courses. Duration will be confirmed when an official result has been received.

Exemption to the requirements is at the discretion of the School. Applicants who have been taught and assessed in English on previous degrees may still be required to show proof of English proficiency via TOEFL/IELTS.

TOEFL Certificates – Please designate The University of Manchester as a recipient of your result. The code is 0757. Results must come directly from ETS (TOEFL).

Test scores are valid for two years.

### Contact details

**For the MSc in Social Research Methods and Statistics:**

Dr Nikos Tzavidis  
Postgraduate Teaching Director  
Social Statistics  
The University of Manchester  
Manchester  
M13 9PL

email [nikos.tzavidis@manchester.ac.uk](mailto:nikos.tzavidis@manchester.ac.uk)

Or visit our website: [www.ccsr.ac.uk/masters](http://www.ccsr.ac.uk/masters)

**For the MSc in Social Change:**

Dr Nick Shryane  
Postgraduate Teaching Director  
Institute for Social Change  
The University of Manchester  
Manchester  
M13 9PL  
email [nick.shryane@manchester.ac.uk](mailto:nick.shryane@manchester.ac.uk)



# programme details

## research programmes

### PhD and MPhil in Social Research Methods and Statistics (SRMS)

#### Duration

**PhD:** Usually three years full-time, six years part-time. At the end of the first year, you must have made satisfactory progress and passed all required courses before continuing on to the second year.

**MPhil:** Usually one year full-time, two years part-time.

#### Entry requirements

You must have acquired a thorough training in research methods before undertaking research. Ideally, this would be a masters degree with an approved research training package, such as the MSc in Social Research Methods and Statistics.

If you lack any research training, you will be encouraged to take the MSc in SRMS as part of a 1+3 model for PhD study (a one-year masters followed by three years research). Those with some research methods training will undertake a customised programme of research training during their first year of study, comprising some or all elements from the MSc course.

If your first language is not English, you must also meet the University requirements on English language proficiency.

#### Research topics

Social Statistics and CCSR welcome applications for postgraduate research in a range of topic areas related to our research, as described earlier in this brochure, and under 'staff research interests' in the following pages.

If you do not have a clear research proposal in mind, our website provides details of project proposals and ideas that staff within Social Statistics would be keen to supervise.

#### Research training

As indicated above, the amount of training will depend on you. You will have access to taught course units in research design and methods via our graduate programme in Social Research Methods and Statistics. With some of our training provided through short one-day courses, the programme offers considerable flexibility to meet the contrasting needs of PhD students.

As a PhD student in Social Statistics, or CCSR, you will also have free access to graduate courses across the Faculty of Humanities.

#### Supervisory arrangements

We provide high quality supervision from experts in their fields. You will receive joint supervision with supervisors chosen to provide complementary expertise in the area of study and methodology used. Where appropriate, we operate a system of joint supervision with academics from other disciplines (eg we currently have joint supervision arrangements with The Brooks World Poverty Institute, Mathematics, Politics, Sociology and Economics), to ensure appropriate expertise is provided. Supervision arrangements will vary in detail, but the following provides a general guideline.

- At the start of the programme, you and your supervisors will agree a programme of work, including training provision.
- You will have regular supervision meetings, the length and frequency of which may vary according to the needs of ongoing work and stage of your PhD; but we generally expect to hold fortnightly meetings, with written work submitted beforehand for discussion.
- Supervisors are generally your first port of call for all academic-related matters.
- The collegial working environment, with students integrated within research groups, helps ensure that support and advice is more widely available from staff and student colleagues.

#### Seminar presentations

You are expected to make seminar presentations as part of the weekly lunchtime seminar series. This is an excellent opportunity to share your research progress with colleagues, gain useful feedback and develop your presentation skills. Giving a seminar is also valuable preparation for presenting papers at conferences, which you will be encouraged to do after your first year.

#### Financial support

We have a strong record of securing funding for PhD students and are happy to provide support for writing proposals for funding applications.

#### Funded studentships

The ESRC is the major UK funding source for postgraduate students in the social sciences. Social Statistics/CCSR is one of a select group of outlets that receives ESRC 1+3 awards under a quota system. We also have a successful record in obtaining CASE awards and receive additional studentship funding from the School. This enabled us to award five full-time funded studentships for starts in September 2009, and we will have at least six in 2010.

ESRC Research Studentships for PhD study (1+3 and +3) cover the cost of tuition fees and pay a stipend for home doctoral students (fees-only for students from the EU). As part of the ESRC's strategy to support the development of quantitative methods, those undertaking advanced quantitative training as part of their PhD programme are eligible to apply for an additional supplement added to their stipend. Students who have already completed a research methods training programme that has been recognised by the ESRC would apply for +3 funding (three years of research). Students who wish to undertake our MSc Social Research Methods and Statistics and then proceed to PhD studies would apply for 1+3 funding (MSc training year and three years of research).

For full details on ESRC funding, consult the ESRC website:

[www.esrc.ac.uk](http://www.esrc.ac.uk)

To be considered for funding, you must apply for a place on the PhD programme and return the School of Social Sciences Funding Application Form by 1 March. The form is available online:

[www.manchester.ac.uk/socialsciences/postgraduate/research/funding](http://www.manchester.ac.uk/socialsciences/postgraduate/research/funding)

#### Other funding sources

Latest details of University and other funding sources for postgraduate study (for both home and overseas students) are available online:

[www.manchester.ac.uk/postgraduate/funding](http://www.manchester.ac.uk/postgraduate/funding)

### PhD in Social Change

The Institute for Social Change (ISC) welcomes applications for postgraduate research in topic areas related to social, political, religious and ethnic changes to contemporary societies, particularly research with a comparative element. If you do not have a clear research proposal in mind, our website provides details of our research projects and the sorts of topics staff within ISC would be keen to supervise.

#### Funded studentships

ISC provides up to three fully funded studentships per year. These studentships cover the cost of tuition fees and pay a stipend to cover living expenses. These studentships are available for UK/EU and overseas students on an equal basis.

For full details on these studentships, see the ISC website:

[www.manchester.ac.uk/socialchange/postgraduate](http://www.manchester.ac.uk/socialchange/postgraduate)

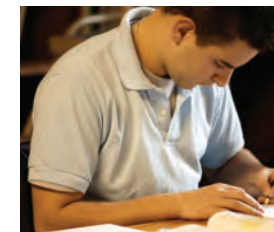
### Contact details

#### For the postgraduate research programme in Social Research Methods and Statistics:

Dr Mark Elliot  
Postgraduate Research Director  
Social Statistics  
The University of Manchester  
Oxford Road  
Manchester  
M13 9PL  
email [mark.elliott@manchester.ac.uk](mailto:mark.elliott@manchester.ac.uk)  
Or visit our website: [www.ccsr.ac.uk/phd](http://www.ccsr.ac.uk/phd)

#### For the Social Change postgraduate research programme:

Dr Dave Cutts  
Postgraduate Research Director  
The Institute for Social Change  
The University of Manchester  
Oxford Road  
Manchester  
M13 9PL  
email [david.cutts@manchester.ac.uk](mailto:david.cutts@manchester.ac.uk)



# staff research interests



## Dr Mark Brown

Teaching Fellow  
email mark.brown@manchester.ac.uk  
tel +44 (0)161 275 4780

Mark Brown joined CCSR in 1996 and has been key in driving forward its teaching and learning programme. Main research interests are demographic transition, and demography of ethnic minority populations.

Recent publications:

- Brown, M (2007) When Ancient meets modern: the relationship between postpartum non-susceptibility and contraception in Sub-Saharan Africa. *Journal of Biosocial Science*. 39(4): 493-515
- Gardiner, C and Brown, M (2004) Informing Policy Making at sub-local authority spatial levels: using Small Area Microdata from the 2001 Census. *Local Government Studies* 30(1): 74-87
- Simpson, L and Brown, M (2008) Census fieldwork – the bedrock for a decade of social analysis. *Environment and Planning*. A. 40(9): 2132 – 2148

## Dr Dave Cutts

Postgraduate Research Director, Institute for Social Change  
email david.cutts@manchester.ac.uk  
tel +44 (0)161 275 0276

Dave is interested in various aspects of elections and methodology, including: geographical and contextual effects in voting and attitudes; modelling voter preferences and behaviour; political engagement and participation; the Liberal Democrats in the UK; comparative studies of voter turnout; measuring area level effects using ecological and survey data; and multilevel modelling.

Selected publications:

- Fieldhouse, E, Cutts, D and Russell, A (2006) Neither North nor South: the Liberal Democrat performance in the 2005 General Election. *Journal of Elections, Public Opinion and Parties* 16(1).
- Cutts, D, and Shryane, N (2006) Did Local Activism Really Matter? *Liberal Democrat Campaigning at the 2001 British General Election*. *British Journal of Politics and International Relations*, 8(3).
- Cutts, D (2006) 'Where we work we win': A Case study of Local Liberal Democrat Campaigning. *Journal of Elections and Public Opinion*, 16(3).

## Professor Angela Dale

Director of CCSR  
email angela.dale@manchester.ac.uk  
tel +44 (0)161 275 4876

Angela Dale is Professor of Quantitative Social Research at CCSR, where she was founding director; a role that she resumed this year. She became Director of the ESRC Research Methods Programme in 2002. She also heads one of the 'value-added' arms of the new Economic and Social Data Service – that responsible for large-scale government surveys. She is an Academician of the Academy of Learned Societies for the Social Sciences (AcSS) and was awarded an OBE for services to social science in the 2006 New Year Honours List.

Research interests include: women's employment, with particular respect to ethnic differences and strategies for combining work and family life; the role of qualifications in women's careers; household formation, change and diversity; secondary analysis of survey and census microdata; and issues around data release.

Recent publications:

- Dale, A (2006) Quality issues with survey research. *International Journal of Social Research Methodology* 9(2): 143-158
- Dale, A, Lindley, J and Dex, S (2006) Ethnic differences in women's employment: the changing role of qualifications. *Oxford Economic Papers* 58(2): 351-378
- Dale, A (2005) Combining family and employment: evidence from Pakistani and Bangladeshi Women. *Work-Life Balance in the 21st Century*. Houston, D, Palgrave Macmillan

## Dr Mark Elliot

Senior Research Fellow and Postgraduate Research Programme Director  
email mark.elliott@manchester.ac.uk  
tel +44 (0)161 275 4257

Mark Elliot joined CCSR in 1996 and was director from 2005 to 2008. He is a leading international researcher in the field of statistical disclosure. He has frequent invitations to speak at international conferences on confidentiality and privacy and is consultant to many national statistical agencies, including the Office for National Statistics in the UK, US Bureau of the Census, the Australian Bureau of Statistics and Statistics New Zealand. Dr Elliot's work on Data Intrusion Simulation and Special Uniqueness is regarded as seminal within the disclosure control field.

Apart from confidentiality and privacy, his main research interests are relationships and relationship structures, and data linkage.

Recent publications:

- Smith, D and Elliot, MJ (2008) A Measure of Disclosure Risk for Tables of Counts. *Transactions in Data Privacy* 1: 1-17
- Elliot, MJ, Purdam, K and Smith, D (2008) Statistical Disclosure Control Architectures for Patient Records in Biomedical Information Systems. *The Journal of Biomedical Informatics* 41: 58-64
- Purdam K and Elliot, MJ (2007) A Case Study of the Impact of Statistical Disclosure Control on Data Quality in the Individual UK Samples of Anonymised Records. *Environment and Planning A*. 39(5): 1101-1118

## Professor Ed Fieldhouse

Professor of Social and Political Science  
email ed.fieldhouse@manchester.ac.uk  
tel +44 (0)161 275 7439

Ed Fieldhouse is currently Director of the Institute for Social Change. He joined The University of Manchester in 1993 and has worked in various areas of quantitative social research since completing a PhD at the University of Sheffield in 1992. Having previously held posts at the Universities of Sheffield and Nottingham, he joined CCSR as a research officer supporting the dissemination of the Samples of Anonymised Records (SARs). Since then, he has held positions as an ESRC research fellow, working on the changing geography of unemployment and as a research analyst in the Chief Executive's department of Oldham Metropolitan Borough Council. He was appointed Deputy Director of CCSR in June 1999 and was Director from September 2002 until September 2005.

Recent publications:

- Fieldhouse, E and Cutts, D (2008) Mobilisation or Marginalisation? Neighbourhood Effects on Muslim Electoral Registration in Britain in 2001. *Political Studies* 56: 333-354
- Fieldhouse E, Shryane, N and Pickles, A (2007) Strategic voting and constituency context: modelling party preference and vote in multiparty elections. *Political Geography* 26: 159 - 178
- Russell, A and Fieldhouse, E (2005) Neither Left nor Right? The Liberal Democrats and the Electorate. Manchester University Press

## Dr Rob Ford

Research Fellow  
email rob.ford@manchester.ac.uk  
tel +44 (0)161 306 6951

Rob Ford joined CCSR in 2007. He was previously employed by Oxford University as a lecturer in politics and by the BBC as a consultant during several elections. His research interests include: racial attitudes; inter-group relations; public opinion research; and electoral politics.

Recent publications:

- Ford, R (2006) Prejudice and white majority welfare attitudes in the UK. *Journal of Elections, Public Opinion and Parties* 16 (2): 141-56
- Ford, R (2008) Is racial prejudice declining in Britain? *British Journal of Sociology* 59(4): 609-636
- Cheeseman, N and Ford, R (2007) Ethnicity as a political cleavage. *Institute for Democracy in South Africa, Afrobarometer Working Papers* no 83

## Dr Vanessa Gash

Research Fellow  
email vanessa.gash@manchester.ac.uk  
tel +44 (0)161 275 0271

Vanessa Gash joined CCSR in 2007, after a spell in the University's Sociology Department. Before 2006, she worked at the Max Planck Institute for Human Development in Berlin, the Economic and Social Research Institute (ESRI) in Dublin, the SFI in Copenhagen, and the Laboratoire de Sociologie Quantitative (LSQ) in Paris. Her research interests are in comparative European labour market research with an emphasis on the employment conditions and market outcomes of part-time and temporary workers.

Recent publications:

- Gash, V (2008) Bridge or trap? To what extent do temporary workers make more transitions to unemployment than to the standard employment contract? *European Sociological Review* 24(5). Online doi: 10.1093/esr/jcn027
- Gash, V, Mertens, A and Romeu-Gordo, L (2007) Are Fixed-Term Jobs Bad for your Health? A Comparison of Spain and Germany. *European Societies*. 9(3): 429-458
- Gash, V and McGinnity, F (2007) Fixed-term Contracts – the new European inequality? Comparing West Germany and France. *Socio-Economic Review*. 5(3): 467-496

# programme details

## research programmes



### Professor Yaojun Li

Professor of Social Change and ISC Postgraduate Taught Programme Director  
email yaojun.li@manchester.ac.uk  
tel +44 (0)161 275 0274

Yaojun Li joined the Institute for Social Change in April 2007. He had worked as a lecturer in English and Linguistics at Fudan University in Shanghai, China, for five years, before coming to Oxford University in 1992 to do firstly an MPhil at St Anthony's, and then a DPhil at Nuffield, both in Sociology. His current ESRC project on the labour market position of the minority ethnic groups in Britain, with Professor Anthony Heath as co-applicant, has attracted considerable academic and media attention. As a quantitative sociologist, his main interest is in social stratification, social capital, ethnicity and cross-national comparisons. He supervises PhD students on a wide range of research themes and would welcome prospective students committed to quantitative sociological research.

#### Recent publications:

- Li, Y and Heath, A (2008) Ethnic minority men in British labour market (1972-2005), *International Journal of Sociology and Social Policy* 28 (5/6): 231-244
- Li, Y and Marsh, D (2008) New forms of political participation: searching for Expert Citizens and Everyday Makers. *British Journal of Political Science* 37: 247-272
- Li, Y, Savage, M and Warde, A (2008) Social mobility and social capital in contemporary Britain. *British Journal of Sociology* 59(3): 391-411

### Dr Wendy Olsen

Senior Lecturer  
email wendy.olsen@manchester.ac.uk  
tel +44 (0)161 275 3043

Wendy Olsen joined CCSR in 2002. She holds a joint appointment with the School of Environment and Development. Wendy's research currently focuses on labour relations in different country contexts. The country case research she has conducted includes India, Sri Lanka, Ghana and the UK. Her doctoral students have also done research in Ecuador, Nigeria, Mozambique, and Bangladesh. Her Indian research covers poor people's labouring strategies and livelihoods, as well as unfree labour and coercion. Her UK research includes the gender pay gap, women returning to work, self-employment and a growing interest in the ethics of employment policy.

#### Recent publications:

- Tomlinson, J, Olsen, W and Purdam, K (2008) Occupational gender segregation, over-qualification and part-time work: an exploration of the situation of women returners in the UK. *European Sociological Review*
- Cheng, S, Olsen, W, Southerton, D, and Warde, A (2007) The Changing Practice of Eating: Evidence from UK Time Diaries, 1975 and 2000. *British Journal of Sociology* 58(1): 39-61
- Olsen, WK (2007) Pluralist Methodology for Development Economics: The Example of Moral Economy of Indian Labour Markets. *Journal of Economic Methodology* 14(1): 57-82

### Professor Ian Plewis

Professor of Social Statistics and Head of Social Statistics  
email ian.plewis@manchester.ac.uk  
tel +44 (0)161 306 6952

Ian Plewis joined CCSR as Professor of Social Statistics in September 2007, having previously worked at the Centre for Longitudinal Studies, Institute of Education, University of London since 1999, where he was Professor of Longitudinal Research Methods in Education. He is currently Chair of the Social Statistics Section of the Royal Statistical Society and is a Fellow of the Centre for Multilevel Modelling, University of Bristol.

His research interests include: the design and analysis of longitudinal studies; multilevel modelling as applied to longitudinal data; non-response, missing data and measurement error; educational inequalities.

#### Recent publications:

- Plewis, I (2009) Statistical modelling for structured longitudinal designs. In Lynn, P (ed.) *Methodology of Longitudinal Surveys*. Chichester: John Wiley.
- Plewis, I, Ketende, SC, Joshi, H and Hughes, G (2008) The contribution of residential mobility to sample loss in a birth cohort study: Evidence from the first two waves of the Millennium Cohort Study. *Journal of Official Statistics*, 24, 365-385.
- Plewis, I and Kallis, C (2008), Changing economic circumstances in childhood and their effects on subsequent educational and other outcomes. DWP Working paper no. 49

### Dr Kingsley Purdam

Research Fellow  
email kingsley.purdam@manchester.ac.uk  
tel +44 (0)161 275 4719

Kingsley Purdam joined CCSR in 2000. He has over ten years' experience in conducting high profile social research on behalf of the Electoral Commission, the Home Office, the Department for Trade and Industry, the Department for Work and Pensions, the National Assembly for Wales, the European Union and numerous local authorities and charities.

His main research interests are public consultation and policy-making. Specific areas include: civic engagement and governance, the regulation of privacy, and research methods in consulting hard-to-reach groups.

#### Recent publications:

- Purdam, K, Afkhami, R, Olsen, W and Wilson, A (2008) Surveying sexual orientation: asking difficult questions and providing useful answers. *Culture, Health and Sexuality* 10(2): 127-141
- Purdam, K Afkhami, R, Olsen, W and Wilson, A (2008) Surveying sexual orientation: asking difficult questions and providing useful answers. *Culture, Health and Sexuality*. Vol 10, 2. P 127-141
- Purdam, K and Elliot, M (2007) Data Quality and Utility. *Environment and Planning A* 39(5): 1101-1118

### Dr Nick Shryane

Postgraduate Teaching Director, Institute for Social Change  
email nick.shryane@manchester.ac.uk  
tel +44 (0)161 275 0276

Nick is interested in the statistical modelling of complex psychosocial systems using latent variables. This involves the use of generalisations of multilevel, structural equation modelling techniques, including factor- and item response theory-mixture models, latent growth curve models and mixed multinomial logit models. Nick has applied these techniques to address issues of wellbeing and social enfranchisement across a wide variety of topic areas, such as political science, psychology, psychiatry and sociology.

#### Recent publications:

- Bentall, R, Rowse, G, Shryane, N, et al (2009) The cognitive and affective structure of paranoid delusions. *Archives of General Psychiatry*, 66(3), 236-247.

- Shryane, N, Corcoran, R, Rowse, G, et al (2008) Deception and false belief in paranoia: modelling theory of mind stories. *Cognitive Neuropsychiatry*, 13(1), 8-32.
- Fieldhouse, E, Shryane, N and Pickles, A (2007) Strategic voting and constituency context: Modelling party preference and vote in multiparty elections. *Political Geography*, 26(2), 159-178.

### Dr Mark Tranmer

Senior Lecturer  
email mark.tranmer@manchester.ac.uk  
tel +44 (0)161 275 4744

Mark Tranmer joined CCSR in 1997. He is one of the leading researchers in applying multilevel modelling to substantive questions. He currently is driving forward the cross-disciplinary Social Network Analysis research agenda at Manchester. His main research interests are: Multilevel Modelling – theory and application; combining data from several sources; Social Network Analysis; the ecological fallacy and Census Data Analysis.

#### Recent publications:

- Fieldhouse, E, Tranmer, M and Russell, A (2007) Something about young people or something about elections? Electoral participation of young people in Europe: evidence from a multilevel analysis of the European Social Survey European. *Journal of Political Research* 46: 797-822
- Steel, DG, Tranmer, M and Holt, D (2006) Unravelling ecological analysis. *Journal of Mathematics and Decision Sciences* Article id: 38358. 18
- Tranmer, M, Pickles, A, Fieldhouse, E, Elliot, MJ, Dale, A, Brown, M, Martin, D, Steel, DG and Gardiner, C (2005) The Case for Small Area Microdata. *Journal of the Royal Statistical Society Series A* 168(1): 29-49

# programme details

## taught courses

### Dr Nikos Tzavidis

Lecturer in Social Statistics and Postgraduate Taught Programme Director  
email nikos.tzavidis@manchester.ac.uk  
tel +44 (0)161 306 6953

Nikos Tzavidis joined CCSR in September 2007. Since completing a Ph.D. in Statistics at the University of Southampton, he held posts as Research Fellow at the Southampton Statistical Science Research Institute, University of Southampton (2003-2005) and as Lecturer in Statistics at the Centre for Longitudinal Studies, Institute of Education, University of London (2005-2007).

His research interests include: small area estimation; M-quantile/quantile models; multilevel models; robust inference; geographically weighted regression; spatial analysis; applications of small area models in poverty mapping and applications of multilevel models.

He is currently participating in two major research grants, one on Small Area Methods for Poverty and Living Conditions Estimates (SAMPLE) funded by the EU's 7th European Framework and on the Administrative Data – Methods, Inference and Network (ADMIN) Node funded by the ESRC/NCRM. He is also involved in consultancy work on small area estimation and poverty mapping for the UK Office for National Statistics.

Recent publications:

- Tzavidis, N, Marchetti, S, and Chambers, R (2009) Robust estimation of small area means and quantiles. To appear in the Australia and New Zealand Journal of Statistics.
- Flouri, E, Tzavidis, N, and Kallis, C (2009) Area and family effects on the psychopathology of the Millennium Cohort Study children and their older siblings. To appear in the Journal of Child Psychology and Psychiatry.
- Flouri, E, Mavroveli, S, and Tzavidis, N (2009) Modelling risks: Area deprivation, family socio-economic disadvantage, and adverse life events effects on young children's psychopathology. To appear in Social Psychiatry and Psychiatric Epidemiology.

### Dr Leen Vandecasteele

Research Fellow  
email leen.vandecasteele@manchester.ac.uk  
tel +44 (0)161 306 6954

Leen Vandecasteele is a quantitative sociologist with an interest in both substantive and methodological issues. Her current research focuses on poverty dynamics and income mobility over the life course. Prior to joining CCSR in September 2007, she worked in the methodological support team of the European Social Survey. Her research interests include: poverty and income dynamics; social stratification and social mobility; gender inequality in income trajectories; life course research; longitudinal studies; and non-response in surveys.

Recent publications:

- Debels, A and Vandecasteele, L (2008) The time lag in annual household-based income measures: assessing and correcting the bias. Review of Income and Wealth 54(1): 71-88
- Vandecasteele, L and Debels, A (2007) Modelling attrition in panel data: the effectiveness of weighting. European Sociological Review 23(1): 81-97
- Vandecasteele, L (2004) The individualization process: no matter of individuals... An investigation into the social embeddedness of changing family values. (in Dutch) Tijdschrift voor Sociologie 25(3): 305-334

### Professor David Voas

Professor of Population Studies, ISC Postgraduate Research Programme Director  
email voas@manchester.ac.uk  
tel +44 (0)161 275 4836

David Voas was elected to a Simon Research Fellowship at The University of Manchester in 2003 and appointed to a chair in the Institute for Social Change in 2007. He previously held a lectureship at the University of Sheffield and a research post at the University of Liverpool, having returned to academic life in 1998 after a long period in the private sector. He has spent extended periods overseas, notably in Africa, India, France, the USA and Bulgaria. His degrees are from the London School of Economics and Cambridge.

His research interests include: religious change in modern societies; national and international studies using census and survey data; methods for measuring diversity; the global fertility transition; and computer simulation.

Recent publications:

- Voas, D and Crockett, A (2005) Religion in Britain: Neither believing nor belonging. Sociology 39(1): 11-28
- Voas, D (2003) Competing preferences: A reason fertility tends to be too high or too low. Population and Development Review 29(4): 627-46
- Voas, D, Olson, DVA and Crockett, A (2002) Religious pluralism and participation: Why previous research is wrong. American Sociological Review 67(2): 212-30

### Dr Jo Wathan

Research Fellow  
email jo.wathan@manchester.ac.uk  
tel +44 (0)161 275 4262

Jo primarily works in data support for two national data services where she provides support for large national government microdata: The Samples of Anonymised Records (SARs) and the Economic and Social Data Service. She is currently involved in a survey of academic research facilities and work practices to inform data access policy. Previous roles have involved developing resources for learning and teaching using government microdata and designing household classifications for the 2001 Census. Her PhD was undertaken at CCSR and involved an analysis of the impact of women's family situation on employment participation between 1975 and 1996.

Recent publications:

- Linda, S, Myles, I, Carter, J, Durham, H, Brown, M, Russell, L and Wathan, J (2004) Learning and Teaching online with the UK census. Journal of Geography in Higher Education 28(2): 229-245
- Decent, S, Wathan, J and Brown, S (2004) Mathematical Modelling in Higher Education Social Research. Mathematical Scientist 29: 67-76
- Wathan, J, Holdsworth, C and Leaser, R (2004) Alternative Household Classifications for the 2001 Census. Environment and Planning A 36(6): 1101-1123



### Find out more

For more information about our postgraduate degree programmes, visit our website:

[www.ccsr.ac.uk](http://www.ccsr.ac.uk)

# facilities and support



As you'd expect from a world-class institution, The University of Manchester provides a wide range of comprehensive support services and facilities. Here is a brief outline – use the web links to find out more.

## Academic Advisory Service

This confidential information and advice service is for anyone with academic worries. Our advisers have excellent knowledge and resources to help you make informed decisions to manage your situation.

tel +44 (0)161 275 3033

email [caas@manchester.ac.uk](mailto:caas@manchester.ac.uk)

[www.manchester.ac.uk/academicadvisoryservice](http://www.manchester.ac.uk/academicadvisoryservice)

## Accommodation

With more than 9,200 rooms, The University of Manchester has more university-owned accommodation than any other university in the country, almost all of which is within two miles of campus. A number of residences are reserved exclusively for postgraduates; in others, every effort is made to room graduate students together.

tel +44 (0)161 275 2888

fax +44 (0)161 275 3213

[www.manchester.ac.uk/accommodation](http://www.manchester.ac.uk/accommodation)

In addition to the University's halls of residence, Manchester has a sizeable stock of private accommodation for rent.

tel +44 (0)161 275 7680

fax +44 (0)161 275 7684

email [manchesterstudenthomes@manchester.ac.uk](mailto:manchesterstudenthomes@manchester.ac.uk)

[www.manchesterstudenthomes.com](http://www.manchesterstudenthomes.com)

## Careers Service

A team of careers professionals who specialise in working with postgraduates offer you personal support, training and development opportunities and extensive careers information. Our Careers Service has

been voted the best in the UK by employers for five consecutive years; recognition for the work we do to ensure leading employers get the chance to meet and recruit our students.

[www.manchester.ac.uk/careers](http://www.manchester.ac.uk/careers)

## Childcare

There are two nurseries close to campus for children aged six months to five years.

tel +44 (0)161 272 7121 (Dryden Street Nursery)

tel +44 (0)161 200 4979 (Echoes Nursery)

[www.manchester.ac.uk/studentexperience/childcare](http://www.manchester.ac.uk/studentexperience/childcare)

## Counselling

Our Counselling Service can help you with any personal problems that may affect your work or wellbeing. All help is free and entirely confidential.

tel +44 (0)161 275 2864

email [counsel.service@manchester.ac.uk](mailto:counsel.service@manchester.ac.uk)

[www.manchester.ac.uk/counselling](http://www.manchester.ac.uk/counselling)

## Cultural facilities

Some of the city's finest cultural venues are right here on the University campus.

Manchester Museum

[www.manchester.ac.uk/museum](http://www.manchester.ac.uk/museum)

Whitworth Art Gallery

[www.manchester.ac.uk/whitworth](http://www.manchester.ac.uk/whitworth)

Contact Theatre

[www.contact-theatre.org](http://www.contact-theatre.org)

Jodrell Bank Observatory and Visitor Centre

[www.manchester.ac.uk/jodrellbank](http://www.manchester.ac.uk/jodrellbank)

'Shopping, bars and the epic architecture of the city's industrial past and vibrant present are all a short walk away...'

*The Guardian University Guide*



[www.manchester.ac.uk](http://www.manchester.ac.uk)

## Disability Support Office (DSO)

If you have additional needs arising from a medical condition, a physical or sensory disability, or a specific learning disability, you are strongly encouraged to contact the University's Disability Support Office to discuss your needs, any arrangements that may be necessary and the extent to which appropriate support is available.

tel +44 (0)161 275 7512

fax +44 (0)161 275 7018

minicom +44 (0)161 275 2794

email [dso@manchester.ac.uk](mailto:dso@manchester.ac.uk)

[www.manchester.ac.uk/dso](http://www.manchester.ac.uk/dso)

## International postgraduates

Around 6,000 students from outside the UK are welcomed into postgraduate study at the University every year, from more than 150 countries. A range of facilities and services are available to make your application and move to Manchester go smoothly, including an in-depth arrival guide, a free airport collection service and an orientation programme.

[www.manchester.ac.uk/international](http://www.manchester.ac.uk/international)

## IT services

IT Services provides staff and students with extensive computing facilities, as well as a variety of services around the campus for postgraduate research staff.

[www.manchester.ac.uk/itservices](http://www.manchester.ac.uk/itservices)

## Library and information services

The John Rylands University Library is one of the best-resourced academic libraries in the UK and is widely recognised as one of the world's great research libraries.

[www.manchester.ac.uk/library](http://www.manchester.ac.uk/library)

## Religious support

There are two chaplaincy centres for the major Christian churches: St Peter's House, for the Anglican, Baptist, Methodist and United Reformed Churches; and Avila House for the Roman Catholic Chaplaincy. Hillel House provides facilities for Jewish worship. There are prayer facilities on campus for Muslim students and student societies for many religions.

## Sport

We have an active Athletic Union, a diverse 'Campus Sport' programme and a huge variety of health, fitness and wellbeing classes, as well as volunteering and scholarship opportunities.

[www.manchester.ac.uk/sport](http://www.manchester.ac.uk/sport)

## Student Services Centre (SSC)

The SSC is where you complete all your administrative transactions with the University – eg issues relating to tuition fees, loans, swipe cards, scholarships and awards, examinations and graduation.

tel +44 (0)161 275 5000

email [ssc@manchester.ac.uk](mailto:ssc@manchester.ac.uk)

[www.manchester.ac.uk/ssc](http://www.manchester.ac.uk/ssc)

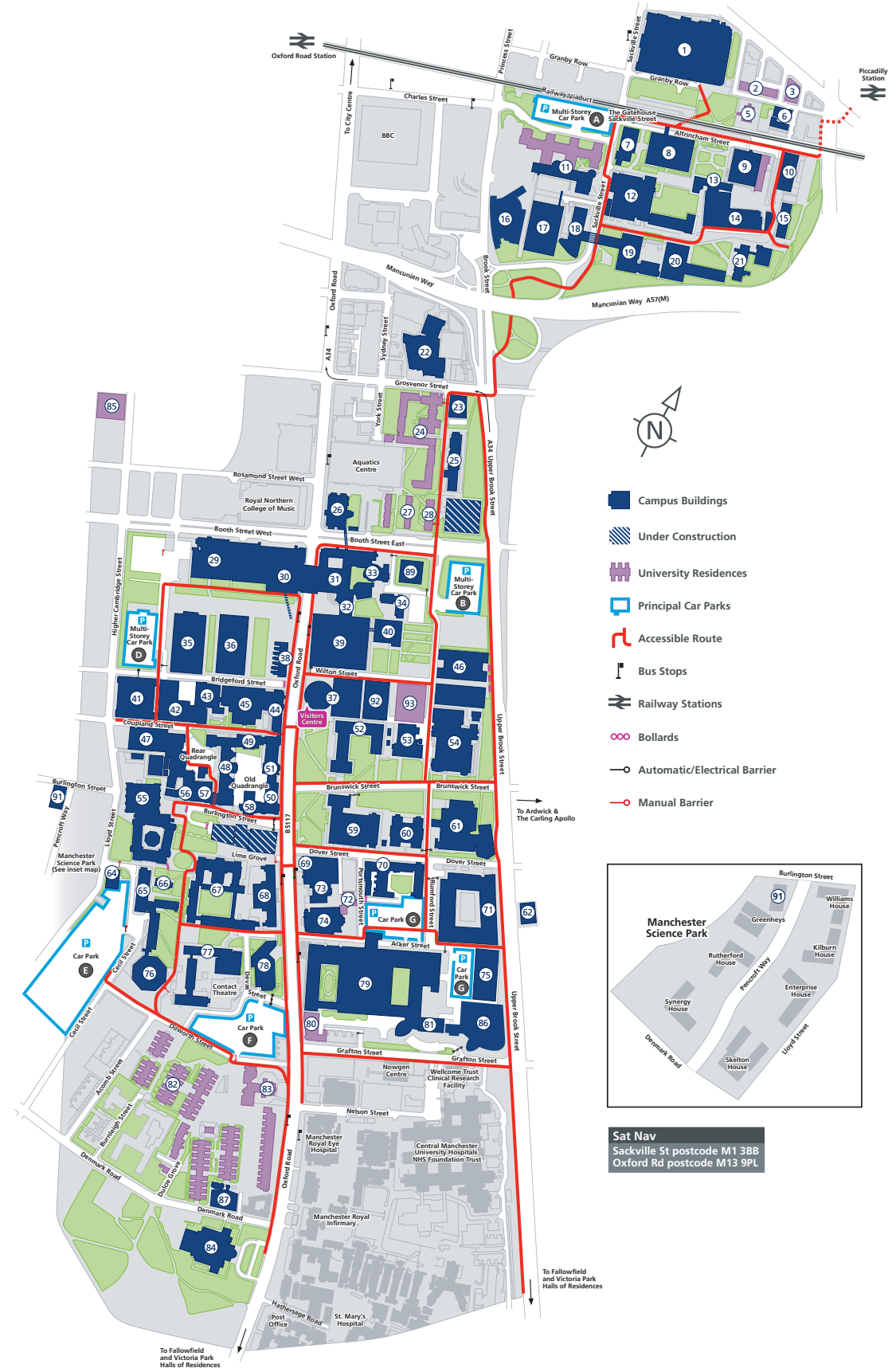
## Students' Union

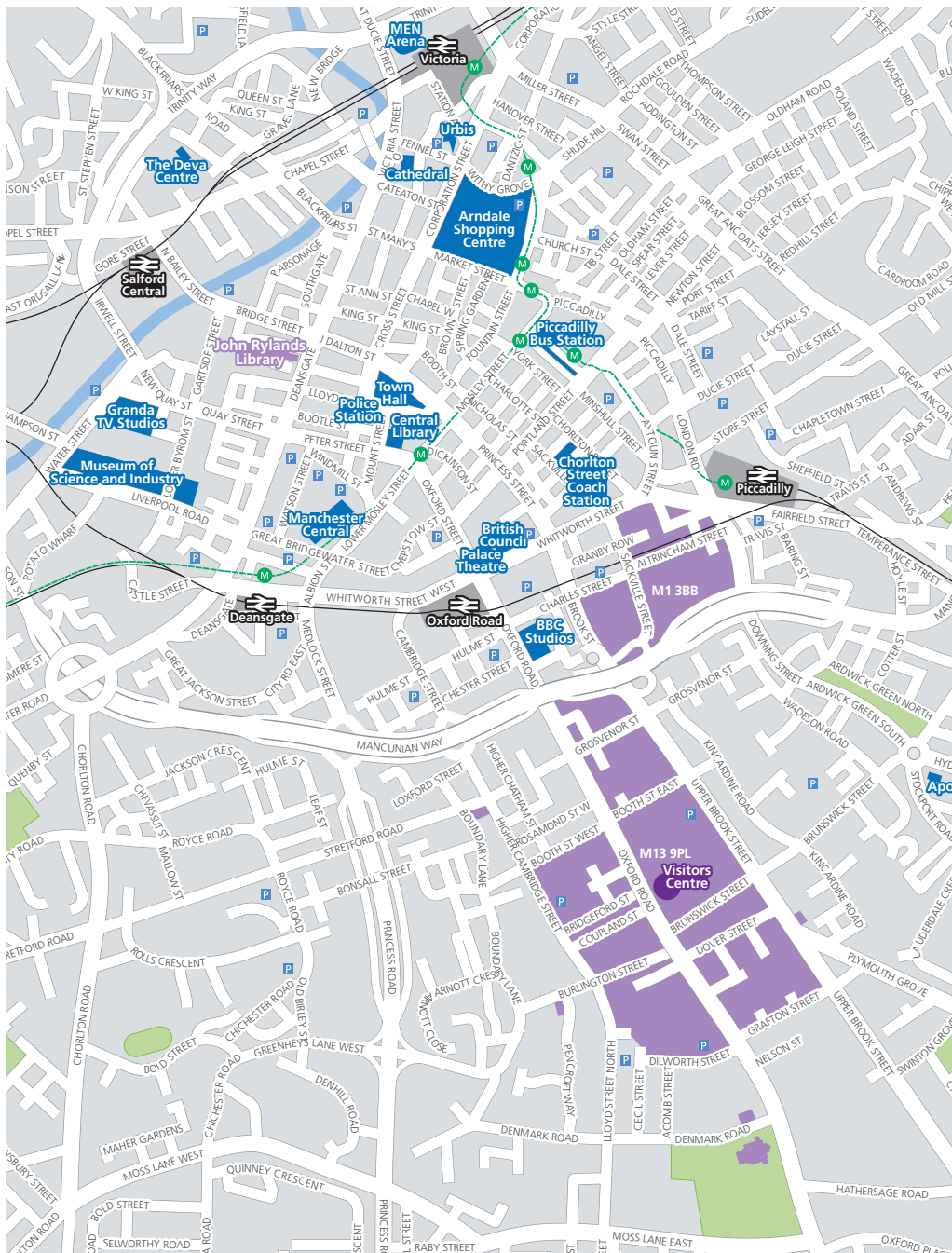
The University of Manchester Students' Union (UMSU) is the largest Students' Union in Europe, offering everything from live bands to student representation. UMSU has some of the largest and most active student societies in the country and complements the University's overall provision of support and welfare services.

[www.umsu.manchester.ac.uk](http://www.umsu.manchester.ac.uk)

# campus map

- |  |   |
|--|---|
| 1 Sackville Street Building  | 45 Rutherford Building  |
| 2 Lambert Hall   | 46 Alan Turing Building   |
| 3 Fairfield Hall   | 47 Coupland Building 3  |
| 5 Chandos Hall   | 48 John Owens Building  |
| 6 Echoes Day Nursery   | 49 Beyer Building   |
| 7 Paper Science Building   | 50 Whitworth Hall   |
| 8 Renold Building  | 51 Whitworth Building   |
| 9 Barnes Wallis Building / Students' Union / Wright Robinson Hall    | 52 Williamson Building  |
| 10 Vision Centre / Moffat Building                                   | 53 Roscoe Building  |
| 11 The Manchester Conference Centre and Weston Hall                  | 54 Schuster Building  |
| 12 Pariser Building  | 55 The John Rylands Library   |
| 13 Staff House Sackville Street                                      | 56 Schunck Building / Burlington Rooms  |
| 14 The Mill  | 57 Student Services Centre  |
| 15 Morton Laboratory   | 58 Christie Building  |
| 16 Manchester Interdisciplinary Biocentre - John Garside Building    | 59 Simon Building   |
| 17 George Begg Building  | 60 Zochonis Building  |
| 18 Faraday Tower   | 61 Chemistry Building   |
| 19 Faraday Building  | 62 Dryden Street Nursery  |
| 20 Ferranti Building   | 64 Environmental Services Unit  |
| 21 Maths and Social Sciences Building                                | 65 Mansfield Cooper Building  |
| 22 Sugden Sports Centre  | 66 Stephen Joseph Studio  |
| 23 Oddfellows Hall   | 67 Samuel Alexander Building  |
| 24 Grosvenor Halls of Residences                                     | 68 Students' Union Oxford Road (also at number 9)                             |
| 25 Materials Science Centre  | 69 William Kay House  |
| 26 Manchester Business School East                                   | 70 Dover Street Building  |
| 27 Bowden Court  | 71 Michael Smith Building   |
| 28 Ronson Hall   | 72 Vaughan House  |
| 29 Manchester Business School West                                   | 73 Avila House RC Chaplaincy  |
| 30 Precinct Shopping Centre Harold Hankins Building Devonshire House | 74 Holy Name Church   |
| 31 Crawford House  | 75 AV Hill Building   |
| 32 St Peters House/Chaplaincy  | 76 AQA  |
| 33 Crawford House Lecture Theatres                                   | 77 Ellen Wilkinson Building   |
| 34 Prospect House  | 78 The Academy  |
| 35 Humanities Bridgeford Street                                      | 79 Stopford Building  |
| 36 Arthur Lewis Building   | 80 Horniman House   |
| 37 University Place  | 81 The Manchester Incubator Building  |
| 38 Waterloo Place  | 82 Whitworth Park Halls of Residence  |
| 39 Kilburn Building  | 83 Grove House  |
| 40 Information Technology Building                                   | 84 The Whitworth Art Gallery  |
| 41 Dental School and Hospital  | 85 Opal Hall  |
| 42 Martin Harris Centre for Music and Drama                          | 86 Core Technology Facility   |
| 43 Coupland Building 1   | 87 Denmark Building   |
| 44 The Manchester Museum   | 89 Lamb Building  |
|  | 91 McDougall Centre   |
|  | 92 Jean McFarlane Building (formerly 37b)                                     |
|  | 93 George Kenyon Building and Hall of Residence and PC cluster (formerly 37a) |





## how to apply contact details

Our preferred method of application for all postgraduate programmes is via our online application form:

[www.manchester.ac.uk/pgapplication](http://www.manchester.ac.uk/pgapplication)

If you are unable to apply online and require a printed application form, contact the Postgraduate Admissions Office:

tel +44 (0)161 275 4740  
 email [pg-admissions@manchester.ac.uk](mailto:pg-admissions@manchester.ac.uk)  
 (remember to include your postal address)

### address

Postgraduate Admissions Office  
 School of Social Sciences  
 The University of Manchester  
 Arthur Lewis Building  
 Oxford Road  
 Manchester  
 M13 9PL  
 United Kingdom

tel +44 (0)161 275 4471

fax +44 (0)161 275 2450

email [pg-ssos@manchester.ac.uk](mailto:pg-ssos@manchester.ac.uk)

website [www.manchester.ac.uk/socialsciences/postgraduate](http://www.manchester.ac.uk/socialsciences/postgraduate)

### Disclaimer

This brochure is prepared well in advance of the academic year to which it relates. Consequently, details of programmes may vary with staff changes. The University therefore reserves the right to make such alterations to programmes as are found to be necessary. If the University makes an offer of a place, it is essential that you are aware of the current terms on which the offer is based. If you are in any doubt, please feel free to ask for confirmation of the precise position for the year in question, before you accept the offer.

### From Piccadilly Gardens Bus Station

(a short walk from Piccadilly Rail Station), take buses 40, 41, 42, 43, 44, 45, 46, 142, 143, 149, 249, 157, W2, or 11. Ask for The University of Manchester Precinct Centre.

### From Victoria Rail Station

Either take the Metrolink tram, or walk to Piccadilly Gardens Bus Station (not the Rail Station) and follow the directions above.

### Parking

Please note that parking near the School is available in several car parks on campus and in a new multi-storey car park.

Postgraduate Admissions Office  
School of Social Sciences  
The University of Manchester  
Arthur Lewis Building  
Oxford Road  
Manchester  
M13 9PL  
United Kingdom

tel +44 (0)161 275 4471  
fax +44 (0)161 275 2450  
email [pg-soss@manchester.ac.uk](mailto:pg-soss@manchester.ac.uk)  
[www.manchester.ac.uk/socialsciences/postgraduate](http://www.manchester.ac.uk/socialsciences/postgraduate)

Royal Charter Number RC000797  
J2197 10.08

