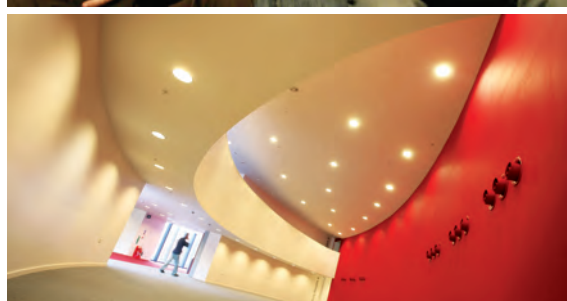


# Philosophy



'Research here has a pedigree of its own...'

*The Virgin Alternative Guide to British Universities*



### The University of Manchester...

- carries out research in a wider range of academic areas than any other UK university
- attracted around £266 million in research funding in the last year
- has more than 5,800 academic and research staff
- has completed the largest and most ambitious buildings and investment programme ever seen in British higher education – more than £400 million to date and a further £250 million by 2015
- has one of the largest and best resourced academic libraries in the country
- has a careers service that has been voted the best in the UK for five consecutive years
- is the most targeted university by the UK's top 100 graduate employers
- enjoys the best of both worlds: city life and campus community

There has never been a better time to be part of The University of Manchester. Choose to be a postgraduate student here and you can join us in achieving our ambitious goals for the future.

The University of Manchester **2**

Philosophy at Manchester **4**

facilities and support **10**

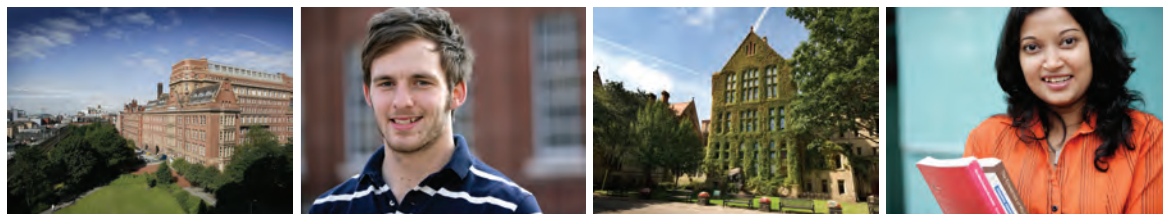
campus map **12**

city map **14**

how to apply **15**

contact details **15**

# The University of Manchester



www.manchester.ac.uk

Come and join one of Britain's most famous and forward-thinking universities, with a rich heritage stretching back 180 years and an exciting agenda for the future...

The birth of the computer, the splitting of the atom, the founding principles of modern economics – these and many more world-altering innovations have their roots at The University of Manchester. Today, our international research centres produce answers to global problems that truly change lives.

Famous for cutting-edge innovation and based in one of the world's most exciting student cities, The University of Manchester offers you excellent prospects. Our aim to become one of the world's top 25 universities – attracting the best tutors, researchers, students and reputation – is backed by British higher education's most ambitious capital building programme, an investment of more than £650 million by 2015.

## Research, discovery and innovation

The 2008 Research Assessment Exercise placed us third in the UK in terms of "research power" and assessed virtually all of our research as reaching international or national standards of excellence. We research in a wider range of areas than any other UK university, and are continuing to increase our number of first-rate professorships, improve our strong links to industry and public services, and invest in world-class facilities.

Whether studying for a taught or research postgraduate degree, you'll be directly involved with groundbreaking research, encouraged to adopt innovative approaches and discover interdisciplinary ways of working that open up exciting new areas of discovery.

## Turning knowledge into enterprise

Your postgraduate work could contribute towards business and economic development outside academia. Manchester has an impressive track record of turning ideas into commercial reality, attracting

world-class academics by providing a dynamic, first-class support system for them to participate and succeed in commercialisation projects. More than 100 'spin-out' companies have been created in recent years based on our current research.

## Career opportunities

As a Manchester graduate you will be in good company: 23 Nobel Prize winners have worked or studied here, and our alumni have an impressive track record of becoming leaders in their fields, from philosopher Wittgenstein to women's rights campaigner Christabel Pankhurst, and from Sir Terry Leahy, Chief Executive of Tesco, to George Richards, President of Trinidad and Tobago.

More than 4,000 recruiters each year from countries around the globe target our graduates. Consistently voted the best in the UK by employers, our Careers Service offers diverse practical, innovative services and events – many exclusively for postgraduates – to make you more employable.

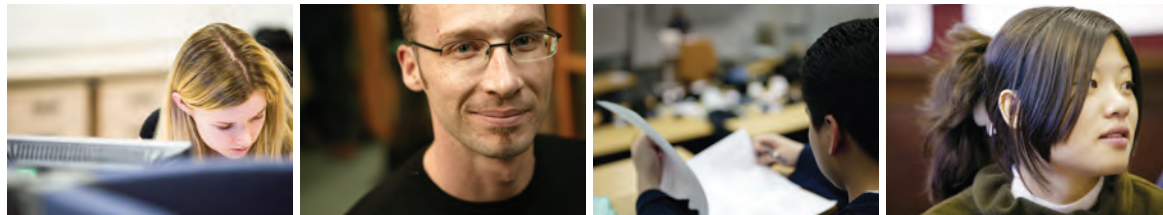
## Cosmopolitan campus

One of the UK's largest and best-resourced academic libraries, premier IT services and extensive student support services are all on our campus, along with impressive sports facilities, restaurants, bars, cafés and a shopping centre. Campus-based cultural attractions include The Manchester Museum, Whitworth Art Gallery and Contact Theatre, with the University's Jodrell Bank Observatory based further afield in Macclesfield. Europe's largest Students' Union provides excellent support services, hundreds of active student societies and four live venues, including the famous Academy, attracting the best big name and upcoming bands.



The University of Manchester

# Philosophy at Manchester



## Why choose to study Philosophy at Manchester?

### Wide range of subject areas

We specialise in all of the areas central to contemporary analytical philosophy. Prior to doctoral studies, our graduates initially follow one of two courses: studying one or more specific area of analytical philosophy (the MRes), or gaining a rigorous and broad-based foundation in analytical philosophy (the MA).

### Taught by internationally renowned academics

All our graduate courses are taught by philosophers who are internationally recognised in their field and our University boasts a reputation for excellence in teaching and research.

Our University library is one of the best research libraries in the country, with a comprehensive range of philosophy journals; it also gives you access to the internationally renowned John Rylands Library and the Manchester Central Reference Library.

### Situated in the great European city of Manchester

The birthplace of modern capitalism and the industrial revolution, Manchester is a hugely popular and vibrant city. Traditional architecture represents a high point of Victorian achievement, while the modern city is a major centre of business, finance, manufacturing and the creative industries. With several universities located within the boundaries of the metropolis, it caters to a very large student population. Manchester's cosmopolitan atmosphere draws visitors from across the world, while its cultural and sporting life is internationally renowned.

### Funding available

Manchester has one of the few Philosophy graduate centres in the UK that can offer internal funding to research students. Students (home and overseas) are eligible to apply for University of Manchester Research Studentships, the discipline-specific Samuel Hall Studentship and other awards, a limited number of which are available each year within the School of Social Sciences. Further information is available online:

[www.manchester.ac.uk/socialsciences/postgraduate/research/funding](http://www.manchester.ac.uk/socialsciences/postgraduate/research/funding)

### The Graduate Centre in Philosophy

Welcome to one of Europe's top centres for outstanding research and teaching. The discipline area of Philosophy is part of the School of Social Sciences. This is a very exciting time for us; in 2007, the School of Social Sciences moved to our new, purpose built accommodation – a statement of confidence in the future of social sciences here at Manchester.

We currently number 14 full-time members of staff, all of whom work in the analytical tradition. Our highly developed research culture emphasises analytical rigour and conceptual clarity.

All of our staff are active researchers, and monographs, articles and edited collections by members of Philosophy are regularly published by leading academic publishers and international journals.

### High profile conferences and seminars

We have hosted a number of successful conferences over the last few years, including conferences on action, truthmakers, aesthetics, Kant, mathematic and the emotions. In 2005, we hosted the Joint Session of the Mind Association and the Aristotelian Society, and the annual conference of the British Society for the Philosophy of Science.

In addition, the discipline area of Philosophy is a regional centre of the Royal Institute of Philosophy, for whom we host an ongoing series of one-day conferences – most recently, a conference on self-knowledge.

We have a regular Philosophy Research Seminar, which takes place most weeks throughout the academic year. Speakers at the Philosophy Research Seminar are professional philosophers drawn from universities in the UK and overseas. In any given year, the seminars cover a wide variety of topics in analytical philosophy. Staff also give regular seminars to an audience of other staff and postgraduate students.

There is also a weekly PhD seminar in which a research student presents a research paper for discussion and receives feedback from other graduate students and members of staff. A yearly graduate conference also presents a forum for graduate students to present their research and share their ideas with other philosophy graduates from outside Manchester.

### Postgraduate study at the Graduate Centre

We welcome applicants from the UK and from abroad. The Graduate Centre in Philosophy offers a flexible and comprehensive range of postgraduate taught courses (MA, MRes and PGDip), externally approved research training and research degrees (PhD and MPhil).

Our aim is to provide a challenging intellectual atmosphere for postgraduate study, along with the best possible support for individual students.

The Graduate Centre is a recognised outlet for the Arts and Humanities Research Council's (AHRC) postgraduate awards, Overseas Research Scholarships (ORS) awards, and for University, School and discipline-level studentships. All our masters courses have been vetted and highly praised by external evaluation bodies.

A team of three runs the Graduate Centre: director, assistant director and secretary. We welcome informal as well as formal enquiries and we will advise masters applicants on the choice of course that will best meet their needs and interests. We also work with prospective research students in order to identify appropriate supervisors and sources of funding, and to develop research proposals.

In particular, potential applicants for AHRC, ORS awards and School, discipline-level and University studentships are invited to seek our expert advice at an early stage. The University of Manchester Studentships are exclusive to this University and are highly competitive, but a number are available each year, as are School and discipline-specific awards.

We look forward to hearing from you.

#### Graham Stevens

Director of Graduate Studies (PGT)  
Philosophy

#### Michael Scott

Director of Graduate Studies (PGR)  
Philosophy

# programme details

## Doctoral research and research training

In order to gain a doctorate, you are required over a three to four-year period to carry out a research project under supervision, and to write up your findings in a thesis of 80,000 words. This thesis must contain original research material. PhDs can be taken on a full-time or part-time basis.

### Research

Because of the number of staff in our discipline areas and the range of research that they undertake, we can offer supervision in nearly all fields of analytical philosophy. We have long maintained a collegial and friendly atmosphere in our working arrangements and we have a good record for seeing doctoral students through to completion on time and to a high standard. If you are seeking information about research degrees and training, you will find below lists of staff and their research interests, and information about our research centres.

### Research interests of Philosophy staff

**Dr Catharine Abell**

Aesthetics, epistemology, philosophy of mind

**Dr Chris Daly**

Metaphysics, logic, philosophy of science

**Professor Julian Dodd**

Philosophy of language, philosophy of art, metaphysics, theory of truth

**Professor Peter Goldie**

Philosophy of mind, aesthetics, ethics

**Dr David Liggins**

Metaphysics, philosophy of language, philosophy of mathematics

**Professor John O'Neill**

Philosophy of economics, political philosophy, ethics, philosophy of science, philosophy of environmental policy

**Dr Michael Scott**

Philosophy of mind, philosophy of psychology, philosophy of religion

**Dr Graham Stevens**

Russell, philosophy of language, philosophy of logic, metaphysics

**Professor Thomas Uebel**

Philosophy of science and social science, epistemology, metaphysics, history of analytical philosophy

**Dr Sean Crawford**

Philosophy of language, philosophy of mind, metaphysics

**Dr Tom Smith**

Philosophy of language, metaphysics

**Dr Ann Whittle**

Metaphysics

**Dr Joel Smith**

Philosophy of mind

**Dr Michiru Nagatsu**

Applied ethics

**Dr Michael Rush**

Metaphysics

### Research projects in Philosophy

'The Motivations of Indifference' is a research project concerning human motivation and environmental sustainability, funded by the Sustainable Consumption Institute at the University. Lead investigators are Professor Peter Goldie and Dr Michael Scott, supported by postdoctoral research fellow Dr Michiru Nagatsu.

'Towards an Aesthetic Psychology: Aesthetic Perception and Cognition' is a philosophical research project, funded by a two-year research grant from the AHRC, based in the Department of Philosophy at The University of Manchester (previously at King's College, London).

Philosophy also hosts HUMAINE, a major EU 'Network of Excellence Research Project' into human-machine emotional interactions.

### Entry requirements

To enrol as a doctoral student in Philosophy, you must have a masters degree in Philosophy, or a related discipline. You should also normally have an Honours degree in an appropriate subject with at least an Upper Second (if from a UK university), or its equivalent from an overseas university.

PhD applicants are expected to have a UK masters degree, or overseas equivalent, in a relevant social science subject, with a minimum overall average of 60%.

## Taught courses

We offer you two comprehensive masters courses in Philosophy: the MRes and MA. Both masters courses:

- are examined on the basis of continuous assessment (essays, oral presentations and participation, and a dissertation);
- last for 12 months (full-time), or 24 months (part-time).

The MRes consists of four examined course units, taught in small tutorial classes over a single semester. The MA consists of three examined course units, taught in larger seminars over a single semester. In addition, MRes and MA students take the larger 'Research Skills' unit over two semesters.

The dissertation is written between May and September. The MA dissertation is 12,000 to 15,000 words long; the MRes dissertation is 15,000 to 20,000 words long. Taught course units are usually spread evenly across the two semesters. Training is also provided in computing, career and communication skills.

### Entry requirements

#### MRes Philosophy

Upper Second class Honours (or overseas equivalent) in Philosophy.

#### MA Philosophy

Upper Second class Honours (or overseas equivalent) in a social science subject.

#### Postgraduate diploma

Lower Second class Honours (or overseas equivalent).

### Diploma

Our diploma course offers a bridge between undergraduate and MA courses, for those who lack the qualifications for direct entry to the MA.

On the diploma path, you take four course units over two semesters (plus the Research Skills unit), but do not write a dissertation. Candidates who complete this diploma often proceed to the masters degree at this or other universities.

An outline of our masters courses is given below. Please note that the exact availability of optional course units is likely to change from year to year.

### MRes in Philosophy

- For those seeking to go on to complete a three-year doctoral programme, or who wish to obtain an externally credited masters with rigorous research training

Training in generic Philosophy research methods is fundamental to the MRes. The strong emphasis upon specific theories in analytical philosophy, and research methods in the subject, reflects the view that preparation for a successful research career (whether pursued through a PhD, or in future employment) requires a general grounding in academic research methods, as well as specialisation in a particular field.

### MRes course units

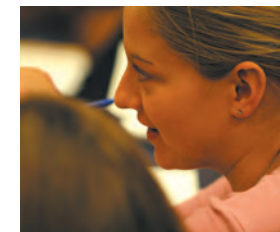
#### MA/MRes Research Skills

This unit is designed to provide you with the skills needed to complete your graduate programme and to form a foundation for possible graduate study. The unit centres around dissertation research and design. You must present parts of your dissertation research and write detailed research proposals. These proposals may form the basis of a PhD application.

#### MRes research papers

You will take four research papers. These are on individual staff members' current research and are therefore likely to change from year to year. Research papers offered include:

- Evaluating Emotions (Peter Goldie)
- Ethics: the Moral Problem (Michael Scott)
- Personal Identity (Simon Langford)
- Explanation in Psychology (Harry Lesser)
- Kripke's Naming and Necessity (Chris Daly)
- The Metaphysics of John Dowell (Julian Dodd)
- Theories of Perception (Michael Scott)



# programme details

## taught courses

### MA in Philosophy

- For those seeking to transfer to Philosophy from a different undergraduate background

The MA is intended to provide a solid foundation in analytical philosophy for graduates from other disciplines who are intending to convert to Philosophy, perhaps as the first step towards doctoral research, or as a means of exploring in more detail philosophical interests raised by their previous studies.

### MA course units

#### MA/MRes Research Skills

This unit is designed to provide you with the skills needed to complete your graduate programme and to form a foundation for possible graduate study. The unit centres around dissertation research and design. You must present parts of your dissertation research and write detailed research proposals. These proposals may form the basis of a PhD application.

- Philosophical Methods (Graham Stevens)
- Metaphysics (David Liggins)
- Philosophy of Language (Chris Daly)
- Epistemology (Thomas Uebel)
- Philosophy of Mind (Michael Scott)
- Ethics (Peter Goldie)
- Aesthetics (Julian Dodd)

### Graduate facilities and opportunities

The Graduate Centre in Philosophy is part of the Graduate School of Social Sciences, which supplements discipline-level provision with a range of half-day and day-long workshops in computing, data-handling, bibliographical skills, career development and employment-related skills.

In the new building, there is a dedicated area in the atrium with computer terminals, which is accessible to taught postgraduate students 24/7. There is also a study area, which has some computers and wireless access, but is mainly an area for reading and studying. Research postgraduate students will have access to desks and computers adjacent to their discipline areas higher up the building.

We encourage and assist graduates to publish the results of their research and doctoral students to become involved in undergraduate teaching, for which compulsory training is provided. Our graduate students regularly organise major conferences, which attract participants from across the UK and abroad.

### Fees, funding and applications

For current fee levels, see:

[www.campus.manchester.ac.uk/ssc/tuitionfees](http://www.campus.manchester.ac.uk/ssc/tuitionfees)

Manchester is one of the few departments of Philosophy in the UK that can offer internal funding to research students. Students (home and overseas) are eligible for University of Manchester Research Studentships and discipline-specific awards, a limited number of which are available each year within the School of Social Sciences. You should indicate on your application form if you wish to be considered for one of these.

We have Research Council recognition for our PhD training programmes. This means that UK-based applicants can apply through us for funding from the AHRC in order to undertake training and research leading to a Doctorate. The AHRC awards provide a generous tax-free scholarship and living allowance, although non-UK EU students are only eligible for a fees-only award.

Applicants for the masters courses in Philosophy can also apply to the AHRC for one year of funding. These courses provide research training, which can be helpful if you wish to later apply for an AHRC, three-year Doctoral award. To be considered for funding, you must apply for a place on the PhD programme and return the School of Social Sciences funding application form by 1 March. The form is available via:

[www.manchester.ac.uk/socialsciences/postgraduate/research/funding](http://www.manchester.ac.uk/socialsciences/postgraduate/research/funding)

In addition to AHRC funding, applications for other national and international awards are also particularly encouraged. The British Council has some funding support for overseas students, such as one-year Chevening Scholarships. Details can be found on the website:

[www.britishcouncil.org](http://www.britishcouncil.org)

The Association of Commonwealth Universities has a Scholars Fellowship scheme for Commonwealth citizens – tel 020 7380 6702, or see the website for details:

[www.acu.ac.uk](http://www.acu.ac.uk)

You may seek advice from the Graduate Centre on the content of your application.

### English language requirements

If your first language is not English, you must attain one of the following:

- IELTS – Overall 7, writing score 7
- TOEFL – Overall 623, TWE 5 (PBT)
- TOEFL – Overall 100, with 25 in each of the four sections (IBT)

Applicants with scores below our requirements may be eligible to attend one of our pre-session English courses. Duration will be confirmed when an official result has been received.

Exemption to the requirements is at the discretion of the School. Applicants who have been taught and assessed in English on previous degrees may still be required to show proof of English proficiency via TOEFL/IELTS.

TOEFL Certificates – Please designate The University of Manchester as a recipient of your result. The code is 0757. Results must come directly from ETS (TOEFL). Test scores are valid for two years.

### Disabled applicants

Applications from students with additional support needs – eg a disability, medical condition, or specific learning difficulty – are considered on the same academic grounds as all other applications.

### Applications

If applying for the PhD or MPhil, please make sure that you include a detailed research proposal.

Your completed online application package should therefore include the following:

- Completed application form
- Two academic references
- Copies of certificates or transcripts of all degree (or equivalent)
- Research proposal (research degrees only)
- English Language Certificate, where relevant

If you are unable to send a complete application package, please send what you have available with a covering letter explaining what is missing and giving an indication when you will be able to send the outstanding papers.



# facilities and support



As you'd expect from a world-class institution, The University of Manchester provides a wide range of comprehensive support services and facilities. Here is a brief outline – use the web links to find out more.

## Academic Advisory Service

This confidential information and advice service is for anyone with academic worries. Our advisers have excellent knowledge and resources to help you make informed decisions to manage your situation.

tel +44 (0)161 275 3033

email [caas@manchester.ac.uk](mailto:caas@manchester.ac.uk)

[www.manchester.ac.uk/academicadvisoryservice](http://www.manchester.ac.uk/academicadvisoryservice)

## Accommodation

With more than 9,200 rooms, The University of Manchester has more university-owned accommodation than any other university in the country, almost all of which is within two miles of campus. A number of residences are reserved exclusively for postgraduates; in others, every effort is made to room graduate students together.

tel +44 (0)161 275 2888

fax +44 (0)161 275 3213

[www.manchester.ac.uk/accommodation](http://www.manchester.ac.uk/accommodation)

In addition to the University's halls of residence, Manchester has a sizeable stock of private accommodation for rent.

tel +44 (0)161 275 7680

fax +44 (0)161 275 7684

email [manchesterstudenthomes@manchester.ac.uk](mailto:manchesterstudenthomes@manchester.ac.uk)

[www.manchesterstudenthomes.com](http://www.manchesterstudenthomes.com)

## Careers Service

A team of careers professionals who specialise in working with postgraduates offer you personal support, training and development opportunities and extensive careers information. Our Careers Service has

been voted the best in the UK by employers for five consecutive years; recognition for the work we do to ensure leading employers get the chance to meet and recruit our students.

[www.manchester.ac.uk/careers](http://www.manchester.ac.uk/careers)

## Childcare

There are two nurseries close to campus for children aged six months to five years.

tel +44 (0)161 272 7121 (Dryden Street Nursery)

tel +44 (0)161 200 4979 (Echoes Nursery)

[www.manchester.ac.uk/studentexperience/childcare](http://www.manchester.ac.uk/studentexperience/childcare)

## Counselling

Our Counselling Service can help you with any personal problems that may affect your work or wellbeing. All help is free and entirely confidential.

tel +44 (0)161 275 2864

email [counsel.service@manchester.ac.uk](mailto:counsel.service@manchester.ac.uk)

[www.manchester.ac.uk/counselling](http://www.manchester.ac.uk/counselling)

## Cultural facilities

Some of the city's finest cultural venues are right here on the University campus.

Manchester Museum

[www.manchester.ac.uk/museum](http://www.manchester.ac.uk/museum)

Whitworth Art Gallery

[www.manchester.ac.uk/whitworth](http://www.manchester.ac.uk/whitworth)

Contact Theatre

[www.contact-theatre.org](http://www.contact-theatre.org)

Jodrell Bank Observatory and Visitor Centre

[www.manchester.ac.uk/jodrellbank](http://www.manchester.ac.uk/jodrellbank)

'Shopping, bars and the epic architecture of the city's industrial past and vibrant present are all a short walk away...'

*The Guardian University Guide*



[www.manchester.ac.uk](http://www.manchester.ac.uk)

## Disability Support Office (DSO)

If you have additional needs arising from a medical condition, a physical or sensory disability, or a specific learning disability, you are strongly encouraged to contact the University's Disability Support Office to discuss your needs, any arrangements that may be necessary and the extent to which appropriate support is available.

tel +44 (0)161 275 7512

fax +44 (0)161 275 7018

minicom +44 (0)161 275 2794

email [dso@manchester.ac.uk](mailto:dso@manchester.ac.uk)

[www.manchester.ac.uk/dso](http://www.manchester.ac.uk/dso)

## International postgraduates

Around 6,000 students from outside the UK are welcomed into postgraduate study at the University every year, from more than 150 countries. A range of facilities and services are available to make your application and move to Manchester go smoothly, including an in-depth arrival guide, a free airport collection service and an orientation programme.

[www.manchester.ac.uk/international](http://www.manchester.ac.uk/international)

## IT services

IT Services provides staff and students with extensive computing facilities, as well as a variety of services around the campus for postgraduate research staff.

[www.manchester.ac.uk/itservices](http://www.manchester.ac.uk/itservices)

## Library and information services

The John Rylands University Library is one of the best-resourced academic libraries in the UK and is widely recognised as one of the world's great research libraries.

[www.manchester.ac.uk/library](http://www.manchester.ac.uk/library)

## Religious support

There are two chaplaincy centres for the major Christian churches: St Peter's House, for the Anglican, Baptist, Methodist and United Reformed Churches; and Avila House for the Roman Catholic Chaplaincy. Hillel House provides facilities for Jewish worship. There are prayer facilities on campus for Muslim students and student societies for many religions.

## Sport

We have an active Athletic Union, a diverse 'Campus Sport' programme and a huge variety of health, fitness and wellbeing classes, as well as volunteering and scholarship opportunities.

[www.manchester.ac.uk/sport](http://www.manchester.ac.uk/sport)

## Student Services Centre (SSC)

The SSC is where you complete all your administrative transactions with the University – eg issues relating to tuition fees, loans, swipe cards, scholarships and awards, examinations and graduation.

tel +44 (0)161 275 5000

email [ssc@manchester.ac.uk](mailto:ssc@manchester.ac.uk)

[www.manchester.ac.uk/ssc](http://www.manchester.ac.uk/ssc)

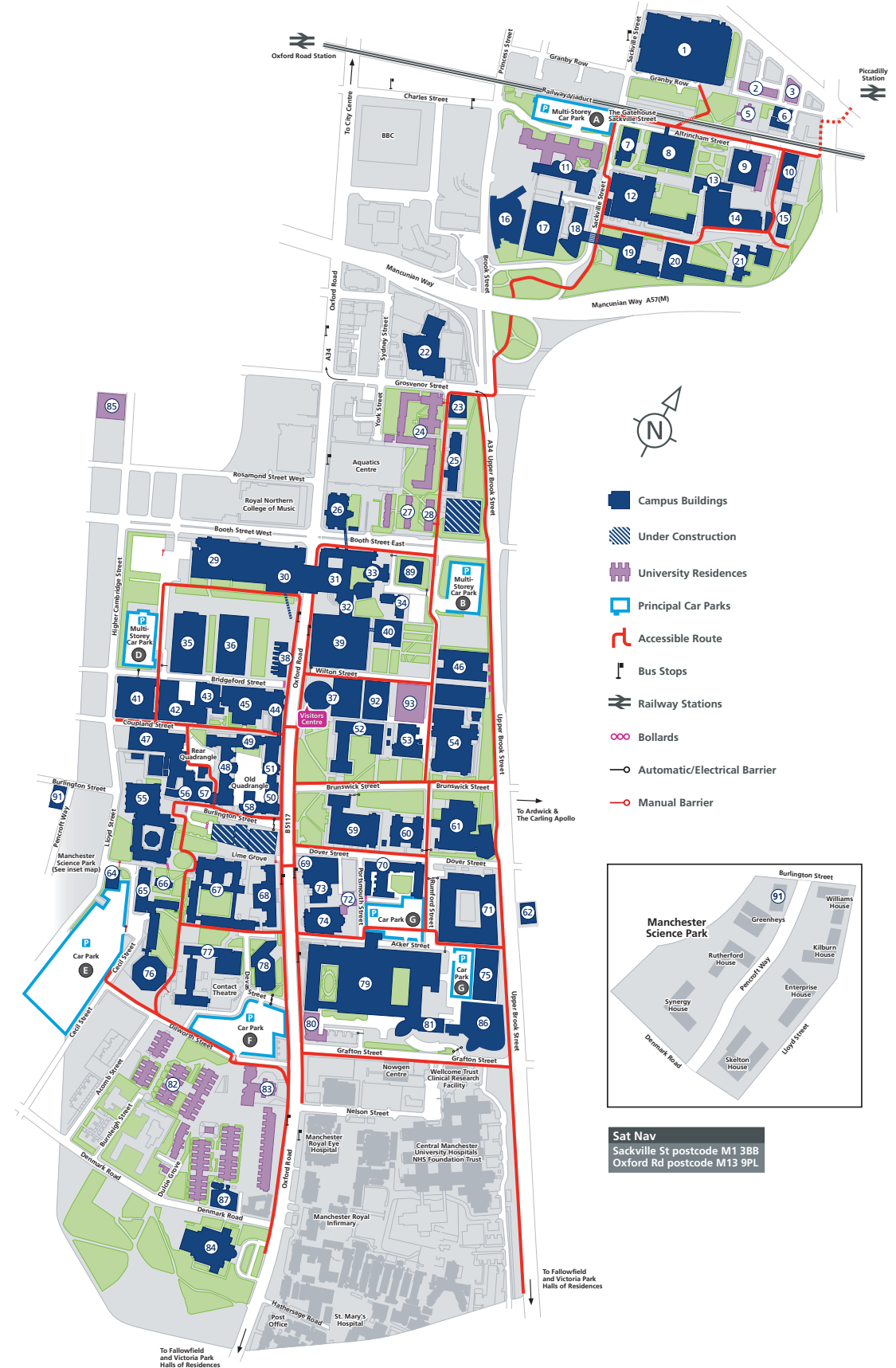
## Students' Union

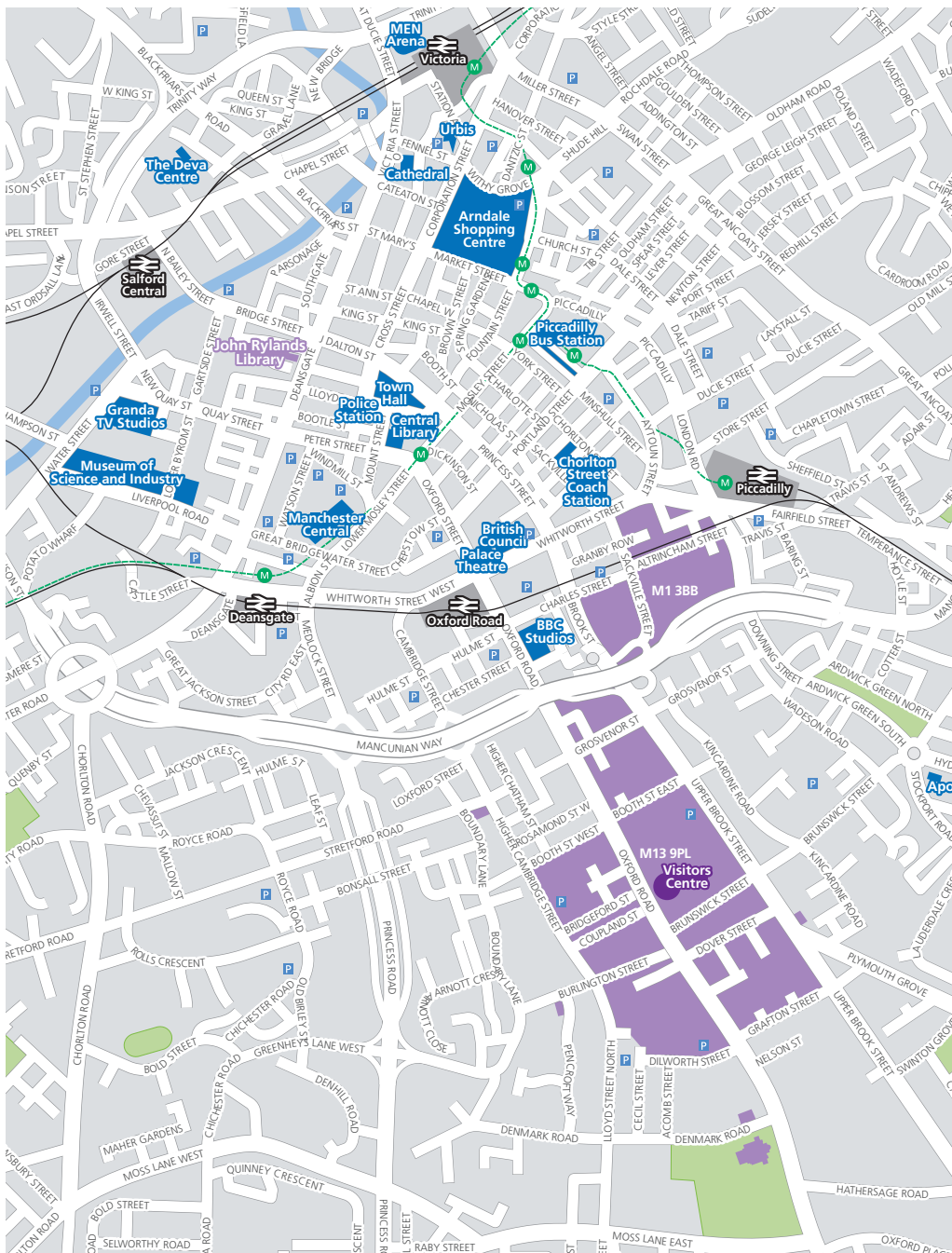
The University of Manchester Students' Union (UMSU) is the largest Students' Union in Europe, offering everything from live bands to student representation. UMSU has some of the largest and most active student societies in the country and complements the University's overall provision of support and welfare services.

[www.umsu.manchester.ac.uk](http://www.umsu.manchester.ac.uk)

# campus map

- |  |   |
|--|---|
| 1 Sackville Street Building  | 45 Rutherford Building  |
| 2 Lambert Hall   | 46 Alan Turing Building   |
| 3 Fairfield Hall   | 47 Coupland Building 3  |
| 5 Chandos Hall   | 48 John Owens Building  |
| 6 Echoes Day Nursery   | 49 Beyer Building   |
| 7 Paper Science Building   | 50 Whitworth Hall   |
| 8 Renold Building  | 51 Whitworth Building   |
| 9 Barnes Wallis Building / Students' Union / Wright Robinson Hall          | 52 Williamson Building  |
| 10 Vision Centre / Moffat Building   | 53 Roscoe Building  |
| 11 The Manchester Conference Centre and Weston Hall                        | 54 Schuster Building  |
| 12 Pariser Building  | 55 The John Rylands Library   |
| 13 Staff House Sackville Street  | 56 Schunck Building / Burlington Rooms  |
| 14 The Mill  | 57 Student Services Centre  |
| 15 Morton Laboratory   | 58 Christie Building  |
| 16 Manchester Interdisciplinary Biocentre - John Garside Building          | 59 Simon Building   |
| 17 George Begg Building  | 60 Zochonis Building  |
| 18 Faraday Tower   | 61 Chemistry Building   |
| 19 Faraday Building  | 62 Dryden Street Nursery  |
| 20 Ferranti Building   | 64 Environmental Services Unit  |
| 21 Maths and Social Sciences Building                                      | 65 Mansfield Cooper Building  |
| 22 Sugden Sports Centre  | 66 Stephen Joseph Studio  |
| 23 Oddfellows Hall   | 67 Samuel Alexander Building  |
| 24 Grosvenor Halls of Residences   | 68 Students' Union Oxford Road (also at number 9)                             |
| 25 Materials Science Centre  | 69 William Kay House  |
| 26 Manchester Business School East   | 70 Dover Street Building  |
| 27 Bowden Court  | 71 Michael Smith Building   |
| 28 Ronson Hall   | 72 Vaughan House  |
| 29 Manchester Business School West   | 73 Avila House RC Chaplaincy  |
| 30 Precinct Shopping Centre<br>Harold Hankins Building<br>Devonshire House | 74 Holy Name Church   |
| 31 Crawford House  | 75 AV Hill Building   |
| 32 St Peters House/Chaplaincy  | 76 AQA  |
| 33 Crawford House Lecture Theatres   | 77 Ellen Wilkinson Building   |
| 34 Prospect House  | 78 The Academy  |
| 35 Humanities Bridgeford Street  | 79 Stopford Building  |
| 36 Arthur Lewis Building   | 80 Horniman House   |
| 37 University Place  | 81 The Manchester Incubator Building  |
| 38 Waterloo Place  | 82 Whitworth Park Halls of Residence  |
| 39 Kilburn Building  | 83 Grove House  |
| 40 Information Technology Building   | 84 The Whitworth Art Gallery  |
| 41 Dental School and Hospital  | 85 Opal Hall  |
| 42 Martin Harris Centre for Music and Drama                                | 86 Core Technology Facility   |
| 43 Coupland Building 1   | 87 Denmark Building   |
| 44 The Manchester Museum   | 89 Lamb Building  |
|  | 91 McDougall Centre   |
|  | 92 Jean McFarlane Building (formerly 37b)                                     |
|  | 93 George Kenyon Building and Hall of Residence and PC cluster (formerly 37a) |





## how to apply contact details

Our preferred method of application for all postgraduate programmes is via our online application form:

[www.manchester.ac.uk/pgapplication](http://www.manchester.ac.uk/pgapplication)

If you are unable to apply online and require a printed application form, contact the Postgraduate Admissions Office:

tel +44 (0)161 275 4740  
 email [pg-admissions@manchester.ac.uk](mailto:pg-admissions@manchester.ac.uk)  
 (remember to include your postal address)

### address

Postgraduate Admissions Office  
 School of Social Sciences  
 Arthur Lewis Building  
 The University of Manchester  
 Oxford Road  
 Manchester  
 M13 9PL

tel +44 (0)161 275 1296 (Taught course enquiries)  
 tel +44 (0)161 275 4743 (Research course enquiries)  
 fax +44 (0)161 275 2450  
 email [pg-soss@manchester.ac.uk](mailto:pg-soss@manchester.ac.uk)  
 website [www.manchester.ac.uk/socialsciences/postgraduate](http://www.manchester.ac.uk/socialsciences/postgraduate)

### From Piccadilly Gardens Bus Station

(a short walk from Piccadilly Rail Station), take buses 40, 41, 42, 43, 44, 45, 46, 142, 143, 149, 249, 157, W2, or 11. Ask for The University of Manchester Precinct Centre.

### From Victoria Rail Station

Either take the Metrolink tram, or walk to Piccadilly Gardens Bus Station (not the Rail Station) and follow the directions above.

### Parking

Please note that parking near the School is available in several car parks on campus and in a new multi-storey car park.

### Disclaimer

This brochure is prepared well in advance of the academic year to which it relates. Consequently, details of programmes may vary with staff changes. The University therefore reserves the right to make such alterations to programmes as are found to be necessary. If the University makes an offer of a place, it is essential that you are aware of the current terms on which the offer is based. If you are in any doubt, please feel free to ask for confirmation of the precise position for the year in question, before you accept the offer.

Postgraduate Admissions Office  
School of Social Sciences  
Arthur Lewis Building  
The University of Manchester  
Oxford Road  
Manchester  
M13 9PL

tel +44 (0)161 275 1296 (Taught course enquiries)  
tel +44 (0)161 275 4743 (Research course enquiries)  
email [pg-soss@manchester.ac.uk](mailto:pg-soss@manchester.ac.uk)  
[www.manchester.ac.uk/socialsciences/postgraduate](http://www.manchester.ac.uk/socialsciences/postgraduate)

Royal Charter Number RC000797  
J2698 11.09

