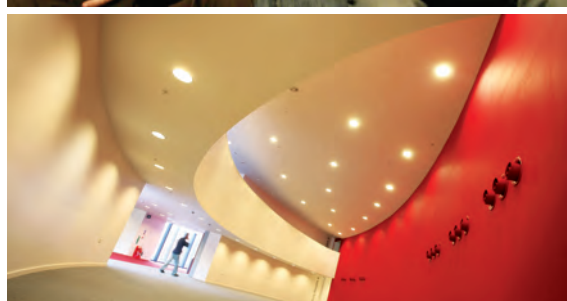


Social Anthropology



'Research here has a pedigree of its own...'

The Virgin Alternative Guide to British Universities



The University of Manchester...

- carries out research in a wider range of academic areas than any other UK university
- attracted around £266 million in research funding in the last year
- has more than 5,800 academic and research staff
- has completed the largest and most ambitious buildings and investment programme ever seen in British higher education – more than £400 million to date and a further £250 million by 2015
- has one of the largest and best resourced academic libraries in the country
- has a careers service that has been voted the best in the UK for five consecutive years
- is the most targeted university by the UK's top 100 graduate employers
- enjoys the best of both worlds: city life and campus community

There has never been a better time to be part of The University of Manchester. Choose to be a postgraduate student here and you can join us in achieving our ambitious goals for the future.

The University of Manchester 2

[Social Anthropology at Manchester](#) 6

[facilities and support](#) 26

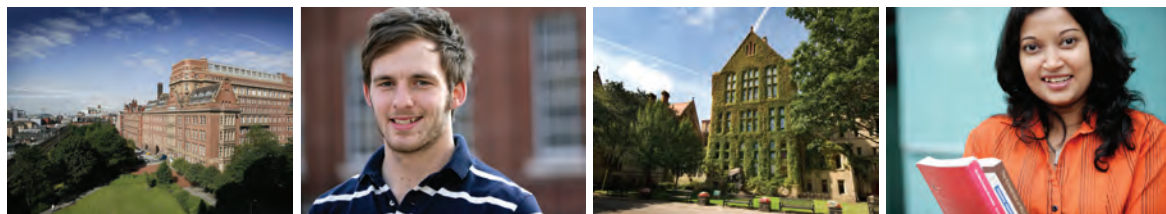
[campus map](#) 28

[city map](#) 30

[how to apply](#) 31

[contact details](#) 31

The University of Manchester



Come and join one of Britain's most famous and forward-thinking universities, with a rich heritage stretching back 180 years and an exciting agenda for the future...

The birth of the computer, the splitting of the atom, the founding principles of modern economics – these and many more world-altering innovations have their roots here, at The University of Manchester. Today, our international research centres produce answers to global problems that truly change lives.

Famous for cutting-edge innovation and based in one of the world's most exciting student cities, The University of Manchester offers you excellent prospects. Our aim to become one of the world's top 25 universities – attracting the best tutors, researchers, students and reputation – is backed by British higher education's most ambitious capital building programme, an investment of more than £650 million by 2015.

Research, discovery and innovation

The 2008 Research Assessment Exercise placed us third in the UK in terms of "research power" and assessed virtually all of our research as reaching international or national standards of excellence. We research in a wider range of areas than any other UK university, and are continuing to increase our number of first-rate professorships, improve our strong links to industry and public services, and invest in world-class facilities.

Whether studying for a taught or research postgraduate degree, you'll be directly involved with groundbreaking research, encouraged to adopt innovative approaches and discover interdisciplinary ways of working that open up exciting new areas of discovery.

Turning knowledge into enterprise

Your postgraduate work could contribute towards business and economic development outside academia. Manchester has an impressive track record of turning ideas into commercial reality, attracting

world-class academics by providing a dynamic, first-class support system for them to participate and succeed in commercialisation projects. More than 100 'spin-out' companies have been created in recent years based on our current research.

Career opportunities

As a Manchester graduate, you will be in good company: 23 Nobel Prize winners have worked or studied here, and our alumni have an impressive track record of becoming leaders in their fields, from philosopher Wittgenstein to women's rights campaigner Christabel Pankhurst, and from Sir Terry Leahy, Chief Executive of Tesco, to George Richards, President of Trinidad and Tobago.

More than 4,000 recruiters each year from countries around the globe target our graduates. Consistently voted the best in the UK by employers, our Careers Service offers diverse practical, innovative services and events – many exclusively for postgraduates – to make you more employable.

Cosmopolitan campus

One of the UK's largest and best-resourced academic libraries, premier IT services and extensive student support services are all on our campus, along with impressive sports facilities, restaurants, bars, cafes and a shopping centre. Campus-based cultural attractions include The Manchester Museum, Whitworth Art Gallery and Contact Theatre, with the University's Jodrell Bank Observatory based further afield in Macclesfield. Europe's largest Students' Union provides excellent support services, hundreds of active student societies and four live venues, including the famous Academy, attracting the best big name and upcoming bands.



Social Anthropology at Manchester



Since it was first established in 1949, Social Anthropology at Manchester has progressed to become recognised nationally and internationally as one of the premier centres for research and teaching in the subject.

Our strength comes from the diversity of the specific interests of our staff and students. Staff members' current main geographical research areas are: Africa (Kenya, Tanzania, Zambia, Uganda, Botswana); the Arab World (Lebanon); Asia (central Asia, India); Japan; south-eastern Europe (Greece, Serbia, Bosnia-Herzegovina, Croatia, Turkey); northern Europe (Germany, Portugal, UK); Latin America (Mexico, Peruvian Andes, Brazil, Colombia); Oceania/Melanesia (New Ireland, Vanuatu, New Britain); Russia; and the USA. General interests cover practically every major branch of anthropology.

The Granada Centre for Visual Anthropology is an integral part of Social Anthropology at Manchester, offering you a range of courses in ethnographic film and sensory media.

We offer a number of taught masters courses – including the MA in Visual Anthropology, a hands-on course in anthropological filmmaking and other methods of visual production – and a research degree programme.

Social Anthropology has several Latin Americanist anthropologists and has close links with the Centre for Latin American and Caribbean Studies (CLACS). The MA in Latin American Cultural Studies is run in collaboration with CLACS.

We place great importance on the personal relationships that students build up with their tutors and with one another. You will join students from a wide variety of backgrounds, with a diverse range of experience, and will thus enjoy a lively and enriching atmosphere.

High profile reputation

Our department is one of the largest of its kind in Britain, with a complement of 20 research-active academic members of staff and five post-doctoral researchers, supported by the School of Social Sciences administrative staff and one audio-visual technician. In addition, distinguished scholars from other anthropology departments around the world regularly visit Manchester, providing you with access to some of the best anthropologists from around the world.

Social Anthropology at Manchester plays a leading role in sustaining the profile of social anthropology at both a national and international level. Staff are active members of the ESRC Centre for Research on Economic and Socio-Cultural Change (CRESC) and participate actively in the Association of Social Anthropologists and the Royal Anthropological Institute. We are closely linked with the new Research Institute in Cosmopolitan Cultures (RICC), and also the Centre for the Advanced Study of the Arab World (CASAW).

Areas of research expertise

Our staff produce and engage with cutting-edge anthropological research across Africa, Europe, Oceania, Latin America, the Arab World and Asia. Current areas of expertise include:

- Ways of knowing and forms of knowledge
- Science and technology, including engineering
- Space, place and location (including borders)
- Religion and ritual
- Visual anthropology
- Kinship, personhood and relatedness
- Material culture
- Museum studies
- Comparative political economy
- Modernisation processes
- Social movements
- Ethnicity and race
- Citizenship and state politics
- Trans-nationalism
- Post-colonialism
- Post-socialism
- Interdisciplinary cultural and social research
- Gender and sexuality
- Language

A distinguished history

The Department of Social Anthropology was founded in 1949 by Max Gluckman, under whom we gained a worldwide reputation. From the beginning, our scope of research was broad. The department became best known – under the guise of the 'Manchester School' – for its influential series of studies of Central and Southern Africa; however, there was also a strong interest in India and later in East Africa.

A focus on Middle Eastern societies was introduced with the work of Emrys Peters, who succeeded Gluckman to the Chair, holding it until his retirement in 1984. From 1985 until 1993, Marilyn Strathern held the Chair, under whose leadership the department gained particular research strengths in the fields of gender and kinship studies, especially in Melanesia and Britain.

The Granada Centre for Visual Anthropology was established in 1987 and in 1990 the department gained a second Chair, with the appointment of Tim Ingold as Professor of Anthropology. He was succeeded as Head of Department by John Gledhill (1997-2001), who was followed by Penny Harvey (2001-2004) and then Peter Wade (2004-2007).

Sarah Green took over as Head of Social Anthropology in 2007.

course information



Postgraduate taught (PGT) courses

- MA and PGDip in Social Anthropology
- MA and PGDip in Social Anthropology with Visual Pathway
- MA in Visual Anthropology
- MA in Anthropological Research (recognised for ESRC 1+3 funding)

Another course involving teaching by anthropologists is the MA in Latin American Cultural Studies. The School of Languages, Linguistics and Cultures manages admissions to this course. See:

www.manchester.ac.uk/llc/Research/Centres/CentreforLatinAmericanCulturalStudies

Postgraduate research (PGR) programmes

- MPhil in Social Anthropology
- MPhil in Visual Anthropology
- MPhil in Ethnographic Documentary
- PhD in Social Anthropology
- PhD in Social Anthropology with Visual Media

Teaching methods

All taught courses in Social Anthropology are built around core course units designed to meet the specific needs of each course, while also allowing flexibility in the selection of additional options to satisfy individual interests. Most courses involve weekly lectures or seminars throughout both semesters, as well as close and regular contact between students and academic staff.

You will be assigned a supervisor who will meet with you regularly throughout the academic year and who will also provide crucial support in preparation for the writing of a dissertation. These individually focused tutorial methods remain the hallmark of our approach.

Supervision is a crucial consideration for all research degrees and you are advised to establish contact with an academic member of staff with the appropriate regional and/or thematic interests to act as your principal supervisor. You should therefore read the information on teaching and research interests of academic staff with particular care (see below). More detailed information about staff research interests is available on the Social Anthropology website, which gives access to the personal web pages of some members of staff:

www.manchester.ac.uk/socialsciences/disciplines/socialanthropology/about/staff

Research degree students are usually assigned two supervisors, although often in practice you work principally with one, with whom you meet on a regular basis – typically every two weeks during the pre-fieldwork year.



Extensive, high quality resources

The John Rylands Library is both the University's library and an information service. The main library is at the heart of the University's campus and contains more than a million books, periodicals and other items, most of which are available for loan to members of the University. You will also enjoy access to a large number of other services and resources, including the most extensive range of electronic resources (particularly online journals) of any UK higher education library. Well-equipped with photocopying facilities, its computerised information retrieval services include online searching, networked CD-ROMs and nationally networked datasets. According to the Times Literary Supplement, it "ranks among the world's greatest research libraries, with holdings in many areas that few, if any, comparable institutions can match."

The Library's main holdings in social anthropology comprise some 6,000 books and many titles of direct interest to anthropologists are to be found in the Sociology, History and Religion collections. It currently subscribes to some 40 anthropology journals, many of which are available online. In addition to its general collection, the Library has impressive holdings of Africanist materials, of which the most significant is the collection of the International African Institute. It also houses ALACRAN, a collection of several hundred off-prints and photocopies of difficult-to-find articles on Latin American anthropological subjects.

The Social Anthropology Film Library, located in the Granada Centre for Visual Anthropology, houses 1,700 film titles covering classic ethnographic film, contemporary documentary, cinema history and modern film. It also houses a collection of films made by Visual Anthropology students.

Facilities provided by the **University's Media Centre** are critical to the work of the Granada Centre in Visual Anthropology. These currently include eight

off-line non-linear suites, used for training, and an AVID non-linear editing system used for advanced student projects, as well as for research projects by members of the academic staff. The service also provides a sound-mixing suite, titling and subtitling facilities, and a small video projection theatre, as well as a wide range of graphics, DVD, and tape-copying facilities. In addition, the Granada Centre has dedicated editing suite space in the new Arthur Lewis Building.

You will have access to various **seminar series** across the University, including the Social Anthropology Research seminar, the Latin American and Caribbean Studies seminar, the Granada Centre graduation film screenings, the annual Forman Lecture in Visual Anthropology and other occasional lectures and seminars given by distinguished visitors.

Outstanding IT support

The University of Manchester has an international reputation for Information Systems. Our IT services are at the forefront of computing technology and, via an extensive campus-wide ethernet and wireless network, provide access to a wide range of information services on the University campus, and on a national and international level. You are automatically registered for email and have access to the internet.

The University now has more than 6,000 PCs in local clusters, and in public access clusters located in the library and around campus. The Arthur Lewis Building provides postgraduate students with generous access to study space and computing and printing facilities.

course information

Assessment methods

MA

Assessment of MA coursework is primarily by means of extended essays (usually of 4,000 words) and, in some cases, oral presentations, or practical projects (especially for courses in visual anthropology). There are no formal written examinations. Two internal examiners mark and moderate all assessment scripts and an external examiner from another university moderates the overall process.

MPhil/PhD

Two examiners, one internal and the other external, assess doctoral theses. After reading the thesis, they invite you to attend a viva voce interview. Your supervisor, as well as other members of the University, may attend the viva; however, in contrast to some European and North American conventions, they may only observe the process and cannot make verbal interventions.

Computer literacy and transferable skills

To ensure basic computer literacy, the University provides an online course that covers the basics of email, networking, file management, word processing, databases, spreadsheets and presentations.

You can also take short courses in transferable personal skills and tutor training (for those intending to work as teaching assistants – note that, normally, only students on research programmes are employed as teaching assistants in Social Anthropology).

How to apply

Where possible, applications should be made online via:

www.manchester.ac.uk/postgraduate/howtoapply

If any documents are in a language other than English, you will need to provide official translations.

In addition to the form and accompanying letters of recommendation, certain programmes also require further materials:

- Applicants for the masters/diploma should indicate their preferred thematic pathway, if applicable (see below).
- All applicants for the MA in Visual Anthropology must submit a statement of approximately 500 words, detailing your interests in anthropology in general and visual anthropology in particular. You should also indicate your preferred pathway (see below). If you have not taken a specialist first degree in social or cultural anthropology, you should also submit a list of the anthropology courses that you have taken. Finally, as evidence of interest or competence in visual media, you may like to submit a limited number of examples of any visual work that you may have done (eg photographs, a video, or photographs of artwork). However, please note that this is not obligatory and that you should not submit originals, since we cannot guarantee to return any materials submitted.
- Applications for PhD programmes must be accompanied by a research proposal of at least 1,000 and up to 3,000 words.

If you are applying for a PhD programme, or for the MA in Visual Anthropology, you will need to send the additional materials separately as an attachment to an email, or as hard copy in the post.

Deadlines for applications

The courses do not have formal deadlines and applications can be received right up until September. However, you are encouraged to submit your application as soon as possible. In particular, if you wish to apply for ESRC or Discipline Area funding (see 'fees and funding') you are strongly advised to apply for a place as early as possible – before 1 March (and preferably earlier) for ESRC. See:

www.manchester.ac.uk/socialsciences/postgraduate/taught/funding/index.html

The Visual Anthropology course is capped at 24 students, with 12 on each pathway. Places are allocated on a first-come, first-served basis to suitably qualified applicants. You will normally receive a response within two weeks of your application being received. Applications received after the places have been filled will be placed on a reserve list. These lists are always very active, so it is worthwhile applying at any point in the year.

For further advice on application processes, contact the Postgraduate Admissions Office:
pg-soss@manchester.ac.uk

We are generally in a position to give you a formal offer within four weeks of receiving an application. Many applicants have to be in receipt of a formal offer of a place before they are even eligible to apply for any funding. This is another good reason for getting your application to us without delay.



English language requirements

Advanced study in Social Anthropology requires a good capacity to both read and write English. Our teaching and assessment methods also necessitate a good capacity to communicate orally in English. For these reasons, overseas applicants whose first language is not English should pay particular attention to our language requirements (details below). For further details see:

www.manchester.ac.uk/socialsciences

If your first language is not English, you must attain one of the following:

IELTS – Overall 7, writing score 7

TOEFL – Overall 623, TWE 5 (PBT)

TOEFL – Overall 100, with 25 in each of the four sections (IBT)

Applicants with scores below our requirements may be eligible to attend one of our pre-session English courses. Duration will be confirmed when an official result has been received.

Exemption to the requirements is at the discretion of the School. Applicants who have been taught and assessed in English on previous degrees may still be required to show proof of English proficiency via TOEFL/IELTS.

TOEFL certificates – Please designate The University of Manchester as a recipient of your result. The code is 0757. Results must come directly from ETS (TOEFL). Test scores are valid for two years.

programme details

taught courses

MA and PGDip in Social Anthropology

(Incorporating masters and diploma with Visual pathway)

Duration MA: 12 months full-time; 24 months part-time

Duration PgDip: 9 months full-time; 21 months part-time

The general objective of the MA in Social Anthropology is to enable you to develop an anthropologically informed understanding of the lives of people in both Western and non-Western societies. Through confronting you with the diversity of human social and cultural experience, it encourages you to develop a critical approach to taken-for-granted assumptions and understandings. This course also provides you with certain transferable academic skills, such as conducting bibliographic research, basic computing skills, using the internet as a research tool, making seminar presentations and effective essay-writing.

The course has been designed with several different constituencies of student in mind. The standard MA can be tailored to students with different amounts of training in social anthropology:

Normal track: Intended to bring you to an advanced level of knowledge in the discipline sufficient to proceed to a research-based degree course. This track provides a basic grounding in social anthropology and allows you to tackle certain specialist fields within the discipline. Particularly suited to those who have a first degree in another field.

Research methods track (fast-track): For those who, having some previous academic experience of social anthropology or a closely related field, specifically intend to pursue doctoral research in social anthropology. You are encouraged to take a particular set of research methods options within the core course units, which lead directly into the more advanced research training offered in the first year of the doctoral programme.

Visual pathway: Allows you to take a number of course units focusing on Visual Anthropology. Many of these units are open to standard MA students; the Visual pathway simply highlights a theme in which Social Anthropology at Manchester specialises. However, subject to numbers, students on the Visual pathway can also take a course unit that is usually not open to other students on the MA in Social Anthropology (see below for details).

The availability of course units with a visual theme varies from year to year, according to staff leave and similar considerations, and the exact combination is decided according to your individual background and goals. In some years, more visual options may be available than in others.

Course outline

On the normal track, you are required to take eight 15-credit course units, including four core course units:

- Key Approaches in Social Anthropology
- Contemporary Debates in Social Anthropology
- Ethnography Reading Seminar
- Images, Texts and Fieldwork, or Issues in Ethnographic Research 2

On the research methods track, or fast track, you take two methods courses (Issues in Ethnographic Research 1 and 2), instead of the latter two options. You are then presented with a broad range of both regional and thematic options, from which you must select four. These options change from year to year, but in recent years have included:

- Anthropology, Globalisation and Development
- Another Europe – War/Nation/Transformation
- Anthropology of Museums
- Medical Anthropology
- Contemporary Issues in the Social Anthropology of the Middle East
- Anthropology of Modern Knowledge
- After Utopia
- New Reproductive Technologies
- Objects of Analysis
- Visual Culture and Media
- Screening Culture
- Anthropology of Amazonia
- Anthropology of Development

All students on the MA course are required to write a 12,000 to 15,000-word dissertation over the summer vacation and to present it in mid-September.

Visual pathway

If you are taking the Visual pathway, you will normally take the MA core course units (including Images, Text and Fieldwork, which has a strong visual component) and two more units that focus on visual anthropology (for example, Anthropology of Vision, Senses and Memory, and Screening Culture). In addition, you will take Documentary and Sensory Media, a course unit designed for the MA in Visual Anthropology that is double weighted at 30 credits.

Diploma in Social Anthropology

The diploma follows the same content as the MA course, but without the requirement to prepare a dissertation over the summer vacation. Fees are correspondingly reduced. The diploma course ends with the examinations presented in May to June.

Entry requirements

Applicants for the MA must normally have an Upper Second or First class Honours degree, according to UK conventions, or an equivalent degree from a European or overseas university, in an appropriate subject. These equivalences will be assessed by a system developed by the University on the basis of British Council recommendations. Many subjects can be regarded as suitable backgrounds for postgraduate study in social anthropology. Decisions on the appropriateness of an applicant's prior academic training are made on an individual basis.

Applicants without the necessary prior degree qualifications may be admitted in the first instance to the diploma, with the possibility of being upgraded to masters status subject to satisfactory performance in course work in the early phases of the course.



MA in Visual Anthropology

Duration: 12 months, full-time

The MA in Visual Anthropology is delivered mainly by staff in the Granada Centre for Visual Anthropology (although the availability of particular members of GCVA staff may vary from one year to another, according to research leave arrangements).

The Centre is internationally recognised for its practice-based approach to research and teaching.

The Granada Centre for Visual Anthropology

The GCVA was established in 1987 with the aid of contributory funding from Granada Television, a once-regional production company that has now become part of the largest commercial broadcast company in the country: Independent Television.

Over subsequent years, the Centre has built diverse links with the television industry, particularly the independent sector that services Channel 4, BBC2 and BBC4. Many MA graduates have gone on to work in this area of media production.

In recent years, the Centre has developed a range of interests that go beyond the purely visual aspects of social life. It was in order to promote research into the full range of these interests that EIDOS was set up. The name of this research unit refers to the Greek term that combines references to 'sight' and 'idea', while EIDOS is also an acronym standing for 'Ethnography, Images, Documents, Objects, Sounds, Senses'. Whereas the GCVA has largely been concerned with teaching, EIDOS acts as a vehicle for both practice-based and text-based research activities.

International reputation

The Granada Centre plays a leading role in the international network of visual anthropology. It has acted as the host of the International Ethnographic Film Festival of the Royal Anthropological Institute on three occasions, most recently in 2007. Staff have given seminars and film screenings, and run workshops, in Argentina, Brazil, Mexico, Malawi, Venezuela, South Africa and many European countries. The Centre also advised on the establishment of the East Asia Institute of Visual Anthropology in Kunming, Yunnan, in the People's Republic of China.

Every year, we produce documentaries shot by students and staff in locations all over the world. Many of these have been screened at international ethnographic film festivals, such as the Bilan Ethnographique of the Musée de l'Homme in Paris;

programme details

taught courses

the Göttingen International Ethnographic Film Festival; the Margaret Mead Festival of the Museum of Natural History in New York; Beeld voor Beeld in Amsterdam; the Festival dei Populi in Florence; the Mostra do Filme Etnográfico in Rio de Janeiro; and the Ethnographic Film Festival in Taipei, Taiwan. An MA graduate film also won the documentary prize at the Exposures Student film festival in Manchester, 2006.

Most of these films are distributed by the Centre on a non-commercial basis. See the Granada Centre website for further details:

www.manchester.ac.uk/socialsciences/disciplines/socialanthropology/visualanthropology

The Centre also organises more local public events, including the annual Forman Lecture, the Visual Anthropology students' annual Graduation Screenings and the Visual Dialogues seminars, which the Centre co-hosts with the Centre for Screen Studies in the School of Arts, Histories and Cultures.

Budding filmmakers

A distinctive feature of the MA is the practical, hands-on course in ethnographic documentary filmmaking, based on excellent facilities provided by the University's Media Centre. All technical instruction is given on lightweight, professional digital video cameras and sound recording equipment of similar quality. Editing tuition is given on non-linear digital edit suites using Avid Express Pro software packages.

You are expected to pay a graduated series of 'bench fees', on top of the normal postgraduate tuition fees, to meet the cost. The level of fee paid is related to proportion of hands-on instruction in the particular degree or pathway that you have chosen. This additional bench fee is subsumed within a single fee incorporating both tuition fees and bench fees. You are also expected to meet the cost of all tapes and other consumables, as well as all travel and subsistence expenses.

Course outline

This course is intended for those who wish to acquire practical documentary filmmaking skills, within the context of the comparative and historical study of visual culture and the exploration of anthropologically informed theories of observation and visual representation.

Depending on the particular options you take, you may also gain practical experience with other media, such as photography, museum collections and electronic audio-visual media, including sound recording. These are all considered alongside films as alternative forms of representation in anthropology.

Upon admission, students are distributed across two distinct 'pathways': Ethnographic Documentary with Sensory Media pathway (EDSEM) and Ethnographic Documentary with Film pathway (EDF). These vary according to the balance between practical hands-on film training course units and more theoretical course units.

Ethnographic Documentary with Sensory Media (EDSEM) pathway

You normally take:

- Ethnographic Documentary
- Anthropology of Vision, Senses and Memory
- Documentary and Sensory Media
- Screening Culture
- Images, Text, Fieldwork

You will also take course units chosen from a range of regional and research methods options, and will present a written dissertation of 8,000 to 12,000 words, supported by visual materials such as a short film, a photographic essay, or other audio or visual production.

Ethnographic Documentary with Film (EDF) pathway

You normally take:

- Ethnographic Documentary
- Beyond Observational Cinema
- Anthropology of Vision, Senses and Memory
- Screening Culture
- Images, Text, Fieldwork

You will also take a course chosen from a range of regional and research methods options, and will produce a final project consisting of the making of documentary film of up to 30 minutes, supported by a short 'companion text' of between 2,500 and 5,000 words.

Dissertations and visual media productions

Before beginning work on your dissertation or final project, you must present your ideas in the form of a proposal.

In principle, students on both pathways can go anywhere in the world to carry out the necessary field research and shoot their films, or collect other visual materials, provided they present a well thought-out proposal. Some students have been to the most distant corners of the globe (New Zealand, Thailand, Malawi, the Andes, etc), while others have chosen to make their films a few hundred yards from the University (amongst the homeless, in a local beauty parlour, on music in multicultural education, etc).

We encourage you to start your research as soon as possible after mid-May and certainly by mid-June, since you have to be back at university to begin editing your project by September at the latest. It is expected that all final projects will be based on fieldwork of at least two months' duration.

Students on the EDSEM pathway who intend to submit visual media productions will be expected to work with their academic supervisor to determine schedules for co-ordinating the production of visual and written materials, the collection of which may involve fieldwork.

You are expected to provide your own equipment for the production of visual materials, although some limited access to Granada Centre facilities may be possible, subject to availability.



Entry requirements

This course has been designed on the assumption that you already have a first degree in social or cultural anthropology, or a closely related field, so only those with such qualifications are likely to be admitted directly onto the course. If it is a first degree, it should normally be an Honours degree in which you were awarded an Upper Second or First class grading, according to UK conventions, or an equivalent grading from a European or overseas university. These equivalences will be assessed by a system developed by the University on the basis of British Council recommendations.

Those without such relevant qualifications are usually encouraged to take the masters or diploma in Social Anthropology as a preliminary year. Subject to satisfactory performance in this first year, you can then be considered for admission to the MA in Visual Anthropology.

Applying

You should indicate which pathway you wish to be considered for. Given the strict capping on each of the pathways and the popularity of the EDF pathway, applicants applying for this pathway are advised to indicate whether they will also consider the EDSEM pathway.

Demand for places on this course generally exceeds supply, thus making selection difficult. In the assessment of applications, particular importance is placed on a good record of academic achievement in anthropology, or a closely related degree. In addition, however, we look for candidates who can demonstrate a developed intellectual interest in films, or other visual media; or, more generally, in the visual arts.

If you have already some practical experience, this would certainly strengthen your application. However, this previous experience need not be specifically in filmmaking; evidence of aptitude in the use of other visual media – photography, graphic arts, painting, etc – would serve equally well.

Please note that the MA in Visual Anthropology operates a system of deadlines for applications. See 'How to apply' on page 8 for further details.

programme details

research programmes

MA in Anthropological Research

(recognised by ESRC for 1+3 awards)

**Duration: 12 months full-time;
24 months part-time**

This course is designed to prepare you to carry out doctoral level research. It therefore provides training in a wide range of research methods and shows you how to develop a substantive research topic in a theoretically and methodologically informed way. It has been recognised by the Economic and Social Research Council as delivering the kind of research training required under its '1+3' doctoral funding model.

Although primarily intended as preliminary to doctoral research, this course is also available as a stand-alone MA degree.

Course outline

The course aims to deliver comprehensive in-depth training in the methods and issues involved in doing research in social science in general and anthropology in particular. You will be introduced to a range of quantitative and qualitative approaches and trained in how to conceptualise and carry out research of an ethnographic nature.

You attend a range of research methods course units and seminars offered within Social Anthropology, including the Postgraduate Research Seminar and the Departmental Research Seminar. In addition, you work with your supervisor to produce either one or two assessment essays under the rubric of two courses, entitled Independent Theoretical and Ethnographic Analysis 1 and 2.

This work is aimed specifically towards preparation for the dissertation and, beyond that, for the doctoral research topic that you intend to pursue after the completion of the MAAR programme. Alternatively, instead of the second of these course units, you can select from the list of options given above in the section dealing with the MA in Social Anthropology.

You also attend course units offered in the School of Social Sciences. The School offers a series of short units covering a range of generic research skills. There is a quantitative methods course unit, compulsory for ESRC-funded students, which covers data analysis, surveys and sampling. You also select from a range of short course units covering more qualitative skills such as:

- Doing Interviews
- Elite Interviews
- Memory, History and Narrative
- Photography as a Research Method
- Focus Groups for Social Research
- Participant Observation
- Participatory Action and Learning
- Content Analysis
- Archival Research

You are expected to write a 12,000 to 15,000-word dissertation over the summer vacation period and present this in September. Ideally, the topic will also be the one in which you intend to specialise at PhD level and the dissertation will, in effect, be a doctoral fieldwork proposal.

Entry requirements

You must normally have a previous degree in social anthropology, or in which social anthropology formed a major component. If it is a first degree, it should normally be an Honours degree in which you were awarded an Upper Second or First class grading, according to UK conventions, or an equivalent grading from a European or overseas university. These equivalences will be assessed by a system developed by the University on the basis of British Council recommendations.

Supervision in the research degrees of MPhil and PhD is offered across a wide range of themes and geographical areas. Consult the list of academic staff and their research interests for a guide. Some idea of the scope of supervision offered can also be gained from the list of current PhD students' research topics (see below). More information can be found on the Social Anthropology website. Applicants for research programmes should contact Social Anthropology for advice about the availability of supervision for the topic they wish to pursue; staff may be on research leave at particular times.

MPhil in Social Anthropology

**Duration: 12 months full-time;
24 months part-time**

This programme is intended for those with a previous degree in social anthropology, or a closely related field, who wish to engage in original anthropological research without committing themselves to the extent required by a PhD programme.

You work together with a supervisor to produce a thesis of 35,000 to 40,000 words. Research for this may involve a brief period of fieldwork, but need not necessarily do so, and is usually primarily library or archive-based. You will also normally be involved in coursework, though the precise number and nature of course units will depend on your previous qualifications and research interests.

MPhil in Visual Anthropology

**Duration: 12 months full-time;
24 months part-time**

(potential six-month extension for filmmaking purposes)

This programme is intended for those who have taken the MA in Visual Anthropology (or a similar degree elsewhere), who then wish to engage in further original research, but without committing themselves to the PhD with Visual Media programme. If the making of an ethnographic film is involved, an extension of six months is normally granted.

You work together with a supervisor to produce a thesis. This may involve original fieldwork and the making of an ethnographic film of a maximum duration of 40 minutes. However, it may also be based entirely on second-hand bibliographic and filmographic, or other visual media, sources. In the latter case, the length of the thesis should normally be in the range of 35,000 to 40,000 words. If a film is produced, the required wordage is reduced to 25,000 words. In this case, although the text will be of paramount importance, the film will be regarded as an integral and necessary aspect of the work submitted.

You will also normally be involved in coursework, although the precise number and nature of course units that you take will depend on your previous qualifications and research interests.

Please note: students who intend to make a film may wish to supply their own equipment. The Granada Centre and the University Media Centre will generally be able to supply production and post-production equipment respectively, but in this case a bench fee may be payable, depending on the precise extent of use.

MPhil in Ethnographic Documentary

**Duration: 12 months full-time;
24 months part-time**

This programme is designed for those with an MA-level qualification in social and/or visual anthropology, or a related field, as well as the necessary film competence, who wish to carry out a substantial film project based on first-hand ethnographic fieldwork. Students who have completed the MA in Visual Anthropology may use it as a means to develop their ethnographic filmmaking skills to a higher level.

You work closely with a supervisor to prepare your film project. Although this will involve a considerable degree of independent study, supervisors may also recommend that you register for course units that could contribute to the development of your film projects. While supporting written texts may also be produced, probably in the context of one or more multimedia DVDs (maximum duration four hours), it is envisaged that the principal outcome will be one or more substantial documentary films presented in lieu of a written dissertation.

Please note: you are normally expected to supply your own equipment. If you cannot, the Granada Centre and the University Media Centre will generally be able to supply production and post-production equipment respectively; however, in this case, a bench fee may be payable, depending on the precise extent of use.

PhD in Social Anthropology

Duration: Maximum four years

(possible six-month extension for language-learning)

This programme involves substantial original research, normally including fieldwork of 12 to 18 months and leading to the production of a thesis of about 80,000 words. Those who have to learn a difficult language may be granted six months of additional time to



programme details

research programmes

complete the PhD. During this period, you are required to pay two years of full fees, one year of reduced fieldwork fees and, if you exceed three years, a nominal 'writing up' fee. (See 'fees and funding' below for further details).

You will work under the direction of a team of at least two supervisors. You will have most contact with your principal supervisor, while the other supervisor(s) will typically provide advice in specialist fields of interest and/or cover when the principal supervisor is absent on research leave, or for other reasons.

At the end of your first year of study, you will need to show evidence of satisfactory progress and an ability to proceed with the programme. To meet this requirement, by the end of your first year (or second year if part-time), you must pass at a satisfactory standard all assessment in your first year courses, and have made progress on the development of your thesis.

Pre-fieldwork training

In the first year of this programme, you follow largely the same regime as other doctoral students. You will follow many of the research training course units offered under the MA in Anthropological Research (unless you have already completed the MA in Anthropological Research, or an equivalent research training masters elsewhere).

In order to proceed with the doctoral programme, at the end of the first year you have to present a 12,000 to 15,000-word research proposal, which must be defended in a viva with two internal examiners.

For many PhD-track students, learning a foreign language is a necessary preliminary to fieldwork, and this too forms an integral part of pre-fieldwork training.

Fieldwork

You may carry out fieldwork in any part of the world, provided that you present a satisfactory research proposal. In addition to possessing academic merit, the proposal must give grounds for confidence that you are capable of managing the practical circumstances of fieldwork, including the all-important legal and ethical considerations, and any potential linguistic difficulties, or local political challenges.

During fieldwork, you remain in regular contact with your principal supervisor by means of monthly reports. You are expected to carry out at least 12 months fieldwork. If you have been able to proceed to the field quickly, you may be allowed longer, but in no circumstances should this exceed 18 months.

Writing up

Previous experience suggests that the writing up of an 80,000 word doctoral thesis in anthropology usually takes more than a year and often as long as two years. However you divide the available time between fieldwork and writing, you must finish within four years.

Entry requirements

You must normally have a masters degree in social anthropology, or a closely related field. The combination of an undergraduate degree in social anthropology, plus a masters degree in a different but related field, is also acceptable. Your first degree should normally be an Honours degree in which you were awarded an Upper Second or First class grading, according to UK conventions, or an equivalent grading from a European or overseas university. For your masters degree, you must normally have achieved a pass of a satisfactory standard. These equivalences will be assessed by a system developed by the University on the basis of British Council recommendations.

PhD in Social Anthropology with Visual Media

Duration: Maximum four years

(possible extra six months, for filmmaking or language-learning purposes)

This programme is intended for those with a first degree in social or cultural anthropology who wish to use visual media in the course of pursuing doctoral research. This is made possible by regulations approved by the University Senate that recognise that, although a written text should continue to be of "paramount importance", films and other visual media may be included as an "important and integral" aspect of the materials submitted by a doctoral candidate. In consideration of the importance of the visual material, it is recognised that the text may be shorter than that of a normal doctoral thesis.

In common with all other PhD students in Social Anthropology, those enrolled on this programme are expected to carry out an original research project in the course of a minimum 12-month period of fieldwork. Library or archive-based projects consisting exclusively of the analysis of the visual productions of third parties, or of the analysis of purely theoretical issues in visual anthropology, would not normally be considered appropriate.

The normal maximum duration of the programme is four years, although if you intend to make a film or engage in other visual media work during your fieldwork, you are generally granted an additional six months, as are those who have to learn a difficult language. During this period, you are required to pay two years of full fees, one year of reduced fieldwork fees and, if you exceed three years, a nominal 'writing up' fee. If you take the hands-on training courses in your first year, you are required to pay a 'bench fee'. The level of this bench fee will depend on whether you take one or both hands-on training courses (see 'Fees and funding' below for further details).

Pre-fieldwork training

In the first year, you will follow largely the same regime as other Social Anthropology doctoral students. This means you are not required to take all the generic training courses delivered by the School of Social Sciences.

Furthermore, your participation in certain of Social Anthropology's own training courses may be waived or deferred, so as to enable you to take the hands-on filmmaking core courses, Ethnographic Documentary and Beyond Observational Cinema, and/or Anthropology of Vision, Senses, and Memory, and Documentary and Sensory Media.

At the end of this first year, you must show evidence of satisfactory progress, achieving passes in all assessed course units at an approved level. In addition, prior to beginning fieldwork, you are required to present a 12,000 to 15,000-word research proposal, which must be defended in a viva with two internal examiners.

Fieldwork

On this programme, you carry out fieldwork under the same general terms and conditions as other doctoral students. However, given that you may have started the programme somewhat later, you and your supervisors will need to bear this in mind when determining the duration of the fieldwork.

You are encouraged to use visual media in combination with other more conventional research methods and strategies in a complementary manner. However, the precise way in which visual media may be used in the field will greatly depend on the nature and circumstances of the research – for example, as:

- Documentaries about specific events that lend themselves particularly well to visual treatment

- Visual diaries as an adjunct to field notes; for purely descriptive purposes; to support the detailed analysis of some particular issue; to generate visual material for "feedback" interviews or reflexive commentary; or to explore modes of visuality
- A combination of one or more of these purposes

Writing up and editing

In the post-fieldwork stage, you are encouraged to engage in writing up your field notes and in editing your visual material in such a way that the two reinforce and complement one another. But, given the need to carry out both processes, previous experience demonstrates that students have to work hard to complete on time, even given the additional six months allowed for the preparation of the visual material.

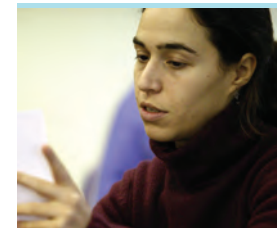
Materials and equipment

For the training courses offered in the first year of the programme, you are provided with all necessary equipment in exchange for payment of the obligatory 'bench fee' (see 'fees and funding' below). However, in common with all other students on the hands-on courses, you are required to supply your own tapes and other materials, as well as meet all travel and subsistence costs during the training period.

For fieldwork purposes, you normally have to provide your own production equipment. You may also find it more convenient to provide your own portable editing system, which you use once you return to Manchester for writing up. If neither of these were possible, then the Granada Centre and the University's Media Centre facilities would be available, though in this case a commensurate level of bench fees would be payable (see 'fees and funding').



staff research interests



Please note that you are advised to contact Social Anthropology to ascertain the availability of particular members of staff for tuition and supervision during your year of entry.

Teaching and research staff

Dr Rupert Cox

Location: Arthur Lewis Building 2.060
tel +44 (0)161 275 0570
email rupert.cox@manchester.ac.uk
(On research leave in the first semester)

Lecturer in Visual Anthropology 2003-4;
PhD Edinburgh 1998

Regional specialisations: asceticism and the traditional arts in Japan; the visual history of mutual perceptions of Japan and Europe following the first contacts in the 16th century; history and culture of Orientalist automata. Theoretical specialisations: visual history of anthropology, history and memory, museums and heritage displays.

Professor Jeanette Edwards

Location: Arthur Lewis Building 2.051
tel +44 (0)161 275 3997
email jeanette.edwards@manchester.ac.uk
(On research leave in the first semester)

Professor of Social Anthropology, PhD Manchester, 1990

Regional specialisation in Britain, fieldwork in northern England, including work with voluntary organisations, community health and social service providers; topical interests include the relationship between language, social class and identity, social implications of new reproductive technologies, kinship and expertise, public understanding of science.

Dr Gillian Evans

CRESC, Waterloo Place
email gillian.evans@manchester.ac.uk

RCUK Fellow, PhD Brunel 2002

Regional specialisation: UK and Europe. Topical interests include anthropology and education, child development, kinship, community and urban history; the politics of place, social class, gender, race and culture.

Dr Ian Fairweather

Location: Arthur Lewis Building 2.067
tel +44 (0)161 275 3996
email ian.fairweather@manchester.ac.uk

Lecturer, PhD Manchester 2002

Regional specialisation in Namibia; topical interests include museums, heritage, postcolonialism, religion.

Professor John Gledhill

Location: Arthur Lewis Building 2.052
tel +44 (0)161 275 3986
email john.gledhill@manchester.ac.uk
(On research leave in the second semester)

Professor of Social Anthropology, B.Litt, Oxford 1973

Regional specialisation in Mexico and Central America; topical interests include rural poverty, agrarian change and international migration, comparative political systems, social movements and the politics of human and indigenous rights, historical anthropology.

Professor Nina Glick-Schiller

Location: Arthur Lewis Building 2.049
tel +44 (0)161 275 7106
email nina.glickschiller@unh.edu
PhD Columbia 1975

Regional specialisation in USA, the transnational Caribbean, Haiti and Germany. Nina joined the University in 2007 as the first Director of the University's new Research Institute for Cosmopolitan Cultures (RICC). She is based in Social Anthropology. Her topical interests include transnational processes and globalisation; the migration process in comparative perspective; long distance nationalism; ethnicity, identity, and racialisation; globalisation, theories and methods of transnational studies; medical anthropology/sociology; social theory, ethnographic research methods.

Professor Maia Green

Location: Arthur Lewis Building 2.053
tel +44 (0)161 275 3995
email maia.green@manchester.ac.uk

Professor of Social Anthropology, PhD London School of Economics 1993

Regional specialisation in East Africa (Kenya and Tanzania), fieldwork among Pogoro Catholics, Southern Tanzania; topical interests include the anthropology of religion, political participation and anti-witchcraft movements. Professional expertise in social development addresses poverty, gender, participation, local government, civil society, education and health.

Professor Sarah Green

Location: Arthur Lewis Building 2.054
tel +44 (0)161 275 3989
email sarah.green@manchester.ac.uk

Professor and Head of Social Anthropology Discipline Area, Professor of Social Anthropology, PhD Cambridge 1992

Regional specialisation in Britain and Greece, fieldwork in London and Epirus (northwestern Greece); topical interests include personhood and identity, gender and sexuality, land use, social memory and concepts of the environment.

Professor Penelope Harvey

Location: Arthur Lewis Building 2.055
tel +44 (0)161 275 0572
email penny.harvey@manchester.ac.uk
(On research leave in the first semester)

Professor of Social Anthropology, PhD London School of Economics 1987

Regional specialisation in South America and Europe, fieldwork in Peruvian Andes and Spain; topical interests include language, politics, gender, history, visual anthropology, anthropology of technology.

Professor Paul Henley

Location: Arthur Lewis Building 2.061
tel +44 (0)161 275 3988
email paul.henley@manchester.ac.uk

Professor and Director, Granada Centre for Visual Anthropology, PhD Cambridge 1979

Regional specialisation in South America, fieldwork among Amerindian and Black communities in Venezuela; topical interests include history, practice and ethics of ethnographic film-making; history and culture of the indigenous peoples of Amazonia; performance and popular culture in the Hispanic Caribbean.

Dr Andrew Irving

Location: Arthur Lewis Building 2.058
tel +44 (0)161 275 399
email andrew.irving@manchester.ac.uk

RCUK Fellow, PhD School of Oriental and African Studies, London, 1999

Regional specialisation: Kampala, Uganda and New York, USA. Topical focus on experiences of illness, death and dying (especially from HIV/AIDS), in relation to the aesthetic appreciation of time, existence, and otherness; also phenomenology, art, performance and creativity, time, comparisons of personhood, religious change, gender and urban experiences.

Dr Stef Jansen

Location: Arthur Lewis Building 2.056
tel +44 (0)161 275 3993
email stef.jansen@manchester.ac.uk
(On research leave in the second semester)

Senior Lecturer in Social Anthropology, PhD Hull 2000

Regional specialisation in post- Yugoslav and other post-communist states; topical interests include displacement, experiences of 'home', identity, nationalism, resistance and memory, war, violence and ethnic cleansing.

Dr Petra Tjitske Kalshoven

Location: Arthur Lewis Building 2.065
tel +44 (0)161 275 3488
email Petratjitske.Kalshoven@manchester.ac.uk

Temporary Lecturer in Social Anthropology,
PhD McGill 2006

Fieldwork in England, Germany, France, the Netherlands, and Belgium among historical re-enactors, gamers, and miniature-makers. Topical interests include practices of play and imitation; social productions of knowledge; material culture and human-thing relationships, in particular miniatures (tin figurines) and dioramas as special forms of human representation; museum anthropology; conceptions of indigeneity; identity play, rhetoric, and cultural appropriation; anthropology of landscape and art; anthropology of the senses.

Dr Jens Kjaerulff

Location: Arthur Lewis Building 2.064
tel +44 (0)161 275 2460
email Jens.Kjaerulff@manchester.ac.uk

Temporary Lecturer in Social Anthropology;
PhD Aarhus 2005

Regional specialisation: East and South Asia; Europe. Topical specialisation: anthropology of knowledge, technology and cultural process; research methods; economic anthropology, anthropology of work and organisations, complex societies; internet; flexibility; telework.

staff research interests



Dr Adi Kuntsman

Location: RICC Arthur Lewis Building 2.007
tel +44 (0)161 306 6934
email Adi.Kuntsman@manchester.ac.uk

Leverhulme Fellow, PhD Lancaster 2007

Regional specialisation: Israel/Palestine, post-Soviet Diaspora, Russian-speaking immigrants. Interests include: anthropology of migration and Diaspora; nationalism and colonialism; gender, sexuality and race; Internet cultures; war, conflict and new media; cultural politics of emotions.

Mr Andrew Lawrence

Location: Arthur Lewis Building 2B29
tel +44 (0)161 306 6911
email andy.lawrence@manchester.ac.uk

Teaching Associate and Film-Maker in Residence in Visual Anthropology, 2004, MA in Visual Anthropology 1997

Independent film-maker, making drama and documentary films for BBC and Channel 4.

Professor Sharon Macdonald

Location: Arthur Lewis Building 2.058
tel +44 (0)161 275 3990
email sharon.macdonald@manchester.ac.uk
(On research leave in the first semester)

Professor of Social Anthropology; DPhil Oxford, 1987
Culture, collective identities and representation; especially in relation to national, regional and super-national (especially European) identities, museums, histories and science; 'history work' in relation to the Nazi past in Germany.

Dr Keir Martin

email keir.martin@manchester.ac.uk
(On research leave 2009-10)

Lecturer in Social Anthropology, PhD Manchester 2006

Regional specialisation in Melanesia. Topical interests include morality and values in contexts of social change and neo-liberalisation, globalisation, processes of increased integration into a global cash economy, exchange, political economy.

Dr Michelle Obeid

Location: Arthur Lewis Building 2.007
+44 (0)161 306 6934
email Michelle.Obeid@manchester.ac.uk

Research Fellow at the Centre for Advanced Studies of the Arab World, PhD London School of Economics 2006

Regional specialisation in Middle East and Middle Eastern Diaspora populations. Topical interests include kinship in relation to social, economic and political change; idioms of closeness in marriages, households and lineages; border zones; gender and development; migration and Diaspora.

Dr Madeleine Reeves

Location: CRESC, 178 Waterloo Place
email Madeleine.Reeves@manchester.ac.uk

RCUK Fellow at the Centre for Research on Socio-Cultural Change; PhD University of Cambridge 2008

Regional specialisation in Central Asia. Topical interests include the anthropology of the state; migration and transnationalism; everyday ethnicity and its relation to official nationalisms, and experiences of borderland militarisation.

Dr Darien Rozentals

Location: RICC Arthur Lewis Building
email Darien.Rozentals@manchester.ac.uk

Regional specialisation: UK, Baltic States, Australia. Research interests include the politics of memory, monuments and industrial ruins, contemporary art, memory and spatial studies, critical theory.

Dr Anthony Simpson

Location: Arthur Lewis Building 2.012
tel +44 (0)161 275 4896
email anthony.simpson@manchester.ac.uk or
tony.simpson@manchester.ac.uk

Lecturer, PhD Manchester 1996

Regional specialisation Central and Southern Africa; topical interests include identity, education, Christianity, missionaries, religious conversion, medical anthropology, HIV/AIDS, death, masculinities, childhood.

Professor Karen Sykes

Location: Arthur Lewis Building 2.057
tel +44 (0)161 275 3992
email karen.sykes@manchester.ac.uk

Professor of Social Anthropology, PhD Princeton 1995

Regional specialisation Oceania (especially Melanesia); topical interests include cultural anthropology, practice theory, epistemology, violence, kinship and exchange, education and socialisation, national culture, public anthropology.

Dr Angela Torresan

Location: Arthur Lewis Building 2.059
tel +44 (0)161 275 2518
email Angela.Torresan@manchester.ac.uk

Lecturer in Visual Anthropology; PhD Manchester 2004

Regional specialisation: Brazil, Portugal. Topical interests include visual anthropology, migration, transnationalism, ethnic identities, art and identity, territoriality, indigenous identity and cultural "traditions".

Dr Soumhya Venkatesan

Location: Arthur Lewis Building 2.063
tel +44 (0)161 275 3917
email soumhya.venkatesan@manchester.ac.uk
(On research leave 2009-10)

Lecturer, PhD Cambridge, 2002

Regional specialisation in South Asia, especially India. Topical interests include art and craft production; weaving; the agency of objects; development and Islam.

Professor Peter Wade

Location: Arthur Lewis Building 2.062
tel +44 (0)161 275 3991
email peter.wade@manchester.ac.uk

Professor of Social Anthropology, PhD Cambridge 1985

Regional specialisation in Latin America, specifically Colombia and other Latin American countries with Black populations, fieldwork among Blacks in Colombia; topical interests include ethnicity, race and racism, black culture and identity, urban anthropology, race and genomics.

Professor Richard Werbner

Location: Arthur Lewis Building 2B27
email Richard.Werbner@manchester.ac.uk

Professor Emeritus of African Anthropology, PhD Manchester 1968

Regional specialisation in South-Central Africa, fieldwork among the Kalanga (Zimbabwe and Botswana) and Tswapong (Botswana); topical interests include ritual, personal and historical narrative, politics, law, regional analysis.

Mr Leslie Woodhead OBE

Honorary Lecturer in Visual Anthropology and Honorary Companion of the University of Manchester

Although perhaps best known for his many documentary works (including eleven for the now-discontinued classic series "Disappearing World"), he has also made a number of high profile political drama-documentaries, as well as "Endurance", a Hollywood feature about an Ethiopian Olympic gold medal winner.

student thesis topics

This list gives a selection of current topics being researched for PhD degrees and supervised by academic staff in Social Anthropology (* = PhD Social Anthropology with Visual Media)

Araújo, Natalie – Sin dejar: the cosmopolitan negotiations of Colombian migrants in London

Atkins, Michael* – Looking for business: social and visual ambiguity of men that sell sex on the street

Brković, Čarna – Home on the transforming Bosnian-Serbian border

Brown, Hannah – Constructions of womanhood among Luo women in Western Kenya involved in voluntary health care programmes

Bullen, Claire – Everyday cosmopolitanism in Liverpool and Lyon? Developing a comparative framework of inter-ethnic relations at the city-level

Čelebičić-Arielli, Vanja – Home on the transforming Bosnian-Croatian border

Cheung, Chi Pui – Legality and legitimacy: land, development and rural cadres in a Chinese urbanised village

Cicalo, Andre* – Affirmative actions against racial inequality: the case of 'black' quotas in Brazilian public Universities

Corral Paredes, Carolina – The discourse and practices of the visual representation of the Raramuri people: past, present and future

Del, Pozo, Miguel – Who owns the fish? Puerto Rico's management policies in a contested environmental resource

Dixon, Laura – The only Brits in town: making the nation in a gay tourist town

Figueiredo Ana, Paula, Silva – Explorations of the Brazil/London cultural encounter within historical and economic contexts

Flynn, Alex – Artistic impression: empowerment and the MST

Gaspar, Andrea* – Beyond instrumentality: the expressiveness of technology in InteractiveDesign, Milan (Italy)

Geall, Sam – Environmental politics and pollution in rural China

Gordon, Doreen – Blackness and social mobility in Bahia, Brazil

Gore, Rachel – A piece of peace – community radio and the politricks of harmonizing dissent

Grossman, Alyssa* – Topographies of memory: everyday sites and practices of remembrance work in post-socialist Bucharest

Dokic, Goran – Between warfare and welfare: veterans' organisations and social security in rural Serbia

Hodges, Andrew – Physical scientists' networks and physics knowledge configurations after the break-up of Yugoslavia

Jaramillo Salazar, Pablo – Politics of performance and ideology of multiculturalism in the Colombian indigenous movement

Jordan, Laura – Going union: processes of organising, work and power in a Canadian unionisation campaign

Lewis, Camilla – Faith schools and community cohesion: how have communities in Blackburn and Darwen responded to the establishment of a Muslim faith school?

Lorenz, Jan* – 'Relentless dybbuk': the loss, the memory and the revival of Jewish life in post-socialist Poland.

Luna, Laura – Learning in diversity: ethnography of a multicultural British school

McComsey, Tiffany – The stolen generations: models of being, models of doing and the dialogues between them: 'post colonial' experiences of Aboriginal wellbeing in Redfern

Moise, Valentina – Identity, ethnicity and perception of sameness and otherness in the town of Gorizia, Nova Gorica

Montoya, Ainhoa – Echoes of the past: violence and political division in post-war El Salvador

Morgan, Jennifer – Change and everyday practice at the museum: an ethnographic study

Morelli, Camilla – World making and knowing among the Huaorani of Amazonian Ecuador

Poulton, George – Changing location and belonging amongst white working-class male football fans

Radu, Cosmin – New border regimes at the edge of empire: changing state and mobility practices in the making of the EU external border between Romania and Serbia

Rahman, Tanzima – True blues, blacks and in-betweens: changing categories of ethnicity in the wake of Maine Road and the approaching gentrification of Moss Side

Ramirez Sanchez, Martha Areli – The councils of good government: the transition from natural community to political community

Riedner, Lisa – The right to have rights? Negotiations of (un)documented migrant workers' 'rights' in Berlin and Munich

Remtilla, Aliaa – Ritual and religion amongst the Pamiri Ismailis of Tajikistan

Schaumberg, Heike – Neoliberalism and its frontiers: spontaneity, work and self-organisation. Remaking class based defiance in Argentina

Skipalis, Brandi – Genealogy, local identity and heritage tourism in Eyam

Staves, Sarah – Ethnic identity, nationhood and destination image in Nepal

Symons, Jessica – Contexts and complexes: exploring influences on decision making through artistic engagement to reveal the dynamics of capitalism and sustainability

Trinidad, Ana Raissa – Learning and indigenous people's education in the Southern Philippines

Upton, Mike – Patent fever: intellectual property and access to HIV treatment

Valencia, Lorena – Assisted mothers: embodied experiences of class, gender and race

Webster, Rachel* – The changing perceptions of childhood, space and Islam amongst the nomadic Bakarwals of Indian Kashmir

Wilde, Rachel – Developing persons through development: an ethnographic study of a gap year organisation

Zevallos, Raul* – Artisans, pilgrims and healers in the north of Peru

Recently passed theses

Bonifacio, Valentina – On the visual traces of an indigenous identity in Paraguay

Bornholdt, Luciano – Social reproduction and large scale projects

Boudreault-Fournier, Alexandrine – On the beat: composing with cultural policies and music in Cuba

Bryer, Alice – Workers' self-management in Argentina

Coxshall, Wendy – Rebuilding disrupted relationships: widowhood, narrative and silence in contemporary Ayacucho, Peru

Crossley, Paul – The culture of informality: anthropological perspectives on the informal sector in Mexico

Cubero, Carlo* – Translocal identities in Culebra, Puerto Rico: tracing musical and kinship connections in the north-eastern Caribbean

Fletcher, Rebecca – Teenage girls and the contraceptive pill

Grisaffi, Tom – Community media and cultural activism in the Chapare, Bolivia

Hawkins, Paul – Rhetorics of self: between dividual and individual in spiritual subjectivity

Kent, Michael – Indigenous people and protected areas: the use of state and customary normative systems in the regulation of territorial conflicts (Titicaca, Peru)

Martin, Keir – After the volcano: the language of custom and conflict in post-urban Papua New Guinea

McArthur, Gavin – Culture, ethnicity and politics of belonging: the case of Zanzibar

Moore, Penny – Situated creativity: musicians, identity and nationalism in Vienna

Navarro-Smith, Alejandra* – Collaborative indigenous filmmaking in the 'Community Human Rights Defenders Network' in Chiapas, Mexico

Oien, Cecile* – Invisible/visible: ethnic and gender identity among Angolan women living in Lisbon

Pickering, Lucy – Consuming place and embodying substance: making an alternative America in Hawaii

Pineiro, Joceny – Indigenous leadership and the politics of identity in contemporary Brazilian North East

Rickett, Michelle – Remembered place, cultural icon: locating memories of Cape Town's District Six

Rollason, William – Doubting persons: participatory and collaborative research in Milne Bay Province, Papua New Guinea

Sánchez-Vásquez, María – Social understanding and usage of scientific knowledge in Mexico

Sherrington, Richard – Developing disparities: consumption and social differentiation in post-adjustment Dar es Salaam

Simić, Marina – "Exit to Europe": state, travel, popular music and 'normal life' in a Serbian town

Strauss, Paul – Netculture and the politics of ethnic identity in an East London borough

Walmsley, Emily – Blackness and belonging: race, representation and embodiment in an Ecuadorian coastal city

Wormald, Tom – Visions of the future: the promise of new technology for the new civil society in Hungary

Wu, Guofu – New wine in old bottles: the role of local government in resettlement and development in south China

Yamakawa, Sayumi – Religion and social order: the impact of Christianity on marriage systems in Owamboland, Namibia



fees and funding



For up-to-date information on tuition fees, see:

www.campus.manchester.ac.uk/ssc/tuitionfees

Students registered for the PhD programmes pay a reduced fee during the year away on fieldwork, currently half the normal annual fee. Doctoral students will be charged only a nominal writing up fee in their fourth year.

For any queries relating to tuition fees, contact the Student Services Centre:

tel +44 (0)161 275 5000
email ssc@manchester.ac.uk

Bench fees

Bench fees are now incorporated into a single fee covering tuition fees as well as bench fees, and all students enrolled on the various visual anthropology programmes/courses are liable to pay bench fees to cover the cost of filmmaking equipment and facilities supplied either by the Granada Centre, or by the University Media Centre.

The level of bench fee charged varies according to the course and pathway concerned and the degree to which students are expected to make use of university facilities in any particular year of the programme. The payment of bench fees is required for the MA in Visual Anthropology, but may not be payable in the case of the MPhil in Ethnographic Documentary and PhD in Social Anthropology with Visual Media, if students supply their own audiovisual facilities.

Funding opportunities

You should start investigating funding your studies as soon as possible. For more information, consult the University website:

www.manchester.ac.uk/postgraduate/funding/search

Funding for MA degrees

Funding for masters courses is generally very scarce. Applicants from outside the UK (except USA) can apply to British Chevening Scholarships for masters level study:

www.chevening.com

Certain North American programmes (Fulbright, Marshall) may support US students enrolled on taught postgraduate degrees. German students may be able to attend a masters course in the UK, funded by the German government.

MA in Visual Anthropology

UK and EU applicants are eligible to apply for Arts and Humanities Research Council (AHRC) studentships allocated to the University of Manchester. MA Visual Anthropology applicants can apply under the Professional Preparation Masters Scheme. Non-British EU students receive "fees-only" grants (unless they have lived in the UK for the purpose of study for the three years preceding the start of the degree). For further details, see:

www.manchester.ac.uk/socialsciences/postgraduate/research/funding/ahrc

MA in Anthropological Research

The principal UK government funding agency, the Economic and Social Research Council (ESRC) uses a so-called '1+3' funding formula: one year ESRC-recognised research training MA, plus three years PhD. The MA in Anthropological Research is recognised by the ESRC. You have to apply for this funding as part of application for funding for a doctoral programme at the same time.

All major departments have been allocated a quota of ESRC 1+3 awards. Social Anthropology at Manchester has 1 ESRC quota (either 1+3 or a +3 award). Social Anthropology can also submit one applicant to an open ESRC (either 1+3 or a +3 award) competition. For ESRC funding, you must make an early application – by 1 March at the latest, and preferably before – and consult with your future supervisor(s). Please note that ESRC funding is open only to EU students and that non-British EU students receive "fees-only" grants (ie do not receive maintenance grants). For further details see:

www.esrc.ac.uk

Funding for PhD programmes

Details on a wide-range of funding opportunities can be found online:

www.manchester.ac.uk/postgraduate/funding

Information on the School's funding opportunities is available via:

www.manchester.ac.uk/socialsciences/postgraduate/index.html

To be considered for funding, you must apply for a place on the PhD programme and return the School of Social Sciences funding application form by 1 March. The form is available via:

www.manchester.ac.uk/socialsciences/postgraduate/research/funding

facilities and support



As you'd expect from a world-class institution, The University of Manchester provides a wide range of comprehensive support services and facilities. Here is a brief outline – use the web links to find out more.

Academic Advisory Service

This confidential information and advice service is for anyone with academic worries. Our advisers have excellent knowledge and resources to help you make informed decisions to manage your situation.

tel +44 (0)161 275 3033

email caas@manchester.ac.uk

www.manchester.ac.uk/academicadvisoryservice

Accommodation

With more than 9,200 rooms, The University of Manchester has more university-owned accommodation than any other university in the country, almost all of which is within two miles of campus. A number of residences are reserved exclusively for postgraduates; in others, every effort is made to room graduate students together.

tel +44 (0)161 275 2888

fax +44 (0)161 275 3213

www.manchester.ac.uk/accommodation

In addition to the University's halls of residence, Manchester has a sizeable stock of private accommodation for rent.

tel +44 (0)161 275 7680

fax +44 (0)161 275 7684

email manchesterstudenthomes@manchester.ac.uk

www.manchesterstudenthomes.com

Careers Service

A team of careers professionals who specialise in working with postgraduates offer you personal support, training and development opportunities and extensive careers information. Our Careers Service has

been voted the best in the UK by employers for five consecutive years; recognition for the work we do to ensure leading employers get the chance to meet and recruit our students.

www.manchester.ac.uk/careers

Childcare

There are two nurseries close to campus for children aged six months to five years.

tel +44 (0)161 272 7121 (Dryden Street Nursery)

tel +44 (0)161 200 4979 (Echoes Nursery)

www.manchester.ac.uk/studentexperience/childcare

Counselling

Our Counselling Service can help you with any personal problems that may affect your work or wellbeing. All help is free and entirely confidential.

tel +44 (0)161 275 2864

email counsel.service@manchester.ac.uk

www.manchester.ac.uk/counselling

Cultural facilities

Some of the city's finest cultural venues are right here on the University campus.

Manchester Museum

www.manchester.ac.uk/museum

Whitworth Art Gallery

www.manchester.ac.uk/whitworth

Contact Theatre

www.contact-theatre.org

Jodrell Bank Observatory and Visitor Centre

www.manchester.ac.uk/jodrellbank

'Shopping, bars and the epic architecture of the city's industrial past and vibrant present are all a short walk away...'

The Guardian University Guide



www.manchester.ac.uk

Disability Support Office (DSO)

If you have additional needs arising from a medical condition, a physical or sensory disability, or a specific learning disability, you are strongly encouraged to contact the University's Disability Support Office to discuss your needs, any arrangements that may be necessary and the extent to which appropriate support is available.

tel +44 (0)161 275 7512

fax +44 (0)161 275 7018

minicom +44 (0)161 275 2794

email dso@manchester.ac.uk

www.manchester.ac.uk/dso

International postgraduates

Around 6,000 students from outside the UK are welcomed into postgraduate study at the University every year, from more than 150 countries. A range of facilities and services are available to make your application and move to Manchester go smoothly, including an in-depth arrival guide, a free airport collection service and an orientation programme.

www.manchester.ac.uk/international

IT services

IT Services provides staff and students with extensive computing facilities, as well as a variety of services around the campus for postgraduate research staff.

www.manchester.ac.uk/itservices

Library and information services

The John Rylands University Library is one of the best-resourced academic libraries in the UK and is widely recognised as one of the world's great research libraries.

www.manchester.ac.uk/library

Religious support

There are two chaplaincy centres for the major Christian churches: St Peter's House, for the Anglican, Baptist, Methodist and United Reformed Churches; and Avila House for the Roman Catholic Chaplaincy. Hillel House provides facilities for Jewish worship. There are prayer facilities on campus for Muslim students and student societies for many religions.

Sport

We have an active Athletic Union, a diverse 'Campus Sport' programme and a huge variety of health, fitness and wellbeing classes, as well as volunteering and scholarship opportunities.

www.manchester.ac.uk/sport

Student Services Centre (SSC)

The SSC is where you complete all your administrative transactions with the University – eg issues relating to tuition fees, loans, swipe cards, scholarships and awards, examinations and graduation.

tel +44 (0)161 275 5000

email ssc@manchester.ac.uk

www.manchester.ac.uk/ssc

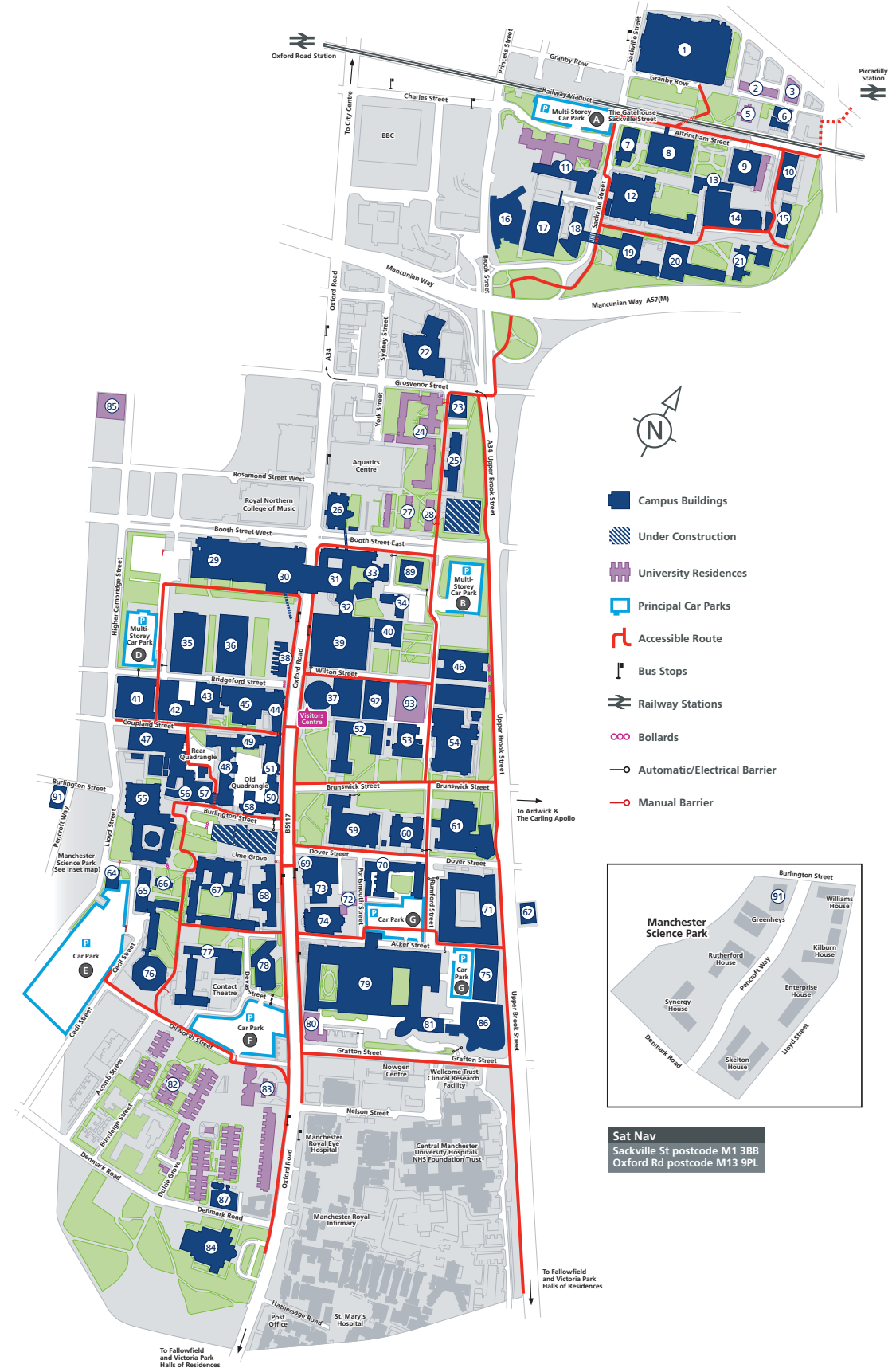
Students' Union

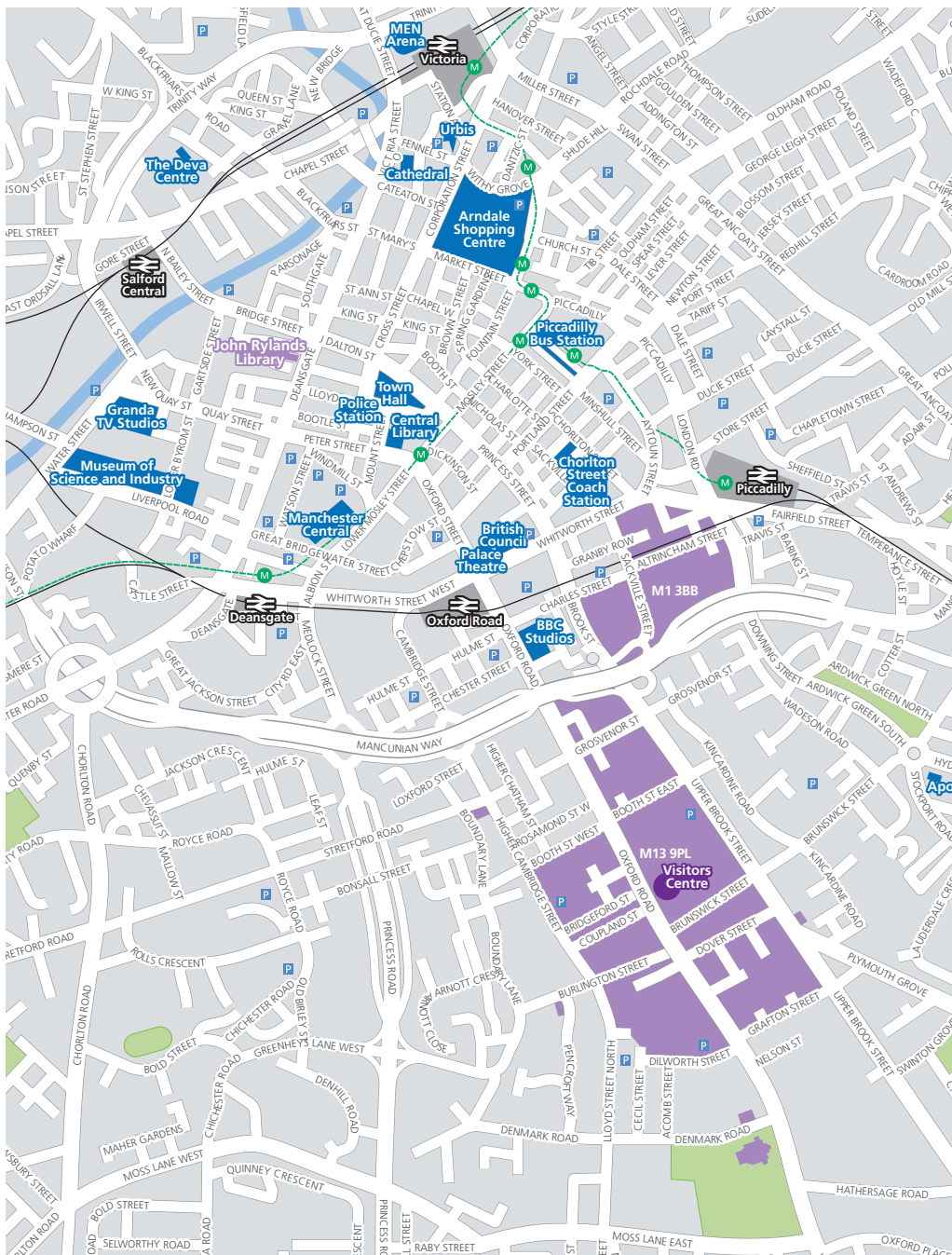
The University of Manchester Students' Union (UMSU) is the largest Students' Union in Europe, offering everything from live bands to student representation. UMSU has some of the largest and most active student societies in the country and complements the University's overall provision of support and welfare services.

www.umsu.manchester.ac.uk

campus map

- | | |
|--|---|
| 1 Sackville Street Building | 45 Rutherford Building |
| 2 Lambert Hall | 46 Alan Turing Building |
| 3 Fairfield Hall | 47 Coupland Building 3 |
| 5 Chandos Hall | 48 John Owens Building |
| 6 Echoes Day Nursery | 49 Beyer Building |
| 7 Paper Science Building | 50 Whitworth Hall |
| 8 Renold Building | 51 Whitworth Building |
| 9 Barnes Wallis Building / Students' Union / Wright Robinson Hall | 52 Williamson Building |
| 10 Vision Centre / Moffat Building | 53 Roscoe Building |
| 11 The Manchester Conference Centre and Weston Hall | 54 Schuster Building |
| 12 Pariser Building | 55 The John Rylands Library |
| 13 Staff House Sackville Street | 56 Schunck Building / Burlington Rooms |
| 14 The Mill | 57 Student Services Centre |
| 15 Morton Laboratory | 58 Christie Building |
| 16 Manchester Interdisciplinary Biocentre - John Garside Building | 59 Simon Building |
| 17 George Begg Building | 60 Zochonis Building |
| 18 Faraday Tower | 61 Chemistry Building |
| 19 Faraday Building | 62 Dryden Street Nursery |
| 20 Ferranti Building | 64 Environmental Services Unit |
| 21 Maths and Social Sciences Building | 65 Mansfield Cooper Building |
| 22 Sugden Sports Centre | 66 Stephen Joseph Studio |
| 23 Oddfellows Hall | 67 Samuel Alexander Building |
| 24 Grosvenor Halls of Residences | 68 Students' Union Oxford Road (also at number 9) |
| 25 Materials Science Centre | 69 William Kay House |
| 26 Manchester Business School East | 70 Dover Street Building |
| 27 Bowden Court | 71 Michael Smith Building |
| 28 Ronson Hall | 72 Vaughan House |
| 29 Manchester Business School West | 73 Avila House RC Chaplaincy |
| 30 Precinct Shopping Centre Harold Hankins Building Devonshire House | 74 Holy Name Church |
| 31 Crawford House | 75 AV Hill Building |
| 32 St Peters House/Chaplaincy | 76 AQA |
| 33 Crawford House Lecture Theatres | 77 Ellen Wilkinson Building |
| 34 Prospect House | 78 The Academy |
| 35 Humanities Bridgeford Street | 79 Stopford Building |
| 36 Arthur Lewis Building | 80 Horniman House |
| 37 University Place | 81 The Manchester Incubator Building |
| 38 Waterloo Place | 82 Whitworth Park Halls of Residence |
| 39 Kilburn Building | 83 Grove House |
| 40 Information Technology Building | 84 The Whitworth Art Gallery |
| 41 Dental School and Hospital | 85 Opal Hall |
| 42 Martin Harris Centre for Music and Drama | 86 Core Technology Facility |
| 43 Coupland Building 1 | 87 Denmark Building |
| 44 The Manchester Museum | 89 Lamb Building |
| | 91 McDougall Centre |
| | 92 Jean McFarlane Building (formerly 37b) |
| | 93 George Kenyon Building and Hall of Residence and PC cluster (formerly 37a) |





how to apply contact details

Our preferred method of application for all postgraduate programmes is via our online application form:

www.manchester.ac.uk/pgapplication

If you are unable to apply online and require a printed application form, contact the Postgraduate Admissions Office:

tel +44 (0)161 275 4740
 email pg-admissions@manchester.ac.uk
 (remember to include your postal address)

address

Social Anthropology
 School of Social Sciences
 The University of Manchester
 Manchester M13 9PL
 United Kingdom

tel +44 (0)161 275 4471

fax +44 (0)161 275 2450

email pg-soss@manchester.ac.uk

website www.manchester.ac.uk/socialsciences/socialanthropology

From Piccadilly Gardens Bus Station

(a short walk from Piccadilly Rail Station), take buses 40, 41, 42, 43, 44, 45, 46, 142, 143, 149, 249, 157, W2, or 11. Ask for The University of Manchester Precinct Centre.

From Victoria Rail Station

Either take the Metrolink tram, or walk to Piccadilly Gardens Bus Station (not the Rail Station) and follow the directions above.

Parking

Please note that parking near the School is available in several car parks on campus and in a new multi-storey car park.

Disclaimer

This brochure is prepared well in advance of the academic year to which it relates. Consequently, details of programmes may vary with staff changes. The University therefore reserves the right to make such alterations to programmes as are found to be necessary. If the University makes an offer of a place, it is essential that you are aware of the current terms on which the offer is based. If you are in any doubt, please feel free to ask for confirmation of the precise position for the year in question, before you accept the offer.

Social Anthropology
School of Social Sciences
The University of Manchester
Manchester
M13 9PL
United Kingdom

tel +44 (0)161 275 4471
email pg-soss@manchester.ac.uk
www.manchester.ac.uk/socialsciences/socialanthropology

Royal Charter Number RC000797
J2697 11.09

